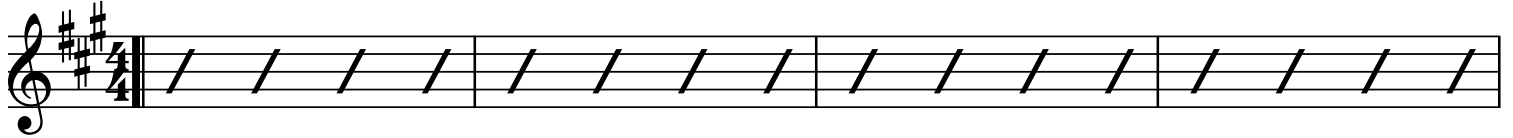


Ode to Joy 2

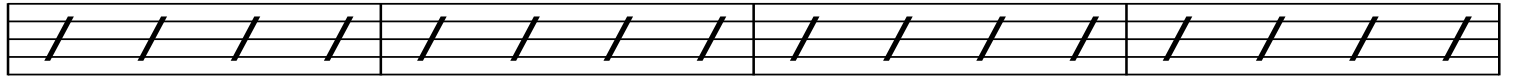
Sax alto en Mib

Musique de L.v. Beethoven
Arrangements de Thierry Chauve

A B_M A B_M A E⁷ A E⁷



A E⁷ A B_M A B⁷ E A



E⁷ A E⁷ A E⁷ A⁷



D E⁷ A E⁷ A



13b

B⁷ A E⁷ A B_M⁷ E⁷ A



E⁷ C[#]_M B_M⁷ A E⁷ A



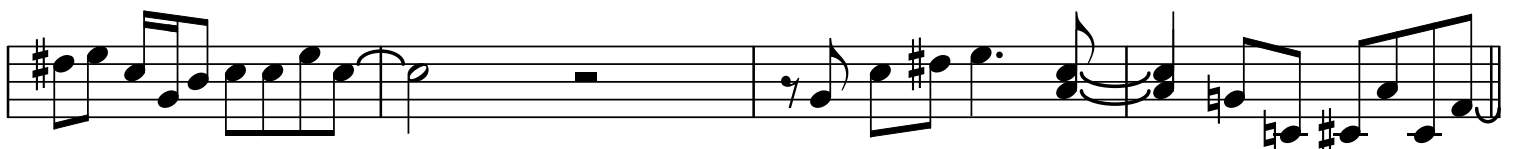
A B_M A B_M A E⁷ A E⁷



A E⁷ A B_M A B⁷ E A



E⁷ A E⁷ A E⁷ A⁷



A7 D E7 A E7 A

37b

B7 A E7 A Bm7 E7 A

E7 C#m Bm7 A E7 A

A Bm A Bm A E7 A E7

A E7 A Bm A B7 E A

E7 A E7 A E7 A7

D E7 A E7 A

61b

B7 A E7 A Bm7 E7 A

E7 C#m Bm7 A E7 A

Detailed description: This is a guitar score for a piece in A major. The score consists of ten staves of music. The first staff begins with a treble clef and a key signature of two sharps (F# and C#). The music is written in a style that combines standard notation with guitar-specific techniques like barre (indicated by '37b') and natural harmonics (indicated by a 'n' over a note). Chords are indicated by letters above the staff: A7, D, E7, A, E7, A, B7, A, E7, A, Bm7, E7, A, E7, C#m, Bm7, A, E7, A, A, Bm, A, Bm, A, E7, A, E7, A, E7, A, Bm, A, B7, E, A, E7, A, E7, A, E7, A7, D, E7, A, E7, A, B7, A, E7, A, Bm7, E7, A, E7, C#m, Bm7, A, E7, A. The score includes various rhythmic values such as eighth notes, quarter notes, and half notes, along with rests and dynamic markings like 'y' for natural harmonics. The piece concludes with a double bar line.