

## Membra Jesu nostri

Violino 1  
No.1 - Ad pedes

D.Buxtehude

## Sonata



## Tutti



## Aria Soprano 1mo

## Ritornello



## Soprano 2do

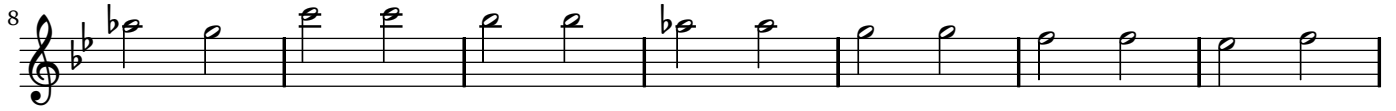
## Ritornello





Violino 1  
No.2 - Ad Genua

Sonata in tremulo



Tutti



Aria Tenor

Ritornello



## Violino 1

4  
89

Alto Ritornello  
93 10

106

à 3 do Soprani è Basso Ritornello  
110 10

123

Tutti  
127 10

143

149

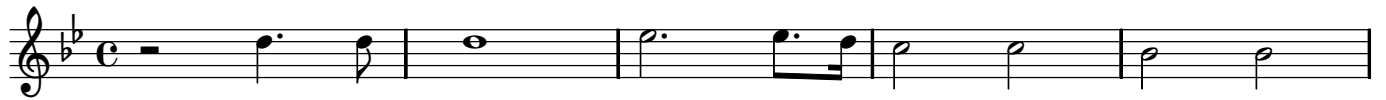
155 2

163

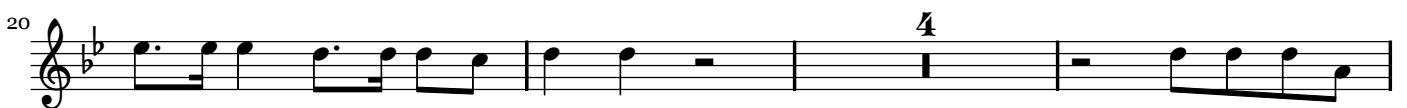
169

Violino 1  
No.3 - Ad Manus

Sonata



Tutti



Aria Soprano 1mo Ritornello



6

Violino 1

Soprano 2do

Ritornello

97 **34**

138

146

Ritornello

à 3 Alto, Tenor e Basso

154 **34**

195

203

Tutti

211 **3**

217 **4**

224

227 **4**

233



8

Violino 1

à3 Alto Tenor Basso

Ritornello

102 **13**

122

Soprano 2do

Ritornello

129 **13**

149

Tutti

156 **3**

165

171 **7**

183

189

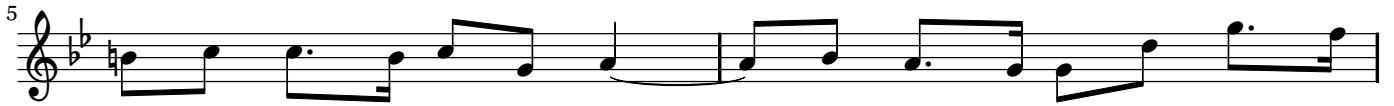
195 **5**

205 **5**



Violino 1  
No.5 - Ad Pectus

Sonata



Voci Alto, Tenore e Basso



Aria Alto

Ritornello



Tenor

Ritornello



10 Violino 1

112

Basso con Stromenti

117

120

122

125

128

Ritornello

130

133

135

137

Voci Alto, Tenore è Basso

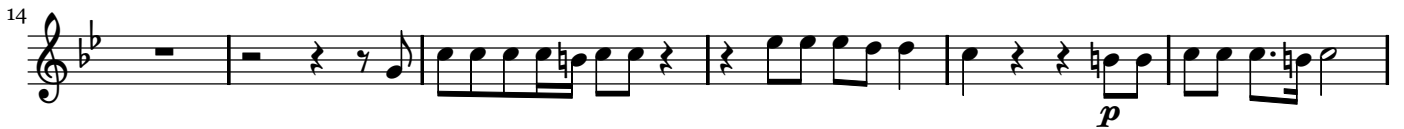
140

Violino 1  
No.6 - Ad Cor - tacet  
No.7 - Ad Faciem

Sonata



Tutti



Alto, Tenore è Basso con Violini



12

Violino 1

Aria Alto

Ritornello

74 **19**

97

Tutti

102

107

112

118

Amen

124 **7**

135 **3**

142 **3** **5**

155 **6**

166

Violino2  
**Membra Jesu nostri**  
 Violino2  
 No.1 - Ad pedes

D.Buxtehude

Sonata



Tutti



Aria Soprano 1mo

Ritornello

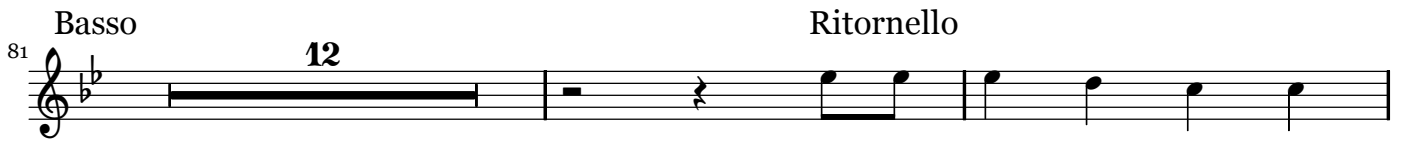


Soprano 2do

Ritornello



## 14 Violino2



Violino2  
No.2 - Ad Genua

Sonata in tremulo



Tutti



Aria Tenor

Ritornello



## 16 Violino2



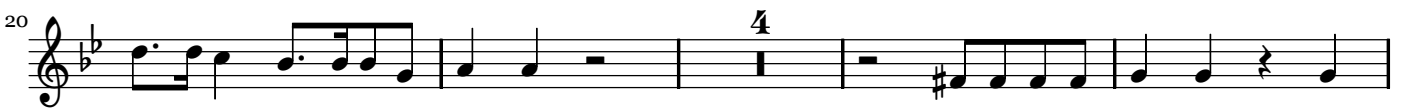


Violino2  
No.3 - Ad Manus

Sonata



Tutti



Aria Soprano 1mo

Ritornello



18

Violino2

Soprano 2do

Ritornello



Ritornello

à 3 Alto, Tenor è Basso



Tutti



Violino2  
No.4 - Ad Latus

Sonata



Tutti



Aria Soprano 1mo Ritornello



20 Violino2



à3 Alto Tenor Basso

Ritornello

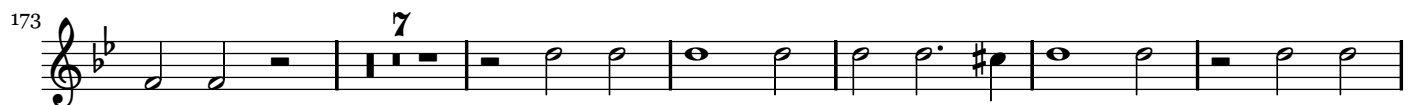


Soprano 2do

Ritornello



Tutti



Violino2  
No.5 - Ad Pectus

Sonata



Voci Alto, Tenore è Basso



Aria Alto



Ritornello



Tenor



Ritornello



Violino2

22  
114

Basso con Stromenti

117

120

123

126

129

Ritornello

131

133

135

137

Voci Alto, Tenore è Basso

140

Violino2  
No.6 - Ad Cor - tacet  
No.7 - Ad Faciem

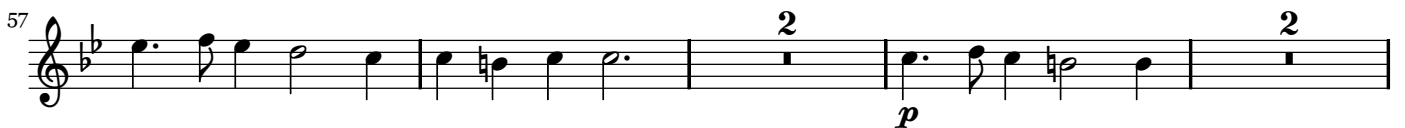
Sonata



Tutti



Alto, Tenore è Basso con Violini



24

Violino2

Aria Alto

Ritornello

74 **19**

97

Tutti

102

108

113

118

Amen

124 **7** **3**

138 **3**

145 **5**

155 **6**

166



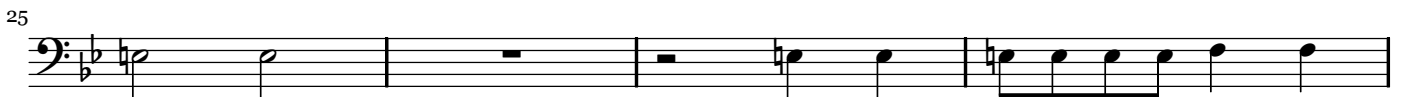
Violon  
Membra Jesu nostri  
Violon  
No.1 - Ad pedes

D.Buxtehude

## Sonata



## Tutti



## Aria Soprano 1mo

## Ritornello



## Soprano 2do

## Ritornello



26

Violon

Basso

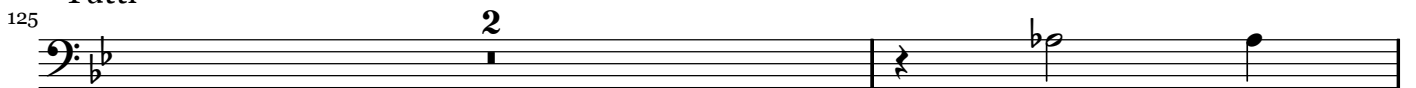
Ritornello



Tutti



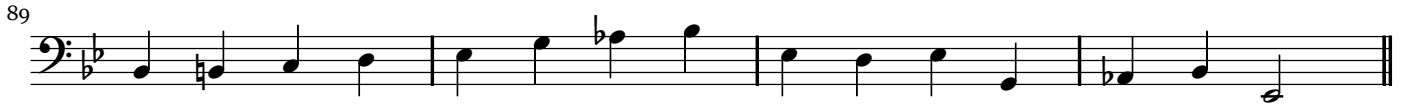
Tutti





28

Violon



Alto

Ritornello



106



à 3 do Soprani è Basso

Ritornello



123



Tutti



142



150



155



162



168



Violon  
No.3 - Ad Manus

Sonata



Tutti



Aria Soprano 1mo Ritornello



30

Violon

Soprano 2do

Ritornello

97 **34**

138

146

Ritornello

à 3 Alto, Tenor è Basso

154 **34**

195

203

Tutti

211 **3**

217 **4**

223

226 **4**

233

Violon  
No.4 - Ad Latus

Sonata



Tutti



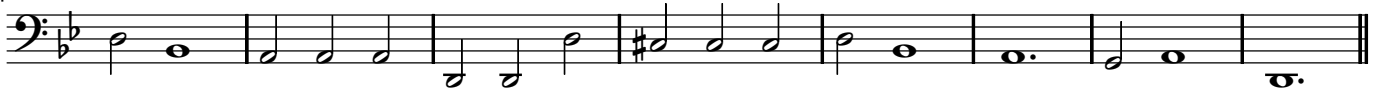
Aria Soprano 1mo Ritornello



32

Violon

94



à3 Alto Tenor Basso

Ritornello

102

13



121



Soprano 2do

Ritornello

129

13



148



Tutti

156

3



166

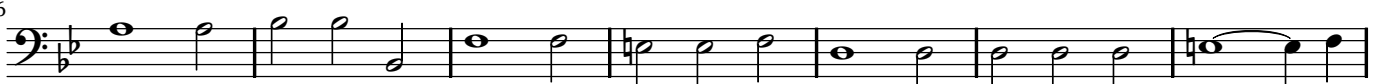


173

7



186



193

5



204

5



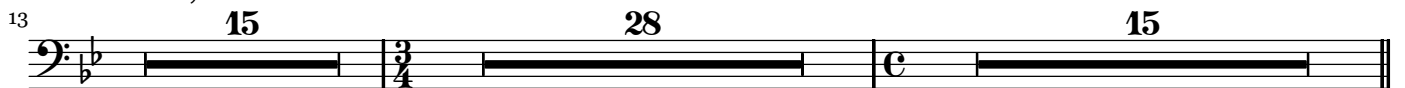


Violon  
No.5 - Ad Pectus

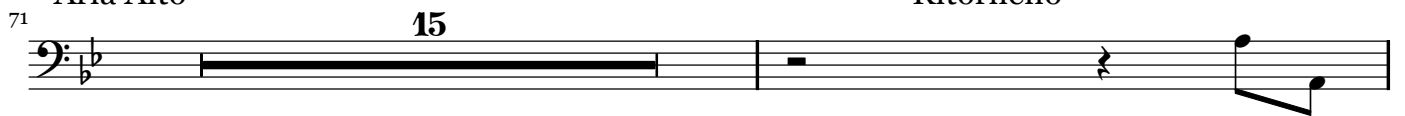
Sonata



Voci Alto, Tenore è Basso



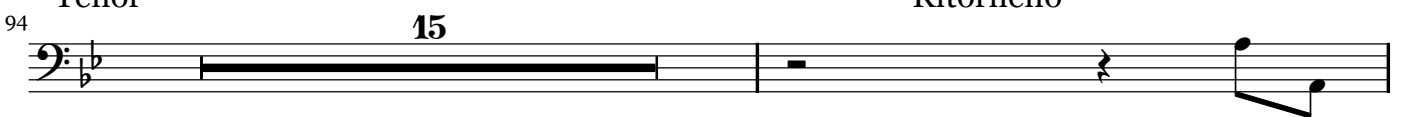
Aria Alto



Ritornello



Tenor



Ritornello



34

Violon

112

114

Basso con Stromenti

117

120

123

126

129

Ritornello

132

134

137

Voci Alto, Tenore è Basso

140

Violon

## No.6 - Ad Cor - tacet

## No.7 - Ad Faciem

## Sonata



36

Violon

Aria Alto

Ritornello

74 **19**

97

Tutti

102

108

113

118

Amen

124 **7** **3**

138 **3**

145 **5**

155 **6**

166

Viola (da gamba) 1  
**Membra Jesu nostri**  
 Viola (da gamba) 1  
 No.6 - Ad Cor

D.Buxtehude

adagio

allegro



allegro



allegro



adagio



Ritornello

Doi Soprani è Basso



Ritornello

Aria Soprano I



## Ritornello

## Aria Soprano Secondo

86

## Aria Basso

99

103

107

## Ritornello

112

116

## Doi Soprani è Basso

120

128

132

137

142

Viola (da gamba) 2  
**Membra Jesu nostri**  
 Viola (da gamba) 2  
 No.6 - Ad Cor

D.Buxtehude

adagio

allegro



allegro



allegro



adagio



Ritornello

Doi Soprani è Basso



Aria Soprano I

Ritornello



40

Viola (da gamba) 2

## Aria Soprano Secondo Ritornello

86 8

97

## Aria Basso

99

103

107

## Ritornello

113

116 *p*

## Doi Soprani è Basso

120 3

130

136

141 *p*



Viola (da gamba) 3  
**Membra Jesu nostri**  
 Viola (da gamba) 3  
 No.6 - Ad Cor

D.Buxtehude

adagio

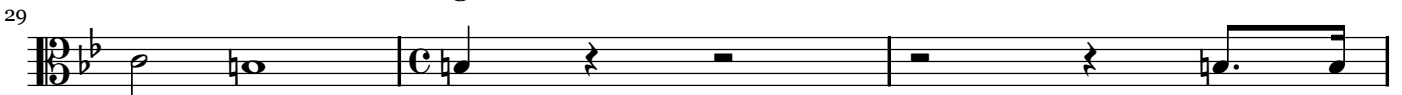
allegro



allegro



allegro



adagio



Ritornello

Doi Soprani è Basso



42

Viola (da gamba) 3

67

Ritornello

Aria Soprano I

73

9

Ritornello

Aria Soprano Secondo

86

8

Aria Basso

Ritornello

99

13

116

*p*

Doi Soprani è Basso

120

3

127

131

135

139

143

*p*

Viola (da gamba) 4  
**Membra Jesu nostri**  
 Viola (da gamba) 4  
 No.6 - Ad Cor

D.Buxtehude

adagio

allegro



allegro



allegro



adagio



Ritornello

Doi Soprani è Basso



Aria Soprano I

Ritornello



44

Viola (da gamba) 4



## Aria Soprano Secondo Ritornello



## Aria Basso

## Ritornello



## Doi Soprani è Basso



Viola (da gamba) 5  
**Membra Jesu nostri**  
 Viola (da gamba) 5  
 No.6 - Ad Cor

D.Buxtehude

adagio

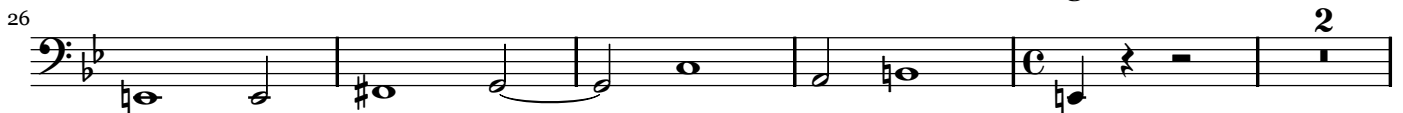
allegro



allegro



allegro



adagio



Ritornello

Doi Soprani è Basso



Ritornello

Aria Soprano I



Ritornello

Aria Soprano Secondo



46

Viola (da gamba) 5

## Aria Basso

99



103



107



## Ritornello

112



116



## Doi Soprani è Basso

120



127



131



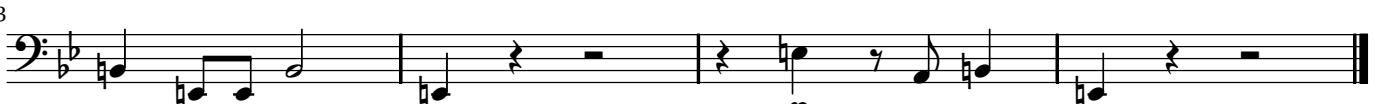
135



139



143



Continuo  
**Membra Jesu nostri**

Continuo  
**No.1 - Ad pedes**

D.Buxtehude

**Sonata**

6 7  $\text{\textcircled{c}}$  9 8  $\text{\textcircled{c}}$  7 6 # 6  $\text{\textcircled{c}}$  6

9  $\text{\textcircled{c}}$  5 5 6 7 6 6 4—5 #  $\text{\textcircled{c}}$  6 6 4 5 3 6 5 7 6 6 4—5 #

**Tutti**

14  $\text{\textcircled{c}}$   $\text{\textcircled{c}}$  6 $\text{\textcircled{b}}$  6 $\text{\textcircled{b}}$   $\text{\textcircled{c}}$   $\text{\textcircled{c}}$  7  $\text{\textcircled{c}}$

21  $\text{\textcircled{c}}$  7 6 # 6 6 6 6 5 $\text{\textcircled{b}}$  6 5 $\text{\textcircled{b}}$  6 5 $\text{\textcircled{b}}$

28 6 5 $\text{\textcircled{b}}$   $\text{\textcircled{c}}$   $\text{\textcircled{c}}$  6 5 $\text{\textcircled{b}}$  6 4 3 $\text{\textcircled{b}}$  4 5 7 6 # 5 4 # #

**Aria Soprano 1mo**

35 6 6 4 5 # 6 5 6 4 5 5 4 # 4 2 $\text{\textcircled{b}}$   $\text{\textcircled{c}}$  6 5 4 3 6  $\text{\textcircled{c}}$

40 7 6 $\text{\textcircled{b}}$  5 $\text{\textcircled{b}}$  7 6 5 $\text{\textcircled{b}}$  6 7 # 7 5 4 # 7 6 5 $\text{\textcircled{b}}$   $\text{\textcircled{c}}$  7 # 5 $\text{\textcircled{b}}$  6

**Ritornello**

46 7 # 6 7 5 4 # 6 5 6 5 6 5 7 6 4 # 6 6

52 6 6 6 6 6 4+ 4+ 5  $\text{\textcircled{c}}$   $\text{\textcircled{c}}$  6  $\text{\textcircled{c}}$  5 4 #

**Soprano 2do**

58 6 6 4 5 # 6 5 6 4 5 5 4 # 4 2 $\text{\textcircled{b}}$   $\text{\textcircled{c}}$  6 5 4 3 6  $\text{\textcircled{c}}$  7 6 $\text{\textcircled{b}}$  5 $\text{\textcircled{b}}$

64 7 6 5 $\text{\textcircled{b}}$  6 7 # 7 5 4 # 7 6 5 $\text{\textcircled{b}}$   $\text{\textcircled{c}}$  # 5 $\text{\textcircled{b}}$  6 7 # 6





Continuo  
No.2 - Ad Genua

Sonata in tremulo

11

20

Tutti

29

38

48

58

68

Aria Tenor

76

Ritornello

82

87

50 Continuo

Alto

93

Ritornello

100

105

à 3 do Soprani è Basso

110

Ritornello

116

122

Tutti

127

136

146

156

166

Continuo  
No.3 - Ad Manus

Sonata

Tutti

Aria Soprano 1mo

Ritornello

Soprano 2do

Continuo

109 # 6 5<sup>b</sup> 6 6 5 4 3 6 5 6 6 5 4 3

120 6 5 6 # b 6 5 5 4 # 6 # 6 6 5 #

Ritornello

131 6 6 7 6 # 5 7 5 4 # 6 7 6 6 7 6 6 7 6

142 # 8 b 7 7 3 7 6 7 6 6 b 6 5 6 # 5 6 6 7 5 4 #

à3 Alto, Tenor è Basso

154 6 5 2 6 7 6 6 7 6 6 4 6 6 7 6 5 6 6 6 7 b 7 6

165 7 6 # 6 5 6 4 3 6 6 6 4 3 6 5<sup>b</sup>

177 5 6 6 7 6 6 # 6 6 6 4 # 6 6 7 4 #

Ritornello

188 6 7 6 # 7 5 4 # 7 6 7 7 6 7 6

199 # 7 b 7 7 6 7 7 6 b 6 b # 5 6 6 7 5 4 #

Tutti

211 6 5 6 6<sup>b</sup> 5<sup>b</sup> 6 # 6 3 7 5 4 # #

224 6 5<sup>b</sup> b b b 7 6 6 6<sup>5</sup> 4<sup>3</sup> 10 4<sup>b</sup> 9 9 8 6 9 7 8 7 6 # 4 6<sup>5</sup> 4 #



Aria Soprano 1mo

75

81

87

Ritornello

94

à3 Alto Tenor Basso

102

107

113

Ritornello

120

Soprano 2do

129

134

139

Ritornello

Continuo

144

6 7 # 6 5 5 6 7 6 5 6 #

Musical staff for measure 144 in bass clef with a key signature of one flat. The staff contains six measures of music. Fingerings are indicated above the notes: 6, 7, #, 6, 5, 5, 6, 7, 6, 5, 6, #.

150

7 6 6 7 # 4 7 4 #

Musical staff for measure 150 in bass clef with a key signature of one flat. The staff contains six measures of music. Fingerings are indicated above the notes: 7, 6, 6, 7, #, 4, 7, 4, #.

Tutti

156

6 4 6 5 4 # 7 6 6 5 4 #

Musical staff for measure 156 in bass clef with a key signature of one flat. The staff contains six measures of music. Fingerings are indicated above the notes: 6, 4, 6, 5, 4, #, 7, 6, 6, 5, 4, #.

163

6 4 5 3 6 9 8 5 6

Musical staff for measure 163 in bass clef with a key signature of one flat. The staff contains six measures of music. Fingerings are indicated above the notes: 6, 4, 5, 3, 6, 9, 8, 5, 6.

169

7 6 6 6 4 5 3 5 #

Musical staff for measure 169 in bass clef with a key signature of one flat. The staff contains six measures of music. Fingerings are indicated above the notes: 7, 6, 6, 6, 4, 5, 3, 5, #.

175

6 # # 6 # 6 6

Musical staff for measure 175 in bass clef with a key signature of one flat. The staff contains six measures of music. Fingerings are indicated above the notes: 6, #, #, 6, #, 6, 6.

182

5 6 6 5 4 # 6 4 5 3 6 9

Musical staff for measure 182 in bass clef with a key signature of one flat. The staff contains six measures of music. Fingerings are indicated above the notes: 5, 6, 6, 5, 4, #, 6, 4, 5, 3, 6, 9.

188

6 7 7 6 6 6 6 4 # 6

Musical staff for measure 188 in bass clef with a key signature of one flat. The staff contains six measures of music. Fingerings are indicated above the notes: 6, 7, 7, 6, 6, 6, 6, 4, #, 6.

195

6 6 6 6 6 6 5 #

Musical staff for measure 195 in bass clef with a key signature of one flat. The staff contains six measures of music. Fingerings are indicated above the notes: 6, 6, 6, 6, 6, 6, 5, #.

202

7 6 6 5 4 # 6 6 6 5 #

Musical staff for measure 202 in bass clef with a key signature of one flat. The staff contains six measures of music. Fingerings are indicated above the notes: 7, 6, 6, 5, 4, #, 6, 6, 6, 5, #.

208

6 6 4 7 5 4 # 6 6 5 4 #

Musical staff for measure 208 in bass clef with a key signature of one flat. The staff contains six measures of music. Fingerings are indicated above the notes: 6, 6, 4, 7, 5, 4, #, 6, 6, 5, 4, #.

Continuo  
No.5 - Ad Pectus

Sonata

Voci Alto, Tenore è Basso

Aria Alto



## Continuo

75

80

## Ritornello

84

89

## Tenor

94

98

103

## Ritornello

107

112

## Basso con Stromenti

117

121

58

Continuo

126

130

Ritornello

135

Voci Alto, Tenore e Basso

140

145

150

155

165

174

183

191

Continuo  
No.6 - Ad Cor

adagio

allegro

6 6

6 6 6 7 6 7 6 4 # 7 6

allegro

11 6 5 4 #

17 6 6 4+ 6 6 7 # 5 6 5 6 5b 7 6

allegro

25 5 4 # 5 6 5b 7 6 5 4 #

adagio

32 6 6 7 6 7 6 4 # 7 6 # 6 9 8 8 6 5 6 6 5 4 #

Doi Soprani è Basso

39 6 5 5 5 5 5 b b b 6 6 2 5 b

Ritornello

52 5 6 6 5 5 6 5b 7 6 4 9 8 6 7 6 5 # 4 4 #

63 4 6 6 4+ 6 7 5 4 # b b 6 4 6 6 4+ 6 7 5 4 #

Aria Soprano I

73 6 5 6 6 6 6 6 5 4+ 6 5 4 # 5 4 # 6

78 7 6 6 6 5b 6 5 6 6 4 # 5 6 6 4 #

60 Continuo

Ritornello

82

Aria Soprano Secondo

86

90

Ritornello

95

Aria Basso

99

104

Ritornello

110

115

Doi Soprani e Basso

120

131

140

Continuo  
No.7 - Ad Faciem

Sonata

Musical notation for the Sonata section, measures 1-13. The notation is in bass clef with a key signature of two flats (B-flat and E-flat) and a common time signature (C). Fingerings are indicated by numbers 1-5 above the notes. Measure numbers 6, 10, and 14 are placed at the beginning of their respective staves.

Tutti

Musical notation for the Tutti section, measures 14-37. The notation is in bass clef with a key signature of two flats and a common time signature. Fingerings are indicated by numbers 1-7 above the notes. A dynamic marking of *p* (piano) is present in measure 17. Measure numbers 14, 20, 26, and 32 are placed at the beginning of their respective staves.

Alto, Tenore e Basso con Violini

Musical notation for the Alto, Tenore e Basso con Violini section, measures 38-57. The notation is in bass clef with a key signature of two flats and a 6/4 time signature. Fingerings are indicated by numbers 1-10 above the notes. Dynamic markings of *p* (piano) are present in measures 56 and 57. Measure numbers 38, 44, 50, and 56 are placed at the beginning of their respective staves.

62

Continuo

63 *p* *f*

69

Aria Alto

74

80 *p*

86

Ritornello

92

97

Tutti

102

107

113

118 *p*

