

Lobet den Herren alle, die ihn ehren

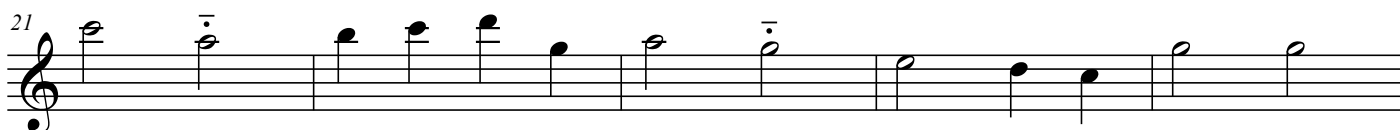
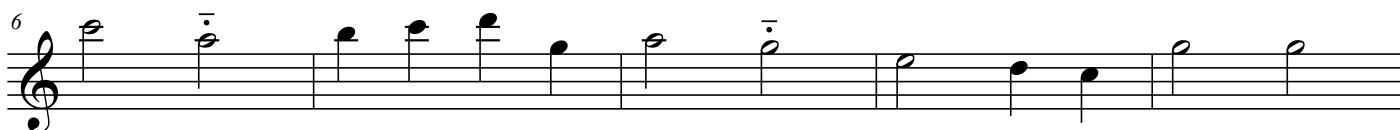
(Version 6)

Flute

Johann Crüger (1598-1662) (Arr.: Ralf Behrens)

www.rabe-musik-und-mehr.de - ©2016 RaBe

$\text{♩} = \text{c. } 64$



Lobet den Herren alle, die ihn ehren
 www.ra-be-musik-und-mehr.de - ©2016 RaBe

36

Measures 36-40: Treble clef, G4 quarter note, A4 quarter note with a bar line above it, B4 quarter note, C5 quarter note, B4 quarter note, A4 quarter note, G4 quarter note, F4 quarter note with a bar line above it, E4 quarter note, D4 quarter note, C4 quarter note, B3 quarter note, A3 quarter note.

41

Measures 41-45: Treble clef, G4 quarter note, A4 quarter note, B4 quarter note, C5 quarter note, B4 quarter note, A4 quarter note, G4 quarter note with a sharp sign (#) and a bar line above it, F4 quarter note with a bar line above it, E4 quarter note, D4 quarter note, C4 quarter note, B3 quarter note, A3 quarter note. Measure 45 ends with a double bar line, a 4/4 time signature, and a repeat sign.

46

Measures 46-50: Treble clef, 2/2 time signature, G4 quarter note, A4 quarter note, B4 quarter note, C5 quarter note, B4 quarter note, A4 quarter note, G4 quarter note, F4 quarter note with a bar line above it, E4 quarter note, D4 quarter note, C4 quarter note, B3 quarter note, A3 quarter note.

51

Measures 51-55: Treble clef, G4 quarter note, A4 quarter note with a bar line above it, B4 quarter note, C5 quarter note, B4 quarter note, A4 quarter note, G4 quarter note, F4 quarter note with a bar line above it, E4 quarter note, D4 quarter note, C4 quarter note, B3 quarter note, A3 quarter note.

56

Measures 56-60: Treble clef, G4 quarter note, A4 quarter note, B4 quarter note, C5 quarter note, B4 quarter note, A4 quarter note, G4 quarter note with a sharp sign (#) and a bar line above it, F4 quarter note with a bar line above it, E4 quarter note, D4 quarter note, C4 quarter note, B3 quarter note, A3 quarter note. Measure 60 ends with a double bar line, a 4/4 time signature, and a repeat sign.

61

Measures 61-65: Treble clef, 2/2 time signature, G4 quarter note, A4 quarter note, B4 quarter note, C5 quarter note, B4 quarter note, A4 quarter note, G4 quarter note, F4 quarter note with a bar line above it, E4 quarter note, D4 quarter note, C4 quarter note, B3 quarter note, A3 quarter note.

66

Measures 66-70: Treble clef, G4 quarter note, A4 quarter note with a bar line above it, B4 quarter note, C5 quarter note, B4 quarter note, A4 quarter note, G4 quarter note, F4 quarter note with a bar line above it, E4 quarter note, D4 quarter note, C4 quarter note, B3 quarter note, A3 quarter note.

71

Measures 71-75: Treble clef, G4 quarter note, A4 quarter note, B4 quarter note, C5 quarter note, B4 quarter note, A4 quarter note, G4 quarter note with a sharp sign (#) and a bar line above it, F4 quarter note with a bar line above it, E4 quarter note, D4 quarter note, C4 quarter note, B3 quarter note, A3 quarter note. Measure 75 ends with a double bar line and a fermata over the final note.