

Violin I

4. Bal dâmbovițean

Ioan Dobrinescu

Introduction ♩ = 102

f *mp* rit.

5 **A** Tempo di Polka ♩ = 92

13 un poco accelerando ♩ = 102

21 **B** Più mosso ♩ = 112

29

34

3

40 **C** *pizz.* Un poco più mosso ♩ = 120

48

56 **D**

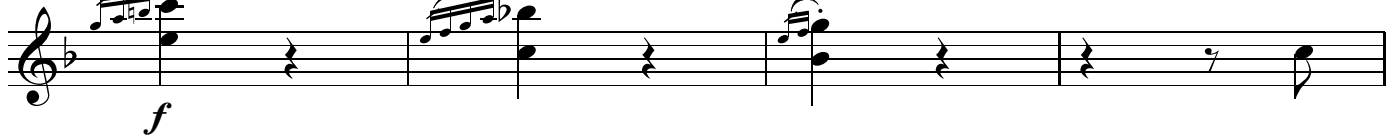
64

72 **E** *arco*

83



90

94 **F** A tempo ♩ = 112

102



108

114

f

G Quadrille, Allegretto ♩ = 102

120 *arco*

127

f *poco rit..*

137 **I** A tempo

145 **J**

mf *mp*

161 **K**

168

f *Vivo ♩ = 132*

172 **L** Street organ, Tempo di vals ♩ = 66

f

7

Detailed description: This staff contains measures 172 to 181. It begins with a treble clef and a key signature of two sharps (F# and C#). The music starts with a forte (*f*) dynamic. There are several slurs and accents. A box labeled 'L' is placed above the staff. A tempo marking 'Street organ, Tempo di vals' and a metronome marking '♩ = 66' are present. A fermata is placed over the final measure of the staff, which is marked with the number '7'.

182 **M** **N**

8 7

mf

7

Detailed description: This staff contains measures 182 to 197. It starts with a treble clef and a key signature of two sharps. There are two boxes labeled 'M' and 'N' above the staff. The music consists of several measures of whole notes, followed by a measure with a fermata and the number '7' below it. The staff ends with a slur over a triplet of eighth notes, with a mezzo-forte (*mf*) dynamic marking below.

198 **O**

f *mf*

2 3

Detailed description: This staff contains measures 198 to 205. It starts with a treble clef and a key signature of two sharps. A box labeled 'O' is above the staff. The music features a forte (*f*) dynamic in the first measure, followed by a mezzo-forte (*mf*) dynamic. There are slurs and accents throughout. A fermata with the number '2' below it is placed over a measure. The staff ends with a slur over a triplet of eighth notes, with the number '3' below it.

206

f

Detailed description: This staff contains measures 206 to 212. It starts with a treble clef and a key signature of two sharps. The music is marked with a forte (*f*) dynamic. It features a series of eighth and sixteenth notes with slurs and accents.

213 **P** Tempo di Galop ♩ = 150

mf

Detailed description: This staff contains measures 213 to 220. It starts with a treble clef and a key signature of two sharps. A box labeled 'P' is above the staff. The tempo marking is 'Tempo di Galop' with a metronome marking '♩ = 150'. The music is marked with a mezzo-forte (*mf*) dynamic and consists of a rapid sequence of eighth and sixteenth notes.

221

Detailed description: This staff contains measures 221 to 227. It starts with a treble clef and a key signature of two sharps. The music continues with eighth and sixteenth notes, featuring slurs and accents.

228

Detailed description: This staff contains measures 228 to 233. It starts with a treble clef and a key signature of two sharps. The music continues with eighth and sixteenth notes, featuring slurs and accents.

234 **Q**

3

Detailed description: This staff contains measures 234 to 239. It starts with a treble clef and a key signature of two sharps. A box labeled 'Q' is above the staff. The music consists of a single measure with a fermata and the number '3' below it.

237 *sf* **3** *sf* **3** *sf*

248 *sf*

254 **R** *mp*

261

268

L'ostesso tempo, ♩ = 150

276 **S** *1 solo flurierături* **3** *f* **6** *f* *flurierături* *flurierături* *f*

292 **T** *flurierături* **2** *f* *flurierături* *f* **2**

300 *flurierături* *f* *flurierături* *f* **4**

308 **U** *ord.*
ff

316 **V**

324 **W**

332 **X**
ff 3 3 3 3 3 3

339 **Y**
sf *sf*

347 **Z**
ff

356

364

372 **AA**

380

f

387 **BB**

ff

396

404

CC

414

f

423

mf *sff*