

Ottoni d'Irlanda

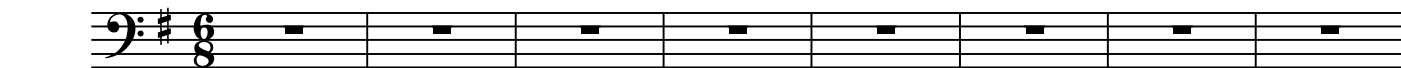
for brass ensemble

Trombone 2

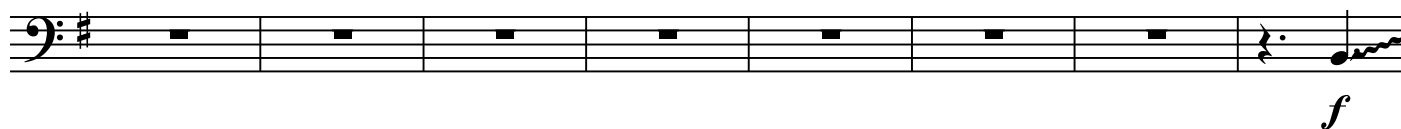
al Dublin Brass

Andrea Ferrante

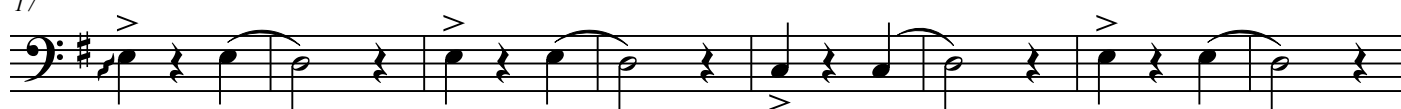
Allegro



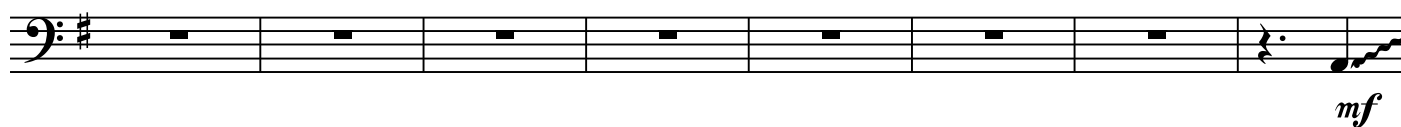
9



17



25



33



39



45



51



57

p

63

fp ff

70

77

mf

84

f

91

98

ff fff ff fff

107

mf

116

mf mf

125

mf *mp* *ff* *fp* *mf*

rit. **Maestoso**

Detailed description: This musical staff contains measures 125 through 132. It begins with a mezzo-forte (*mf*) dynamic. The tempo is marked *rit.* (ritardando) and **Maestoso**. The dynamics shift to mezzo-piano (*mp*) and then fortissimo (*ff*) for a section of sixteenth-note runs. This is followed by a fortissimo-piano (*fp*) section and ends with a mezzo-forte (*mf*) section.

133

ff *fp*

Detailed description: This musical staff contains measures 133 through 141. It starts with fortissimo (*ff*) and fortissimo-piano (*fp*) dynamics. The tempo is *rit.* (ritardando). The staff ends with a 4/4 time signature.

142

f

Detailed description: This musical staff contains measures 142 through 147. It begins with a forte (*f*) dynamic and features a series of sixteenth-note runs.

148

Detailed description: This musical staff contains measures 148 through 152. It continues with sixteenth-note runs and accents.

153

mp

rit. **Allegro**

Detailed description: This musical staff contains measures 153 through 157. It features sixteenth-note runs and accents. The tempo is marked *rit.* (ritardando) and **Allegro**. The dynamic is mezzo-piano (*mp*).

158

Detailed description: This musical staff contains measures 158 through 164. It begins with a few notes, followed by a 6/8 time signature and a series of rests.

165

f

Detailed description: This musical staff contains measures 165 through 172. It starts with a forte (*f*) dynamic and features a series of notes with accents.

173

p

Detailed description: This musical staff contains measures 173 through 179. It begins with a piano (*p*) dynamic and features a series of notes with accents.

180

fp *ff*

Detailed description: This musical staff contains measures 180 through 187. It features sixteenth-note runs and accents. The dynamics are fortissimo-piano (*fp*) and fortissimo (*ff*).

186



193



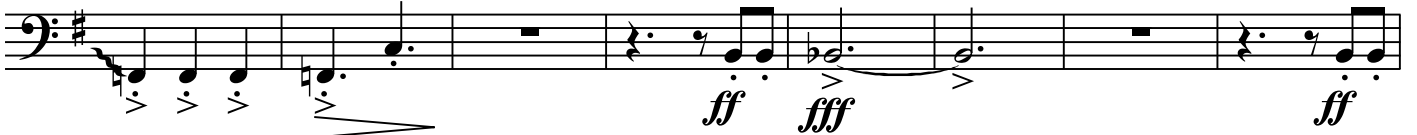
200



207



214



222



230



238



246



252

