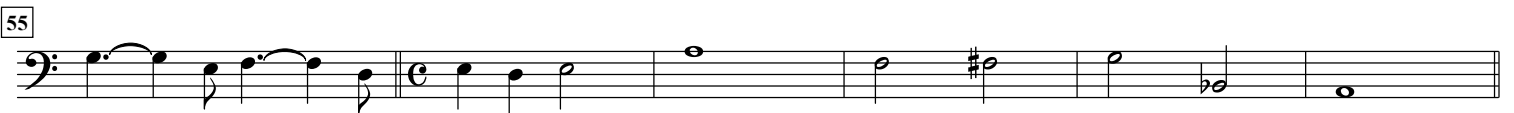
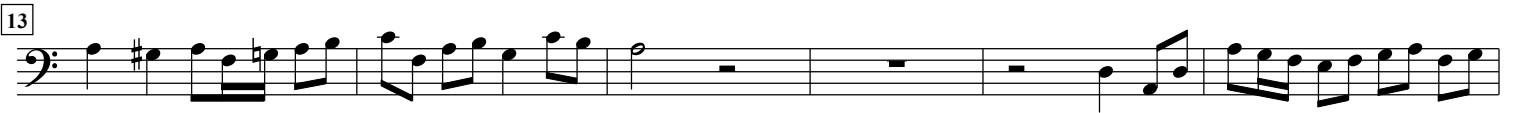


# La Bianchina Canti

arr. Hans Jorgen Messerschmidt

Girolamo Frescobaldi (1583-1643)



61  
Euphonium

Musical staff for Euphonium, measures 61-64. The staff is in bass clef with a 6/4 time signature. The key signature has one sharp (F#). The melody consists of eighth and quarter notes, ending with a half note and a quarter note.

65

Musical staff for Euphonium, measures 65-69. The staff is in bass clef with a 6/4 time signature. The key signature has one sharp (F#). The melody consists of half notes and quarter notes.

70

Musical staff for Euphonium, measures 70-75. The staff is in bass clef with a 6/4 time signature. The key signature has one sharp (F#). The melody consists of half notes and quarter notes.

76

Musical staff for Euphonium, measures 76-82. The staff is in bass clef with a 6/4 time signature. The key signature has one sharp (F#). The melody consists of half notes and quarter notes.

83

Musical staff for Euphonium, measures 83-86. The staff is in bass clef with a 6/4 time signature. The key signature has one sharp (F#). The melody consists of half notes and quarter notes, ending with a fermata.