



Trio Sonata in C

Johann Gottlieb Goldberg (1727-1756)

Arranged for Violin, Viola & Piano by Mike Magatagan 2015

I. Adagio

Violin

mf

4

7

10

12

14

17

19

21

23

25

28

II. Alla breve

mf

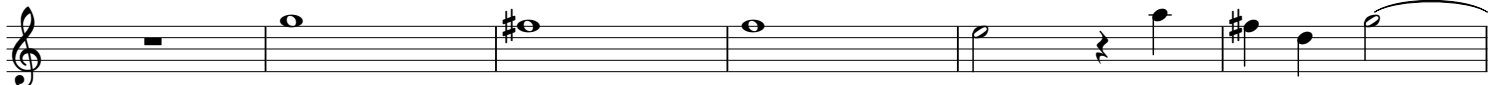
8

15

21



28



34



40



46



51



56



62



68



73



79



84



90



96



101



107



113



119

124

130

136

Musical notation for measures 113-135, including measures 113, 119, 124, 130, and 136. The notation features various rhythmic patterns, including eighth and sixteenth notes, and rests. A sharp sign (#) is present above a note in measure 113, and a flat sign (b) is present above a note in measure 119. Trills (tr) are indicated above notes in measures 136 and 137. The piece concludes with a double bar line and a 3/8 time signature.

III. Largo



6

10

15

19

24

Musical notation for measures 6-23 of the Largo section. The section begins with a 3/8 time signature and a mezzo-forte (mf) dynamic marking. It features a series of eighth and sixteenth notes, often beamed together. Trills (tr) are marked above notes in measures 6, 10, and 24. The section ends with a double bar line and a 3/8 time signature.

IV. Gigue (Presto)



1

5

9

13

17

Musical notation for measures 1-17 of the Gigue section. The section begins with a 12/8 time signature and a mezzo-forte (mf) dynamic marking. It features a series of eighth and sixteenth notes, often beamed together, with some notes marked with accents (^). The section ends with a double bar line and a 12/8 time signature.

This image shows a page of a musical score for the Violin Part of the Trio Sonata in C Major by Johann Gottlieb Goldberg, arranged by Mike Magatagan. The score is written in treble clef and consists of 12 staves of music, numbered 21 through 79. The music is in C major and features a variety of rhythmic patterns, including eighth and sixteenth notes, and rests. There are several trills (tr.) and first/second endings (1, 2) indicated. The score ends with a double bar line and repeat signs.