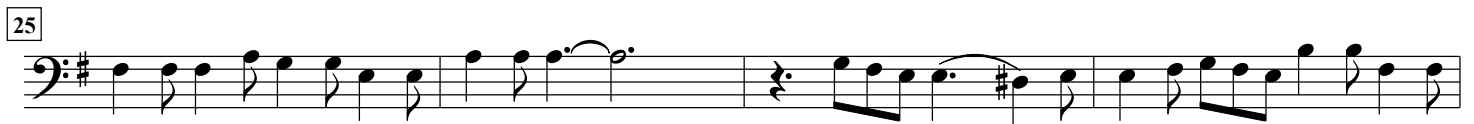


Giulio Cesare - Act 1 - Largo

arr. Hans Jorgen Messerschmidt

Georg Friederich Händel (1685-1759)

Largo (♩=56)



35

Euphonium

Musical notation for Euphonium, measures 35-37. The key signature is one sharp (F#). The notation consists of a single staff with a bass clef. Measure 35 starts with a quarter note G2, followed by quarter notes A2, B2, C3, D3, E3, F#3, G3. Measure 36 has a quarter note G3, a quarter rest, a quarter note F#3, and a half note E3. Measure 37 has a quarter rest, a quarter note D3, a quarter note C3, a quarter note B2, and a quarter note A2.

38

Musical notation for Euphonium, measures 38-39. The key signature is one sharp (F#). The notation consists of a single staff with a bass clef. Measure 38 starts with a quarter note G2, followed by quarter notes A2, B2, C3, D3, E3, F#3, G3. Measure 39 has a quarter note G3, a quarter note F#3, a quarter note E3, a quarter note D3, a quarter note C3, a quarter note B2, a quarter note A2, and a quarter note G2. The piece concludes with the instruction *D.S. al Fine*.