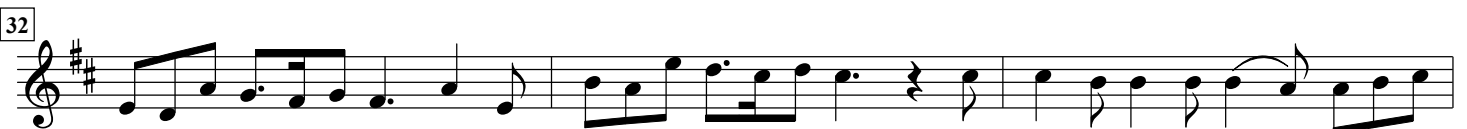
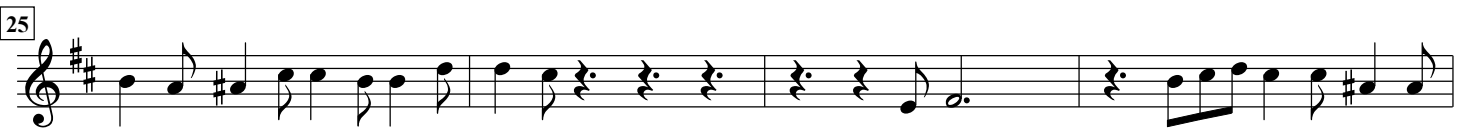
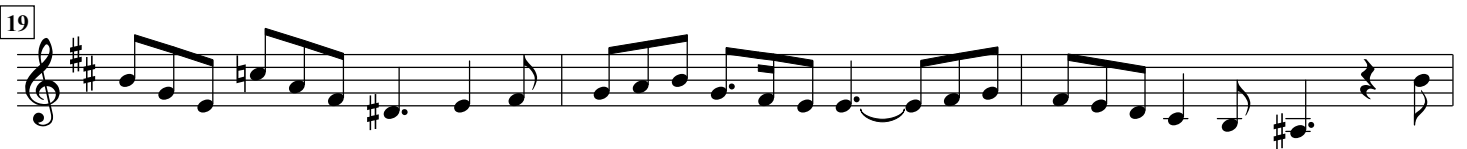
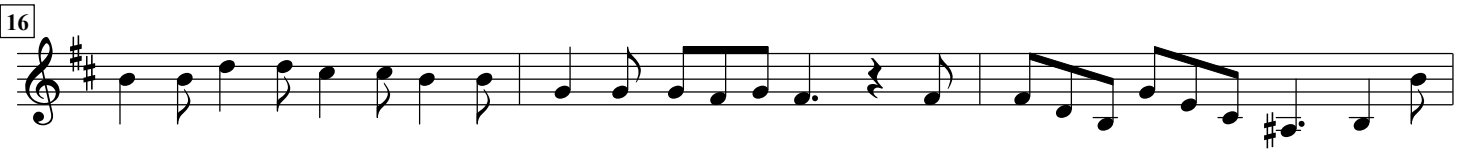


# Giulio Cesare - Act 1 - Largo

arr. Hans Jorgen Messerschmidt

Georg Friederich Händel (1685-1759)

Largo (♩=56)



35  
Horn F

Musical notation for Horn F, measures 35-37. The key signature is one sharp (F#). The notation consists of a single staff with a treble clef. Measure 35 starts with a quarter rest, followed by a quarter note G4, a quarter note A4, a quarter note B4, and a quarter note C5. Measure 36 starts with a quarter note D5, a quarter note E5, a quarter note F5, and a quarter note G5. Measure 37 starts with a quarter note A5, a quarter note B5, a quarter note C6, and a quarter note D6.

38

Musical notation for Horn F, measure 38. The key signature is one sharp (F#). The notation consists of a single staff with a treble clef. The measure contains a quarter note G4, a quarter note A4, a quarter note B4, a quarter note C5, a quarter note D5, a quarter note E5, a quarter note F5, a quarter note G5, a quarter note A5, a quarter note B5, a quarter note C6, and a quarter note D6. The measure ends with a double bar line and the instruction *D.S. al Fine*.