

Όπα! - ΌΡΑ!

για κλαρινέτο σολο, σαντούρι, κρούστα και ορχήστρα δωματίου - for clarinet solo, santouri, percussion and chamber orchestra

1. Elegia (Αντίο δελφινάκι) - Elegy for a dead dolphin

Herman Rechberger
Aigion 2015, revised version 2020

♩ = 54

4 pizz. 3

13 arco *mf* *sfz* *sfz*

20 *mf* *f* *mf*

26 *pp*

32 *mp*

39 *p* *mf*

46 *pp*

2. Stánkaino (Στάνκαινα)

49

Presto ♩ = 260



mf

56



pizz.

ff

mf

60



ff

mf

65



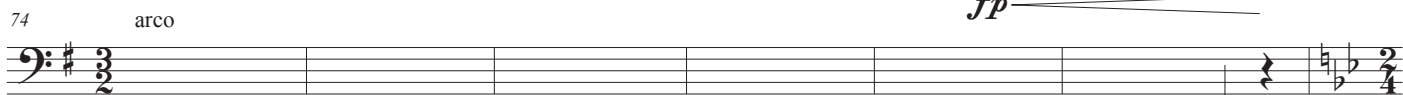
70



arco

fp

74



arco

pp

3. Sousta-Bállos (Σούστα/Μπάλλος) - Susta & Ballos

80

♩ = 100



pizz.

mf

89



99



109



119



129



138



146



4. Thyella (Θύελλα) - Storm

♩ = 128

Musical score for Thyella (Storm), measures 152 to 195. The score is written in bass clef with a key signature of two flats (B-flat and E-flat). The tempo is marked as ♩ = 128. The score includes dynamic markings such as *arco* and *f*, and performance instructions like *divisi*. The music features complex rhythmic patterns, including triplets and sixteenth notes, and a change in key signature from two flats to one flat (B-flat) at measure 165. The piece concludes with a double bar line and a 9/8 time signature.

5. Kidia sta vouná (Κυδεΐα στα βουνά) - Funeral in the mountains

♩ = 108

Musical score for Kidia sta vouná (Funeral in the mountains), measures 201 to 234. The score is written in bass clef with a key signature of one flat (B-flat) and a 9/8 time signature. The tempo is marked as ♩ = 108. The score includes dynamic markings such as *mf* and *p*. The music is characterized by a slow, somber mood with long note values and rests. The piece concludes with a double bar line and a key signature change to one sharp (F#) and a 6/4 time signature.

6. Taksími (Τακσίμι) - Improvisation, like a cadence

242 $\text{♩} = 100$

252

261

7. Yortés sto horiό (Γιορτής στο χωριό) - Village feast

269 $\text{♩} = 82$

278

286

295

308

319

8. Karsilamádes (Καρσιλαμάδες) - Karslamas dances

330 $\text{♩} = 100$

338

344

349

354



359



f

f

9. Finale (Φινάλε)

Presto ♩ = 110

arco

363



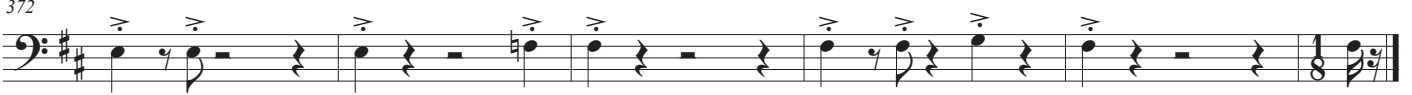
mf

367



mf

372



sfz