

Contrabass

The Danube Waves

Iosif Ivanovici arr. Ioan Dobrinescu

Tempo di Vals ♩ = 150

16

pizz.

pp

23

31

poco accel.

A

Più mosso ♩ = 180

arco

p

39

47

pizz.

p

55

63

B

p

71

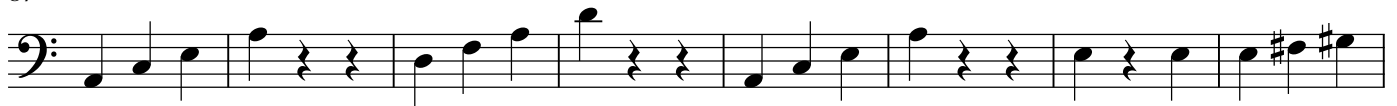
79

Poco mosso ♩ = 190

p

V.S.

87



95

C Sempre piu mosso ♩ = 196



102



108



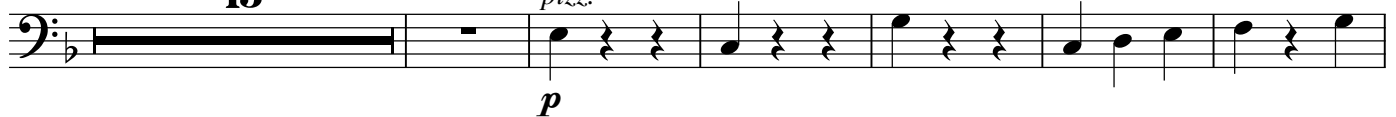
115



122



129 **D** A tempo ♩ = 186 rit. A tempo ♩ = 186
15 pizz.



150



158

E Poco animato ♩ = 196



166

mf

175

mp *p* *mp*

183

p *mf*

190

Poco meno mosso
♩ = 172
pizz.

p

198

p

206

p

214

p

222

arco **G** Vivo ♩ = 204

pp

230

pp

238 rit. Vivo ♩ = 204 rit.

pp

247 A tempo ♩ = 204

255 **H** Piu vivo ♩ = 212

f *pp* *f*

263

pp *f* *pp* *f*

271

ff *f* *pp* *f*

279

pp *f* *pp* *f*

287 **I** Presto ♩ = 220
pizz.

pp

295 rit.

303 Presto ♩ = 220

pp

312

Musical notation for measure 312, featuring a bass clef and a key signature of one flat. The notation includes a half note, a quarter note, and eighth notes.

321 **J** Prestissimo ♩ = 240

Musical notation for measure 321, marked *arco* and *pp*. It features a bass clef and a key signature of one flat. The notation includes a half note, a quarter note, and eighth notes.

329

Musical notation for measure 329, marked *rit.*. It features a bass clef and a key signature of one flat. The notation includes a half note, a quarter note, and eighth notes.

337 - Prestissimo ♩ = 240

Musical notation for measure 337, marked *mp* and *poco rit.*. It features a bass clef and a key signature of one flat. The notation includes a half note, a quarter note, and eighth notes.

344 Prestissimo ♩ = 240

Musical notation for measure 344, marked *mf*. It features a bass clef and a key signature of one flat. The notation includes a half note, a quarter note, and eighth notes.

352

Musical notation for measure 352, marked *f*. It features a bass clef and a key signature of one flat. The notation includes a half note, a quarter note, and eighth notes.

357

Musical notation for measure 357, marked *rit.*. It features a bass clef and a key signature of one flat. The notation includes a half note, a quarter note, and eighth notes.