

# Cross Roads Blues

Music by Robert Johnson / Arrgt Patrice Durand

♩ = 104

E-Gt

The first three staves of the guitar part are written in treble clef with a key signature of three sharps (F#, C#, G#) and a 4/4 time signature. The first staff begins with a dynamic marking of *mf*. The music consists of eighth and sixteenth notes, often beamed together, with various articulations such as accents (>) and slurs. The second and third staves continue the melodic and rhythmic patterns established in the first staff.

*Da Coda*

1.

The first staff of the first ending (marked '1.') features a sequence of chords and melodic lines. It includes a circled '2' above a measure, indicating a second ending or a specific fingering. The notation uses various note values and rests to create a rhythmic feel.

2.

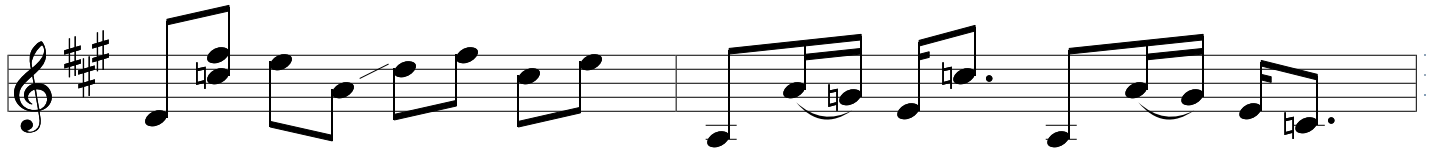
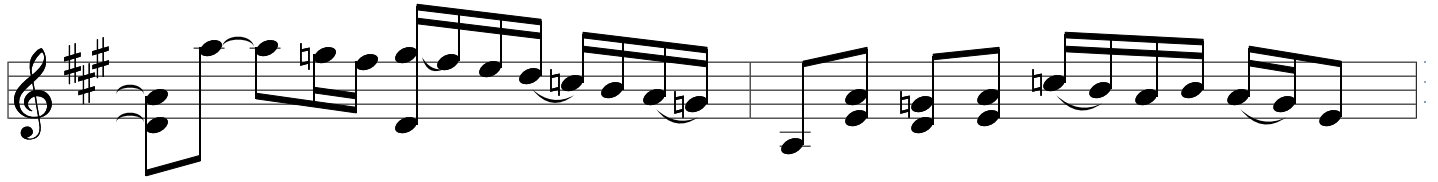
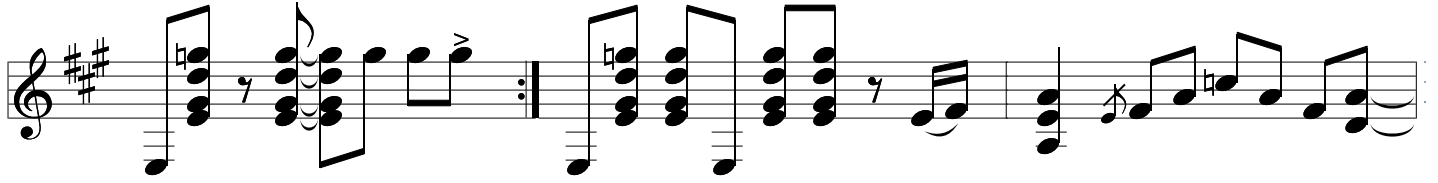
The first staff of the second ending (marked '2.') starts with a circled '2' above a measure. It contains a series of chords and melodic fragments, some with slurs and accents, leading towards the end of the piece.

The second staff of the second ending continues the melodic and harmonic development from the first staff, featuring eighth and sixteenth notes with various articulations.

The third staff of the second ending further develops the musical ideas, maintaining the bluesy feel with characteristic note patterns and dynamics.

The fourth and final staff of the second ending concludes the piece with a final melodic phrase and chord, ending with a double bar line.

1.



*Da Capo*

