



TREEMONISHA

A REAL SLOW DRAG

Adaptation pour orchestre d'harmonie

Scott JOPLIN

(1868-1917)

Saxophone ténor 2

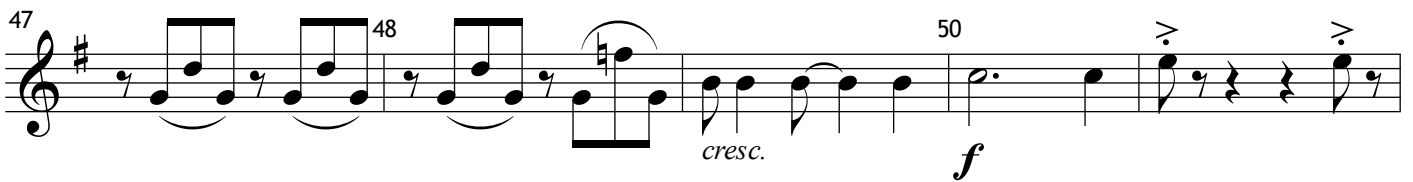
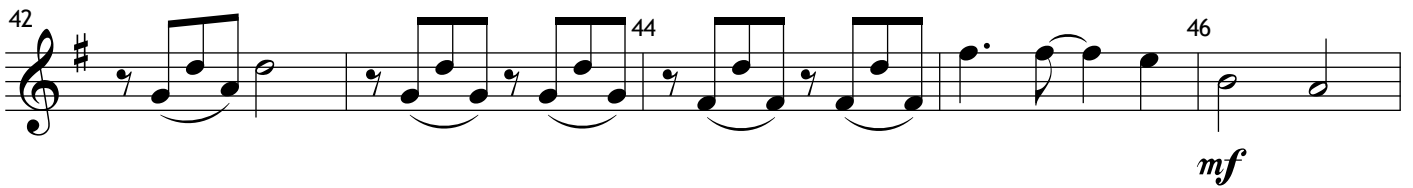
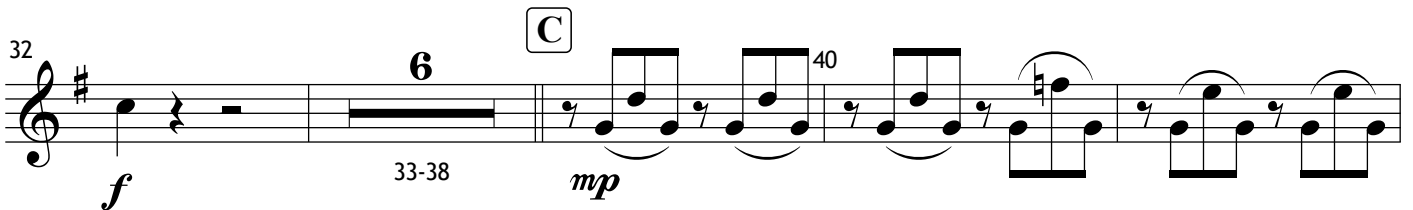
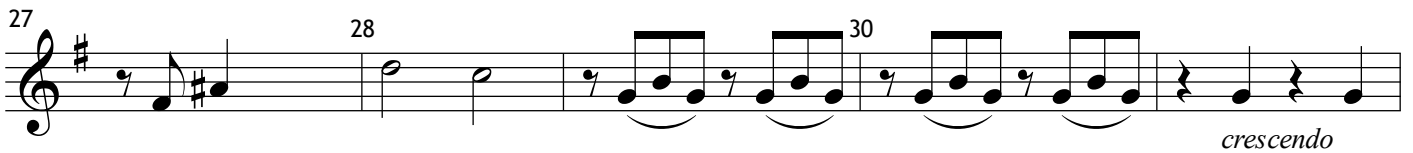
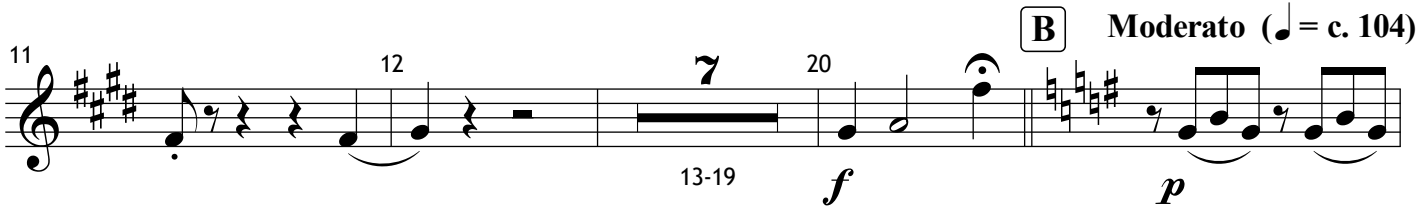
Orchestration :

Serge DALLE LUCHE

Larghetto $\text{♩} = 96$



A



52 *p* 54 56

D 9 66 4 72 *f* *p* *mp*

74 2 78 80 *mf* *mp*

E 10 92 94 *p*

95 96 98

100 102 6 **F** 110 *crescendo* *f* *mp*

111 112 114 116 *mf*

117 118 120 122 *cresc.* *f*

123 124 126 *allargando* 128 *p* *mf* *cresc.* *ff*