



Franz Vinzenz Krommer
(František Vincenc Kramář)
1759 - 1831

Quintett in B-dur für
Englischhorn, Violine, 2
Violen und Violoncello

Violoncello

Violoncello
Quintett in B für Englischhorn,
Violine, 2 Violen und Violoncello

Franz Krommer
(1759 - 1831)
Ed. D. Demus

Allegro

7

15

27

37

45

54

63

70

77

85

fp *fp* *p* *f* *p* *f* *fp* *f* *f* *p* *f* *fp* *f* *p*

Violoncello

92

99

105

112

121

131

138

146

153

161

168

175

Violoncello

Menuetto

Measures 1-9 of the Menuetto. The music is in bass clef, 3/4 time, and B-flat major. It begins with a forte (*f*) dynamic. The melody consists of eighth and quarter notes with some rests.

10

Measures 10-20 of the Menuetto. The music continues with a piano (*p*) dynamic. It features a series of eighth notes and quarter notes, ending with a fermata.

21

Measures 21-28 of the Menuetto. The music returns to a forte (*f*) dynamic. It concludes the first section with a repeat sign and a final cadence.

29 **Trio**

Measures 29-38 of the Trio section. The music is in bass clef, 3/4 time, and B-flat major. It begins with a piano (*p*) dynamic. The melody is characterized by dotted rhythms and eighth notes.

39

Measures 39-46 of the Trio section. The music continues with a piano (*p*) dynamic, featuring a melodic line with eighth notes and quarter notes.

47

Measures 47-54 of the Trio section. The music concludes with a piano (*p*) dynamic and a final cadence.

Menuetto da capo

Adagio

Measures 1-11 of the Adagio section. The music is in bass clef, 3/4 time, and B-flat major. It begins with a forte (*f*) dynamic, followed by a piano (*p*) dynamic. The melody is slow and features dotted rhythms.

12

Measures 12-20 of the Adagio section. The music continues with a piano (*p*) dynamic, featuring a series of eighth notes and quarter notes.

21

Measures 21-26 of the Adagio section. The music features a forte (*f*) dynamic, followed by a piano (*p*) dynamic. It includes a melodic line with eighth notes and quarter notes.

27

Measures 27-31 of the Adagio section. The music continues with a piano (*p*) dynamic, featuring a melodic line with eighth notes and quarter notes.

32

Measures 32-39 of the Adagio section. The music concludes with a forte (*f*) dynamic, followed by a piano (*p*) dynamic, and ends with a fortissimo (*fp*) dynamic. It features a melodic line with eighth notes and quarter notes.

Violoncello

38 *fp* *pp*

47 *p*

54 *p*

62 *pp* *f* *p* *f* *p*

73 *p*

81 *p* *f* *f*

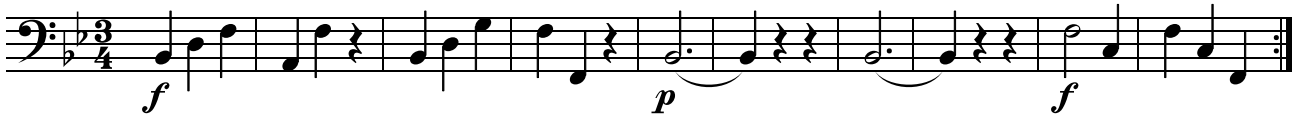
88 *p*

97 *fp* *pp*

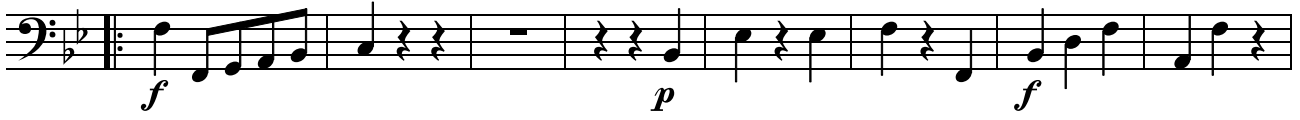
The image shows a page of a cello score with eight staves of music. Each staff begins with a measure number. The music is written in bass clef with a key signature of one flat. Dynamic markings include *fp*, *pp*, *f*, *p*, and *pp*. The score includes various musical notations such as slurs, accents, and phrasing slurs.

Violoncello

Menuetto



11



19



27 **Trio** *pizz.*



35



40



Menuetto da capo

Andante con variazione



7



15



20



Violoncello

24



32



38



42



46



53



59



65



Violoncello

Allegro

Rondo

Violoncello score for Rondo, Allegro, measures 1-72. The score is written in bass clef, 6/8 time, and B-flat major. It consists of ten staves of music. The first staff (measures 1-7) starts with a piano (*p*) dynamic. The second staff (measures 8-14) features a forte (*f*) dynamic. The third staff (measures 15-23) returns to piano (*p*). The fourth staff (measures 24-30) features a forte (*f*) dynamic. The fifth staff (measures 31-36) returns to piano (*p*). The sixth staff (measures 37-47) features a forte (*f*) dynamic, with a 4-measure rest indicated by a '4' below the staff. The seventh staff (measures 48-53) returns to piano (*p*). The eighth staff (measures 54-61) continues with piano (*p*). The ninth staff (measures 62-67) features a forte (*f*) dynamic. The tenth staff (measures 68-72) returns to piano (*p*).

Violoncello

78 **Adagio**



86



91



98



111 **Allegro**



118



122



129



138



144



147



152

