

Oboe

"Sextus Psalmus poenitentialis"

Orlande de Lassus (LV 799) ca. 1584

Interpretation for Wind Sextet by Mike Magatagan 2024

I. De profundis clamavi ad te, Domine (♩ = 100)

Musical notation for the first section of the Oboe part, measures 1-8. The notation is in a single system with a treble clef and a key signature of one flat. It begins with a dynamic marking of *mf*. The music features a melodic line with various note values, including quarter, eighth, and sixteenth notes, and rests. A trill is indicated above the eighth measure. The section concludes with a *rit.* marking and a fermata over the final note.

II. Fiant aures tuae (♩ = 100)

Musical notation for the second section of the Oboe part, measures 9-12. The notation is in a single system with a treble clef and a key signature of one flat. It begins with a whole rest in the first measure. The music consists of a melodic line with quarter and eighth notes. A *rit.* marking is placed above the twelfth measure, which ends with a fermata.

III. Si iniquitates (♩ = 100)

Musical notation for the third section of the Oboe part, measures 13-18. The notation is in a single system with a treble clef and a key signature of one flat. It begins with a whole rest in the first measure. The music features a melodic line with quarter and eighth notes. A *rit.* marking is placed above the eighteenth measure, which ends with a fermata.

IV. Quia apud te (♩ = 100)

Musical notation for the fourth section of the Oboe part, measures 19-21. The notation is in a single system with a treble clef and a key signature of one flat. It begins with the word "TACET" in the first measure. The music is silent for two measures, followed by a final measure with a fermata.

V. Sustinuit anima mea (♩ = 100)

Musical notation for the fifth section of the Oboe part, measures 22-27. The notation is in a single system with a treble clef and a key signature of one flat. It begins with a whole rest in the first measure. The music features a melodic line with quarter and eighth notes, including a sharp sign above a note in the sixth measure. A *rit.* marking is placed above the twenty-seventh measure, which ends with a fermata.

VI. A custodia matutina (♩ = 100)



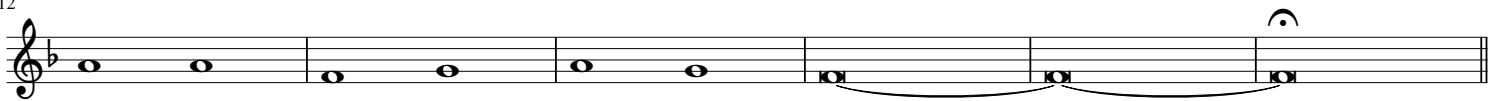
11



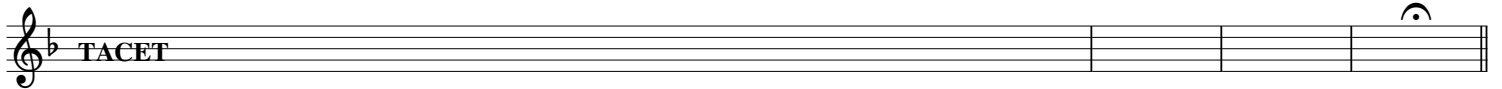
VII. Quia apud Dominum (♩ = 100)



12



VIII. Et ipse redimet Israel (♩ = 100)



IX. Gloria Patri (♩ = 100)



12



X. Sicut erat in principio (♩ = 100)



10



18

