

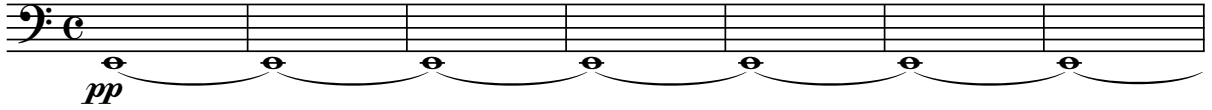
Contrabbassi

MAURIZIO BIGNONE

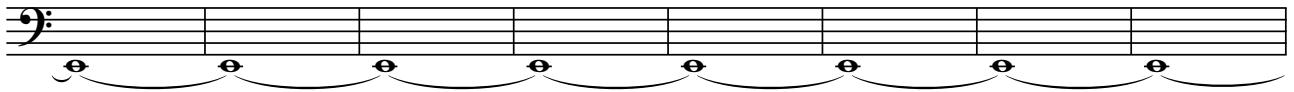
Il mistero di Cossyra

per orchestra d'archi

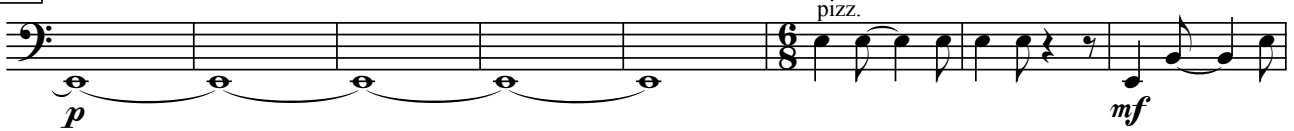
♩ = 60



8



16



24



31



37



47



55



62



68 Cb - 2

74

arco

mp *mf* *rall.*

84

pp *f*

pizz.

$\bullet = 112$

90

96

102

arco

ff *mf*

110

115

120

124

128

mp

pizz.

132

137

Cb - 3

142

147

mf

152

mp

157

162

mf

167

171

f

177

181

186

ff

190

mp

195

Cb - 4

Musical staff for measure 195, featuring a bass clef and a series of eighth notes with stems pointing up.

203

Musical staff for measure 203, featuring a bass clef and a series of eighth notes with stems pointing up. The dynamic marking *mf* is placed below the staff.

211

Musical staff for measure 211, featuring a bass clef and a series of eighth notes with stems pointing up.

218

Musical staff for measure 218, featuring a bass clef and a series of eighth notes with stems pointing up.

225

Musical staff for measure 225, featuring a bass clef and a series of eighth notes with stems pointing up.

232

Musical staff for measure 232, featuring a bass clef and a series of eighth notes with stems pointing up. A hairpin symbol is visible at the end of the staff.

239

Musical staff for measure 239, featuring a bass clef and a series of eighth notes with stems pointing up. The dynamic marking *f* is placed below the staff.

246

Musical staff for measure 246, featuring a bass clef and a series of eighth notes with stems pointing up.

253

Musical staff for measure 253, featuring a bass clef and a series of eighth notes with stems pointing up.

260

Musical staff for measure 260, featuring a bass clef and a series of eighth notes with stems pointing up.

267

Musical staff for measure 267, featuring a bass clef and a series of eighth notes with stems pointing up. The dynamic marking *pp* is placed below the staff. A horizontal line spans the width of the staff below the notes, with the text *senza rallentare* centered underneath it.