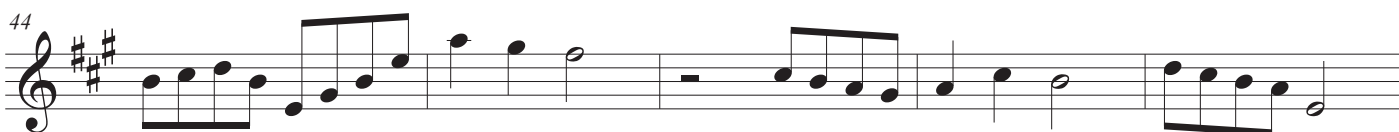
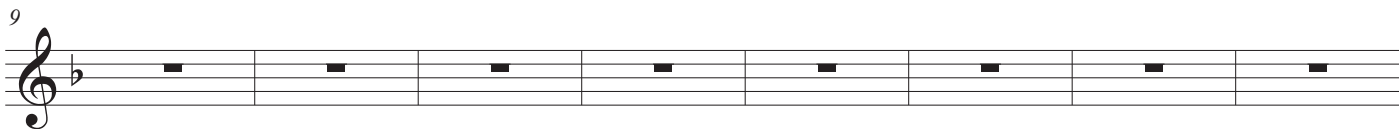
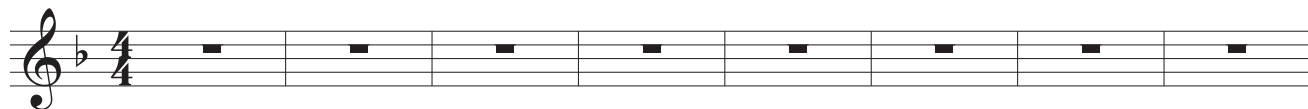


Ballata in re minore

di Alfredo Muzzi

♩ = 120



Ballata in re minore

di Alfredo Muzzi

♩ = 120



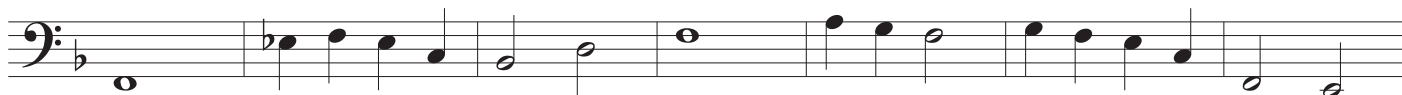
7



14



21



28



34



41



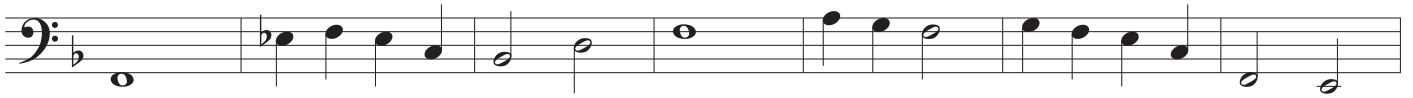
48



54



61



68



74



80



86



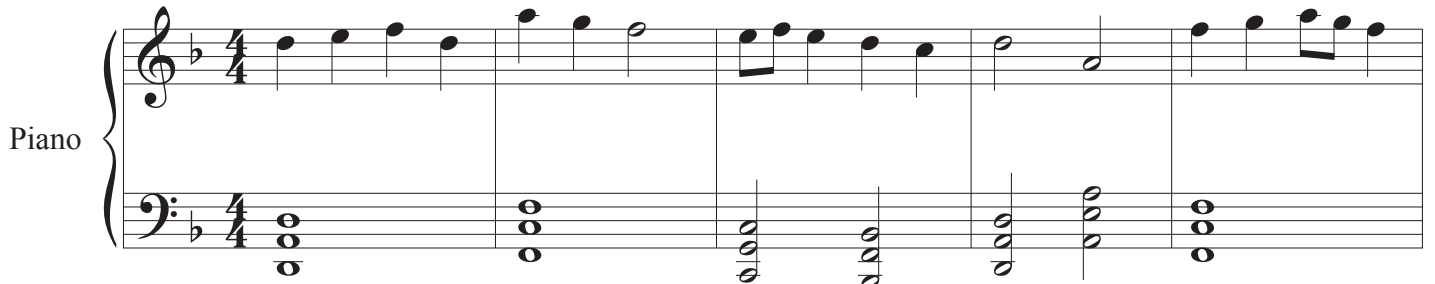
Piano

Ballata in re minore

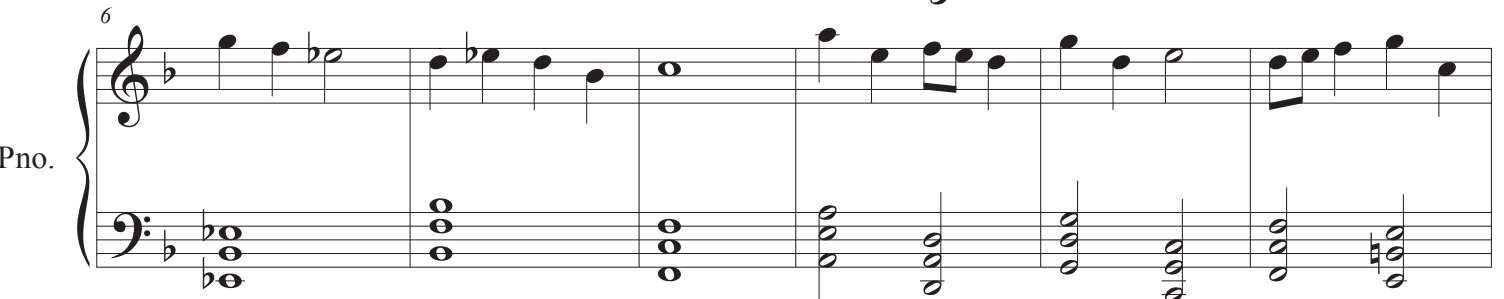
di Alfredo Muzzi

♩ = 120

Piano




Pno.



Pno.



Pno.



Pno.



Pno.



Ballata in re minore

2
29

Pno.

Measures 29-32: The right hand plays a series of chords, starting with a D minor triad and moving to a D minor chord with a 9th. The left hand plays a steady eighth-note accompaniment.

33

Pno.

Measures 33-36: The key signature changes to D major (two sharps). The right hand features a melodic line with eighth-note runs, while the left hand continues with eighth-note accompaniment.

37

Pno.

Measures 37-40: The right hand plays chords and a short melodic phrase. The left hand maintains the eighth-note accompaniment.

41

Pno.

Measures 41-45: The right hand has a melodic line with eighth-note runs. The left hand continues with eighth-note accompaniment.

46

Pno.

Measures 46-50: The right hand plays chords and a melodic phrase. The left hand continues with eighth-note accompaniment.

51

Pno.

Measures 51-54: The right hand plays chords and a melodic phrase. The left hand continues with eighth-note accompaniment.

Ballata in re minore

56

Pno.

60

Pno.

64

Pno.

68

Pno.

72

Pno.

76

Pno.

Ballata in re minore

4
80

Pno.

This system contains measures 80 through 83. The right hand (treble clef) features a melodic line with a dotted quarter note followed by an eighth note, and a sixteenth-note triplet. The left hand (bass clef) plays a steady eighth-note accompaniment. The key signature has one flat (B-flat).

84

Pno.

This system contains measures 84 through 87. The right hand continues the melodic line with chords and rests. The left hand maintains the eighth-note accompaniment. The key signature remains one flat.

88

Pno.

This system contains measures 88 through 91. The right hand has sparse notes, including a half note and a quarter note. The left hand has chords and a half note. The piece concludes with a double bar line. The key signature remains one flat.