

# Gesang

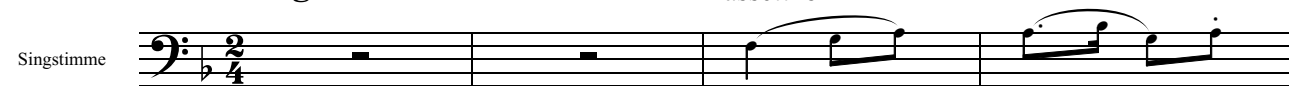
## Lehre des Lebens

Carl Oestreich  
1800-1840

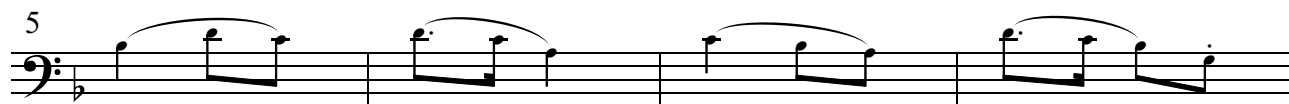
**Allegretto**

Bassetthorn

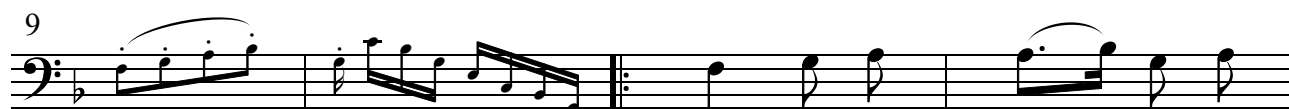
Singstimme



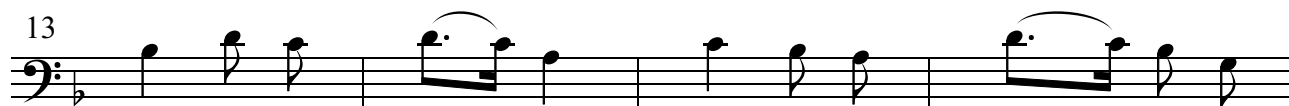
*p*



*cresc.*



Stunden ent - fliegen und



Tage und Jahre, Leiden und Freuden, mit



wechselndem Lauf. Sucht nur die Seele das



Gute, das Wahre, wiegt die Mi -



nute die Jah - re wohl



auf. *dolce* Hat uns der Gruß der Ver - wandten ge -

# Gesang

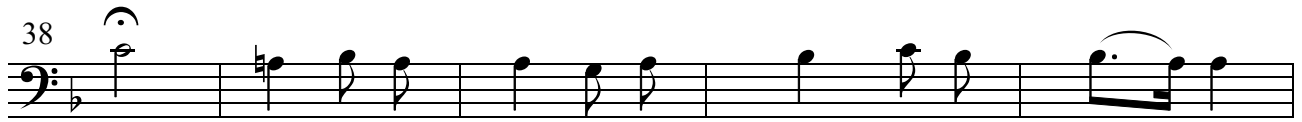
34



fun-den, schlägt für das Schöne, das fühlende Herz.

Detailed description: This system contains measures 34 through 37. The music is written on a bass clef staff with a key signature of one flat (B-flat). Measure 34 starts with a half note G2, followed by quarter notes F2, E2, and D2. Measure 35 has a half note C2, followed by quarter notes B1, A1, and G1. Measure 36 has a half note F1, followed by quarter notes E1, D1, and C1. Measure 37 has a half note B0, followed by quarter notes A0, G0, and F0.

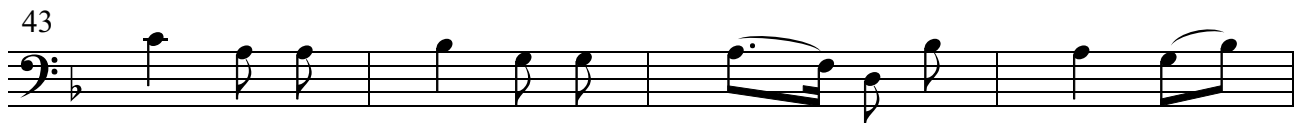
38



> Dann in der Weihe be - glückender Stunden

Detailed description: This system contains measures 38 through 42. Measure 38 starts with a half note G2, followed by quarter notes F2, E2, and D2. Measure 39 has a half note C2, followed by quarter notes B1, A1, and G1. Measure 40 has a half note F1, followed by quarter notes E1, D1, and C1. Measure 41 has a half note B0, followed by quarter notes A0, G0, and F0. Measure 42 has a half note E1, followed by quarter notes D1, C1, and B0.

43



heilen des Lebens ver - blutende Stunden

Detailed description: This system contains measures 43 through 46. Measure 43 has a half note G2, followed by quarter notes F2, E2, and D2. Measure 44 has a half note C2, followed by quarter notes B1, A1, and G1. Measure 45 has a half note F1, followed by quarter notes E1, D1, and C1. Measure 46 has a half note B0, followed by quarter notes A0, G0, and F0.

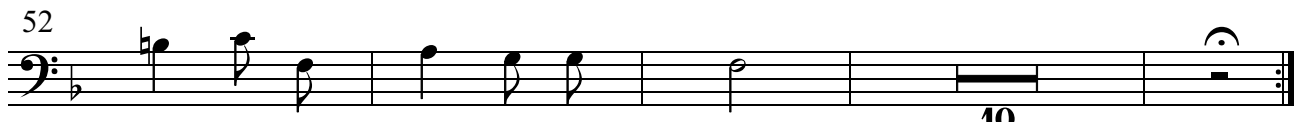
47



wandelt zur Wonne für ewig den Schmerz, wandelt zur

Detailed description: This system contains measures 47 through 51. Measure 47 has a half note G2, followed by quarter notes F2, E2, and D2. Measure 48 has a half note C2, followed by quarter notes B1, A1, and G1. Measure 49 has a half note F1, followed by quarter notes E1, D1, and C1. Measure 50 has a half note B0, followed by quarter notes A0, G0, and F0. Measure 51 has a half note G2, followed by quarter notes F2, E2, and D2.

52



Wonne für ewig den Schmerz. **10**

Detailed description: This system contains measures 52 through 55. Measure 52 has a half note G2, followed by quarter notes F2, E2, and D2. Measure 53 has a half note C2, followed by quarter notes B1, A1, and G1. Measure 54 has a half note F1, followed by quarter notes E1, D1, and C1. Measure 55 has a half note B0, followed by quarter notes A0, G0, and F0. The system ends with a double bar line and a repeat sign.