

Album infantil

"Un día de un pequeño"

Violini II

1. Al despertarse

musica de Yury Pronin

Musical score for 'Al despertarse' (Violini II). The score is written in treble clef with a common time signature (C). It consists of five staves of music. The first staff begins with a *pp* dynamic marking. The second staff has a *pp* marking. The third staff has a *p* marking. The fourth staff has a *pp* marking. The fifth staff has a *2* (second ending) marking. The music features various note values, including quarter, eighth, and sixteenth notes, as well as rests and slurs.

2. Mi mamá

Musical score for 'Mi mamá' (Violini II). The score is written in treble clef and begins with a 3/4 time signature. It consists of four staves of music. The first staff has a *p* dynamic marking. The second staff has a *pp* marking. The third staff has a *2* (second ending) marking. The fourth staff has a *5* (fifth ending) marking and a *p* dynamic marking. The music features various note values, including quarter, eighth, and sixteenth notes, as well as rests and slurs.

72 Musical staff 72-80: Treble clef, key signature of one flat. Measures 72-80. Measure 74 has a fermata with a '2' above it. Measure 80 ends with a double bar line and a fermata.

81 Musical staff 81-89: Treble clef, key signature of one flat. Measures 81-89. Measure 84 has a fermata with a '2' above it. Measure 89 has a 'rit.' marking. Ends with a double bar line and a fermata.

90 Musical staff 90-97: Treble clef, key signature of one flat. Measures 90-97. Measures 91-97 are mostly whole rests. Ends with a double bar line.

3. Papa!

98 Musical staff 98-103: Treble clef, key signature of one flat. Measures 98-103. Measure 98 starts with a forte *f* dynamic. Measure 103 has a piano *p* dynamic. Ends with a double bar line.

104 Musical staff 104-112: Treble clef, key signature of one flat. Measures 104-112. Measure 104 has a piano *p* dynamic. Measure 107 has a fermata with a '4' above it. Ends with a double bar line.

113 Musical staff 113-118: Treble clef, key signature of one flat. Measures 113-118. Measure 113 starts with a forte *f* dynamic, followed by a subito piano *subito p* marking. Measure 118 has a mezzo-forte *mf* dynamic. Ends with a double bar line.

119 Musical staff 119-125: Treble clef, key signature of one flat. Measures 119-125. Measure 125 has a fortissimo *ff* dynamic. Measure 124 has a fermata with a '2' above it. Ends with a double bar line.

126 Musical staff 126-130: Treble clef, key signature of one flat. Measures 126-130. Measure 126 has a piano *p* dynamic. Measure 130 has a forte *f* dynamic. Ends with a double bar line and a 3/4 time signature change.

4. Abuelita...

131 Musical staff 131-140: Treble clef, key signature of two flats, 3/4 time signature. Measures 131-140. Measure 131 has a piano *p* dynamic. Measure 132 has a fermata with a '4' above it. Ends with a double bar line.

141 Musical staff 141-151: Treble clef, key signature of two flats, 3/4 time signature. Measures 141-151. Measure 141 has a piano *p* dynamic. Measure 142 has a fermata with a '5' above it. Measure 151 has a mezzo-forte *mf* dynamic. Ends with a double bar line.

152 Musical staff 152-159: Treble clef, key signature of two flats, 3/4 time signature. Measures 152-159. Measure 152 has a piano *p* dynamic. Ends with a double bar line.

159 **6** **3**

173 *pp*

5. Mi querido osito de peluche

180 *mp* *rit.* *a tempo* **3** *p*

188 **3**

195 *mp* *rit.* *a tempo* **3** *p*

203

6. A jugar con mis amigos!

209 **4** **3** *f* *subito p* *rit.* *a tempo* *f*

219

225 **3** *f*

231 *mf*

236 *f*

243



7. Pelea por la pelota

249



255



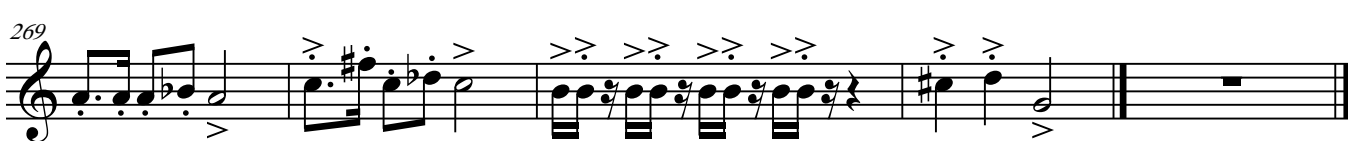
260



264



269



8. Reconciliacion

274



280



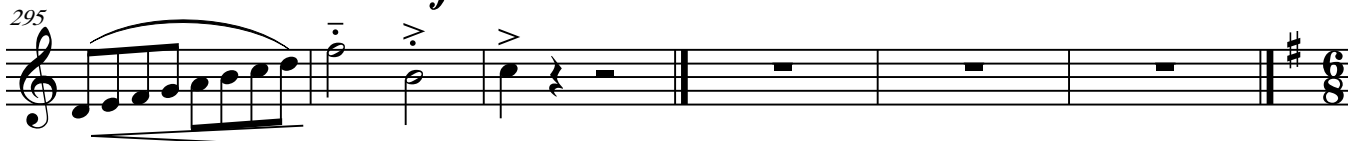
286



290



295



5
9. Dibujos animados en TV

301 *mf* 8

314

320 *f* 2

327

332

Musical score for '9. Dibujos animados en TV'. It consists of five staves of music in treble clef with a key signature of one sharp (F#). The first staff starts at measure 301 with a dynamic marking of *mf* and a fermata over an 8-measure rest. The second staff starts at measure 314. The third staff starts at measure 320 with a dynamic marking of *f* and a fermata over a 2-measure rest. The fourth staff starts at measure 327. The fifth staff starts at measure 332 and ends with a double bar line.

10. A dormir...

338 *p*

344

350

357 4

366 4 *pp*

Musical score for '10. A dormir...'. It consists of five staves of music in treble clef with a key signature of one sharp (F#). The first staff starts at measure 338 with a dynamic marking of *p* and features several slurs and accents. The second staff starts at measure 344. The third staff starts at measure 350. The fourth staff starts at measure 357 and ends with a fermata over a 4-measure rest. The fifth staff starts at measure 366 and ends with a fermata over a 4-measure rest and a dynamic marking of *pp*.