

Allegro deciso ♩ = 168

III

8 *mf* sempre non legato

15 *f*

26 *mf*

41 *mf* cresc.

50 *sfz*

54 Lento ♩ = 40 *p*

65 *mp* *mf*

72 *cresc.*

78 *dim.*

85

88 Allegro deciso ♩ = 168 *15*

112 *mf*

120 *mf* cresc. *f*

151



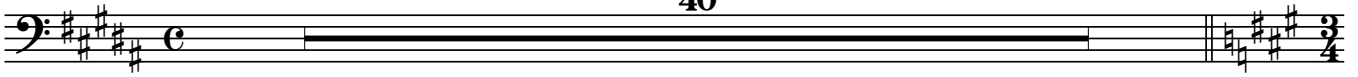
137



142

Sostenuto, senza vibrato ♩ = 46

40



182

Allegro deciso ♩ = 168

8



197

4



208

8



223

cresc.



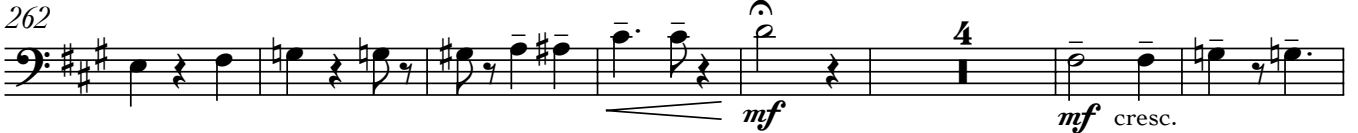
232

22



262

4



273



281



288

più lento

