

# Gotango

Philippe Rose

clarinet

$\text{♩} = 106$       3      8

13

17

20

23

26

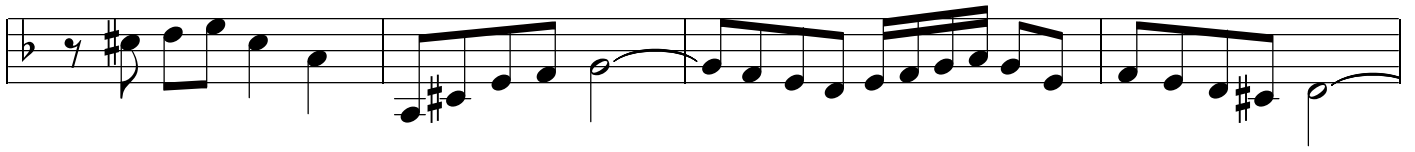
30

35

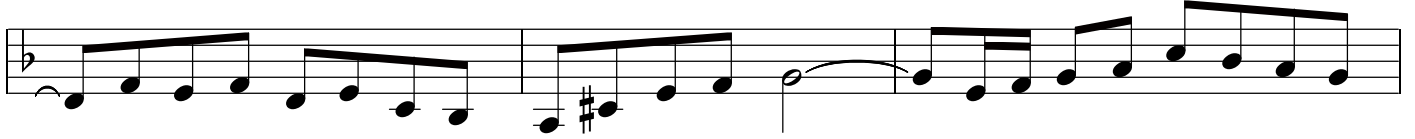
39

Detailed description: The score is for a clarinet in 4/4 time with a tempo of 106. It begins with a treble clef and a key signature of one flat (B-flat). The first two measures are completely obscured by thick black bars, with a '3' above the first bar and an '8' above the second bar. The music then begins at measure 13. The melody consists of eighth and quarter notes, with some slurs and accents. The key signature changes to two flats (B-flat and E-flat) at measure 20. The piece concludes with a double bar line at measure 39.

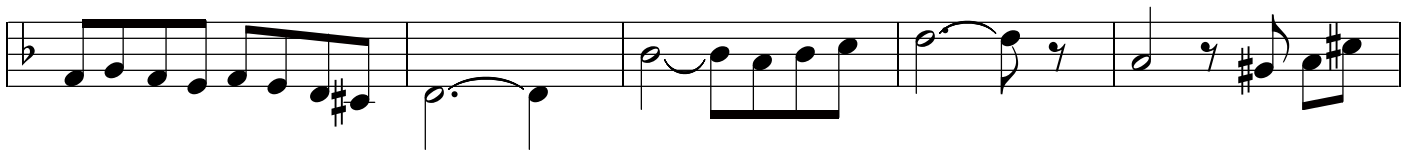
43



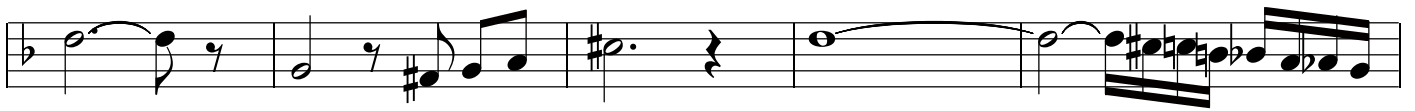
47



50



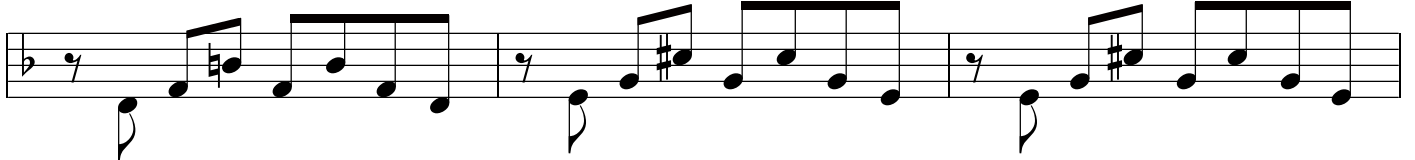
55



60



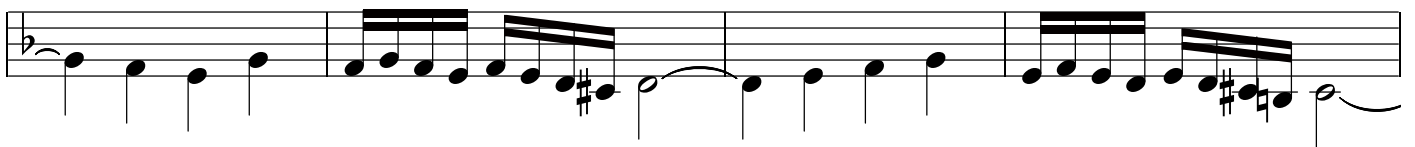
63



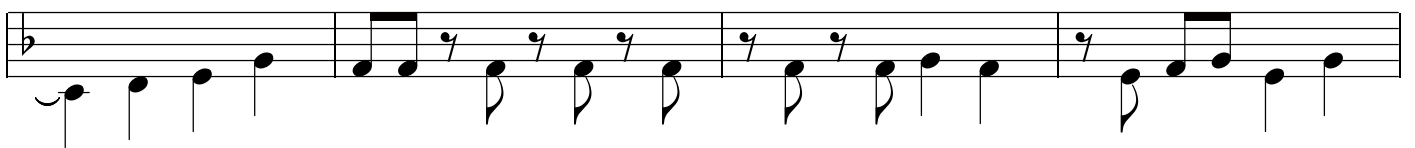
66



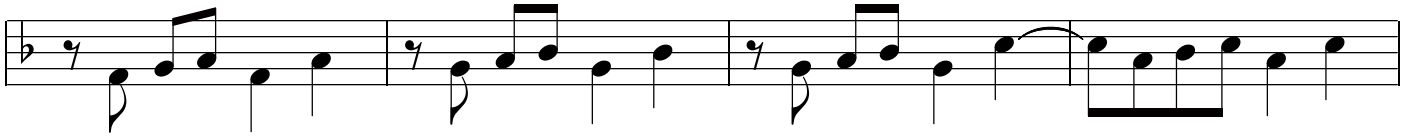
69



73



77



81



85

