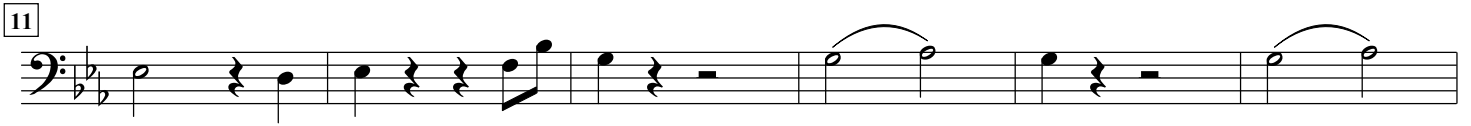


Il signor Bruschino

arr. Hans Jorgen Messerschmidt

Gioacchino Rossini (1792-1868)

Allegro (♩=120)



62

Euphonium

67

72

77

83

88

94

100

106

111

116

121

129

Euphonium

134

140

146

ritard.

155

161

166

172

177

182

187

193

198 Euphonium

203

209

214

219

225

231

237

244

250

255

261

266

Euphonium



Musical notation for Euphonium, measures 266-270. The key signature is two flats (B-flat and E-flat), and the time signature is 4/4. The notation consists of a single staff with a bass clef. Measure 266 starts with a quarter note G2, followed by eighth notes A2, B2, and C3. Measure 267 has a quarter rest, followed by eighth notes D3, E3, and F3. Measure 268 has a quarter rest, followed by eighth notes G3, A3, and B3. Measure 269 has a quarter rest, followed by eighth notes C4, B3, and A3. Measure 270 has a quarter rest, followed by eighth notes G3, F3, and E3.

271



Musical notation for Euphonium, measures 271-273. The key signature is two flats (B-flat and E-flat), and the time signature is 4/4. The notation consists of a single staff with a bass clef. Measure 271 has a quarter note G2, followed by a quarter rest. Measure 272 has a quarter rest, followed by eighth notes A2, B2, and C3. Measure 273 has a quarter rest, followed by eighth notes D3, E3, and F3, and a fermata over the final note.