

Trombone

FESTADAC

PATRICK
SALANEUVE

♩=68

4

f

♩=100

♩=116

7

10

13

16

19

rit.

ff

♩=116

♩=124

22

f

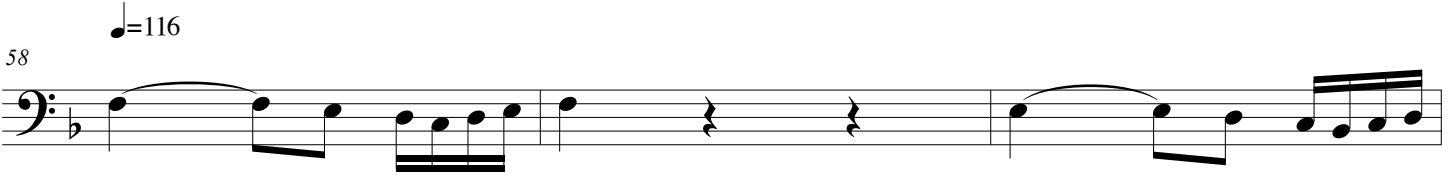
52 *rit.*



55 $\text{♩} = 68$



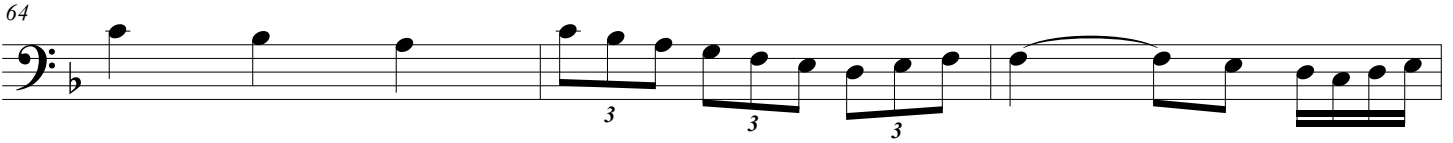
58 $\text{♩} = 116$



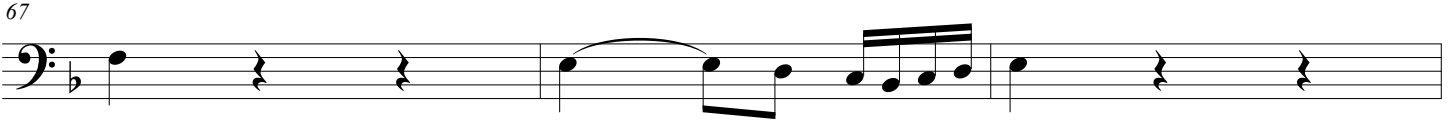
61



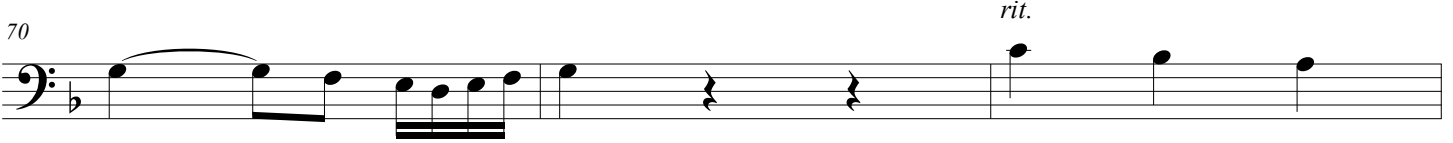
64



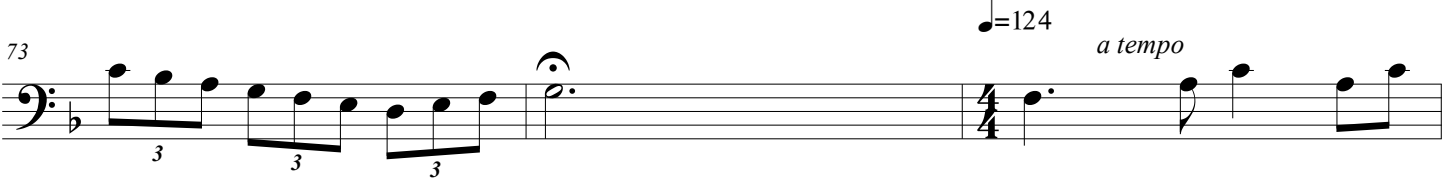
67



70 *rit.*



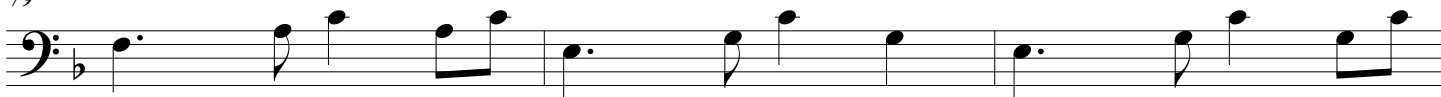
73 $\text{♩} = 124$ *a tempo*



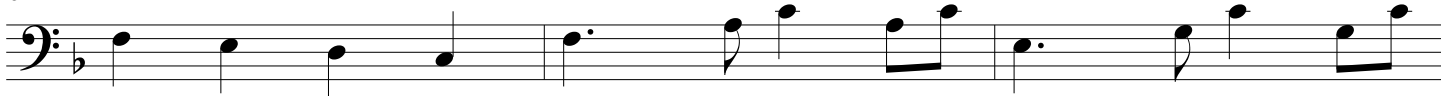
76



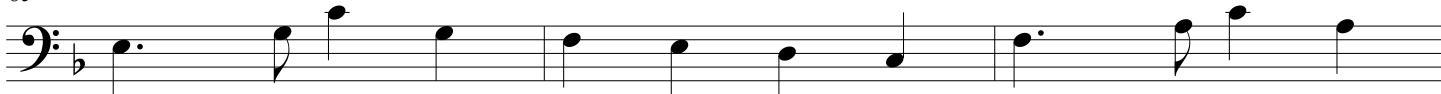
79



82



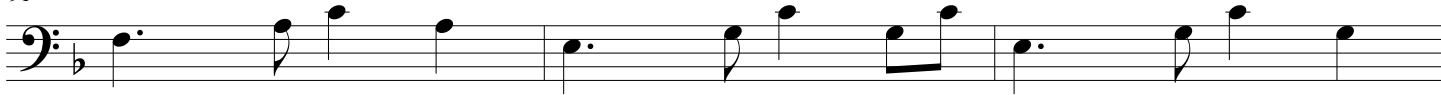
85



88



91



94



97

