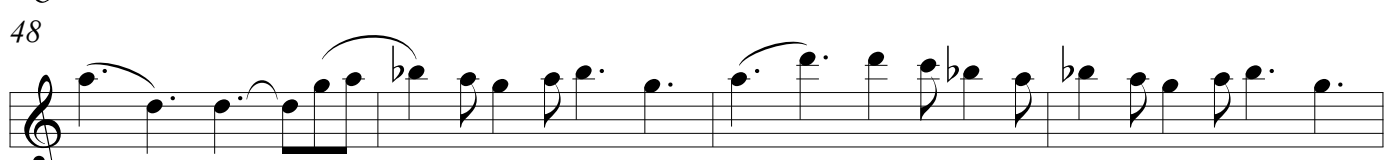
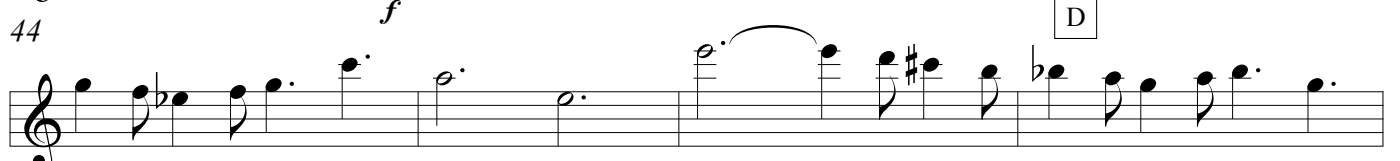
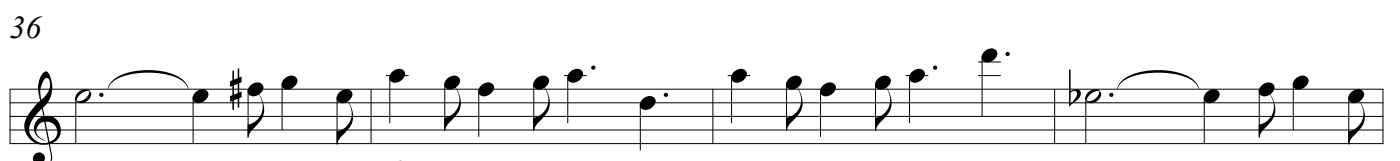
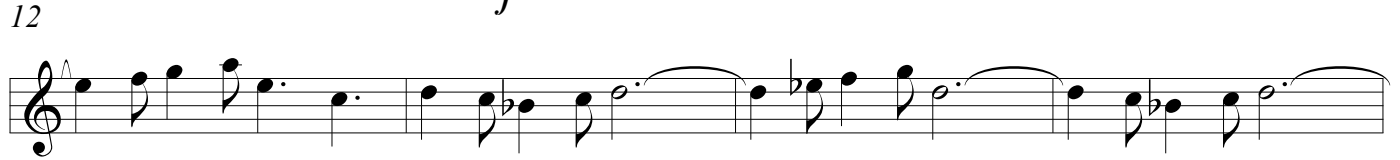
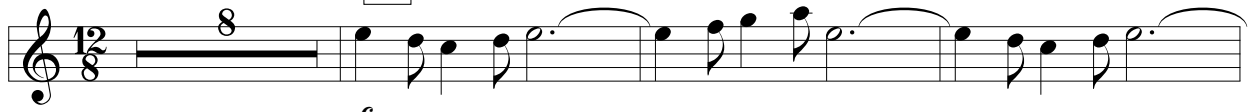


'Concerto Romantique' III

Kees Schoonenbeek

Molto allegro $\text{♩} = 100$

A



'Concerto Romantique'

52

56

60

64 *f*

67

70

73

79 *ff*

84 *f*

fp

Detailed description: This page of sheet music contains ten staves of music in treble clef. The first staff (measures 52-55) features a melodic line with a half note, a quarter note, and a dotted quarter note. The second staff (measures 56-59) includes a boxed 'E' above measure 57. The third staff (measures 60-63) shows a melodic line with a half note and a quarter note. The fourth staff (measures 64-66) is marked with a forte 'f' dynamic. The fifth staff (measures 67-69) continues the melodic line. The sixth staff (measures 70-72) features a melodic line with a half note and a quarter note. The seventh staff (measures 73-76) shows a melodic line with a half note and a quarter note. The eighth staff (measures 79-83) is marked with a fortissimo 'ff' dynamic. The ninth staff (measures 84-87) is marked with a forte 'f' dynamic. The tenth staff (measures 84-87) is marked with a fortissimo piano 'fp' dynamic. The music concludes with a double bar line.