

# Estudio 5

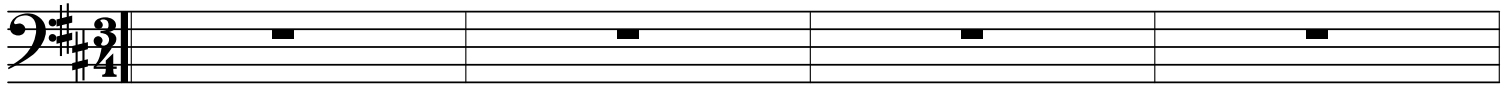
Strings

Musique : Fernando Sor  
Arrangements : Thierry Chauve

Bm

F#7

Bm/F#

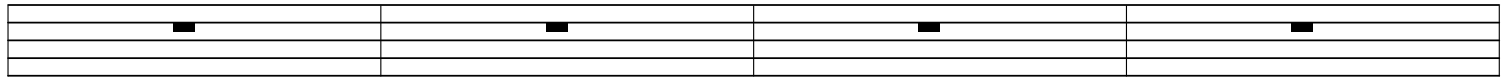


F#

Bm/F#

Em/G

F#

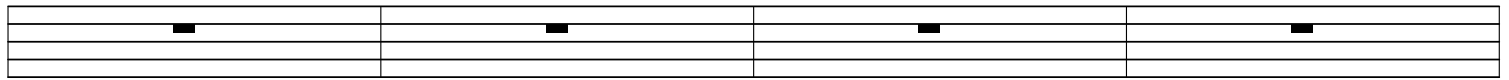


Bm

Bm/F#

F#7

G

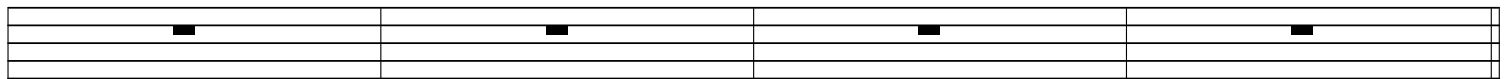


C#m/E

Bm/F#

F#

Bm

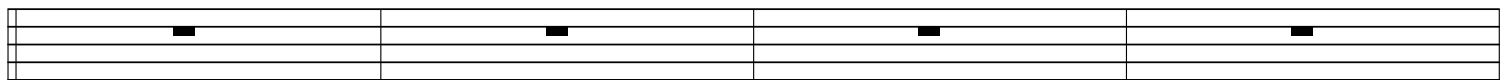


Bm/F#

F#7

Bm/F#

F#

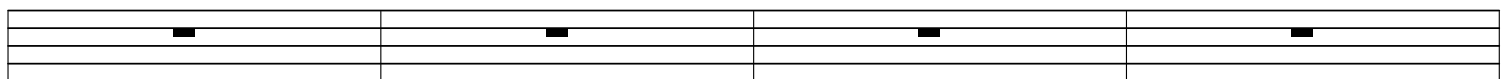


Bm/F#

F#7

Bm

F#

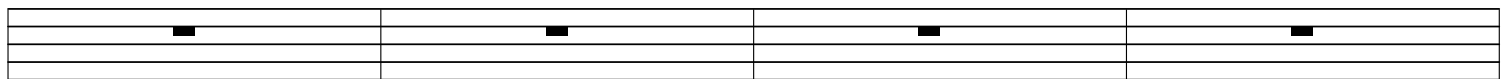


B7

Em

A7

D

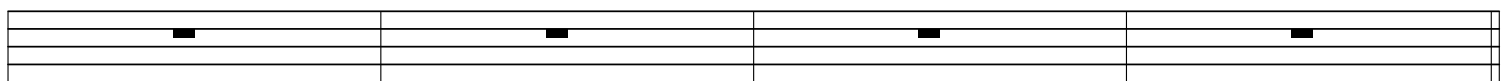


C/E

C/E

Fdim

F#



Bm

Bm/F#

F#7

Bm/F#



F# Bm/F# Em/G F#

Bm/D C#7 F#7 G

C#m/E Bm/F# F#7 F#<sup>7/E</sup> Bm

Bm/F# F#7 Bm/F# F#

Bm/F# F#7 Bm F#

B7 Em A7 D

C/E C/E Fdim F#

Bm Bm/F# F#7 Bm/F#

F# Bm/F# Em/G F#

Bm/D C#7 F#7 G

C#m/E                      Bm/F#                      F#7                      F#<sup>7/E</sup> Bm

A musical staff in bass clef with a key signature of one sharp (F#). The staff contains five chords, each represented by a vertical line with a chord symbol above it. The chords are: C#m/E (first measure), Bm/F# (second measure), F#7 (third measure), F#<sup>7/E</sup> (fourth measure), and Bm (fifth measure). The staff ends with a double bar line.