

1.-Prelude

6

10

14

18

22

26

16

46

51

56

61

66

Suite barroca nº 25 en Sol Major

2
71

76

81

86

91

96

1. 2.

2.-Bourée

10

18

26

34

42

50



58




66



74



82



1. 2.

ff

Detailed description: This block contains the first system of musical notation, measures 50 through 89. It consists of six staves of music in bass clef with a key signature of one sharp (F#). The first five staves (measures 50-81) are continuous. The sixth staff (measures 82-89) features a first ending (marked '1.') and a second ending (marked '2.'). The second ending concludes with a double bar line and a fermata, followed by the dynamic marking *ff* (fortissimo).

3.-Sarabande



6

10

14

18

22

Detailed description: This block contains the second system of musical notation, measures 1 through 21. It begins with a 3/4 time signature. The music is written in bass clef with a key signature of one sharp (F#). The notation includes various rhythmic patterns, including eighth and sixteenth notes, and rests. The piece concludes with a double bar line and a fermata at the end of measure 21.

Suite barroca n° 25 en Sol Major

4

26



30



34



38



42



4.-Menuet I



8



15



22



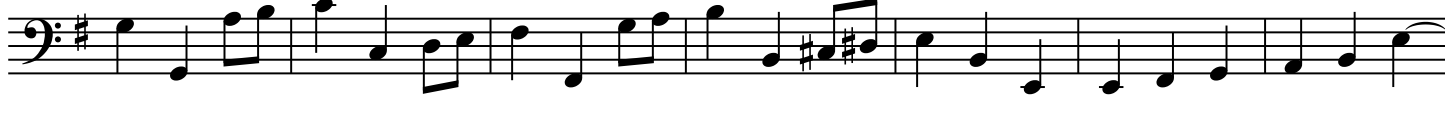
29



36



43



50



57

65

73

Musical notation for measures 50-73, including a repeat sign at the end.

5.-Menuet II



8

15

22

28

35

43

49

Musical notation for measures 1-49 of the Minuet II, including a repeat sign at measure 22.

Suite barroca nº 25 en Sol Major

6

55

1. 2.

6.-Gigue

