

A BANNER FROM THE NORTH

Composed for the National Academic Symphonic Band of Ukraine

Drum Set

♩ = 200

by ILIO VOLANTE

A

8 16 12

B

mf

f

C **D**

16 4

Copyright © 2018 by Ilio Volante - All Rights Reserved

A BANNER FROM THE NORTH - Ilio Volante - DRUM SET

(8 Beat Tempo)

♩ = 130

3

Fill...

rall.

Musical notation for section E, top staff. It features a series of four dotted half notes with a slur over them, followed by a 4/4 time signature, a 3-measure rest, and a fill-in section with diagonal lines.

mf

E

Musical notation for section E, middle staff. It shows a sequence of eighth notes with 'x' marks above them, followed by a 2-measure rest and a double bar line.

Musical notation for section E, bottom staff. It shows two 2-measure rests, each followed by a double bar line.

F

Musical notation for section F, top staff. It features a sequence of eighth notes with 'x' marks above them, followed by a fill-in section with diagonal lines.

G

Musical notation for section G, top staff. It features a sequence of eighth notes with 'x' marks above them.

Musical notation for section G, middle staff. It features a sequence of eighth notes with 'x' marks above them, followed by a fill-in section with diagonal lines.

H

Musical notation for section H, top staff. It features a sequence of eighth notes with 'x' marks above them, followed by a fill-in section with diagonal lines.

I

Musical notation for section I, top staff. It features a sequence of eighth notes with 'x' marks above them, followed by a fill-in section with diagonal lines.

J

Musical notation for section J, top staff. It features eighth notes with accents and 'x' marks above them, followed by two 3-measure rests and a double bar line.

f

♩ = 200

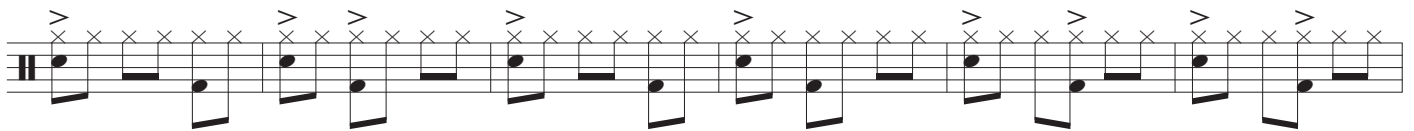
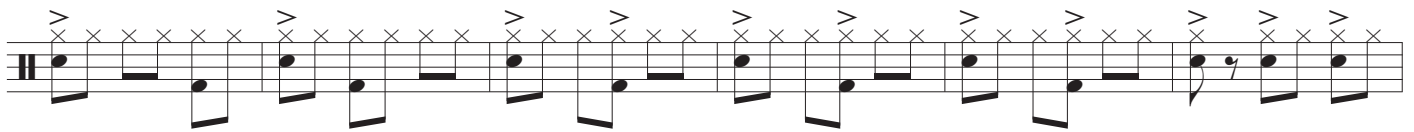
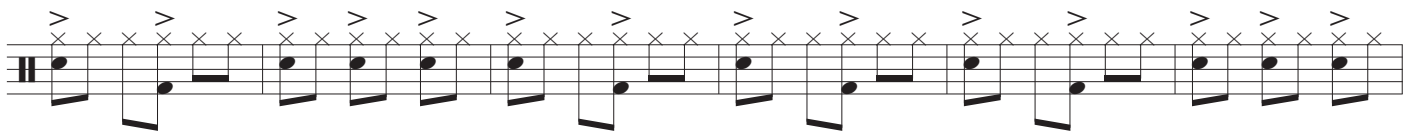
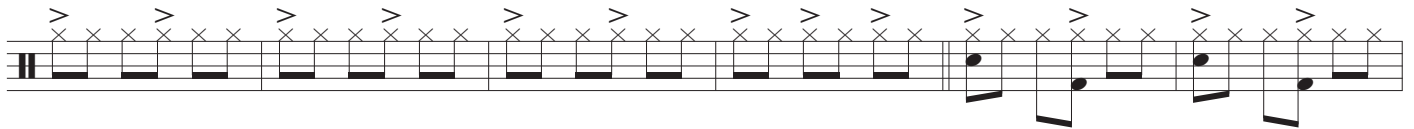
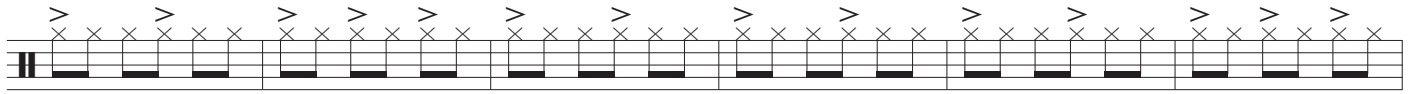
Musical notation for section J, bottom staff. It shows a 4-measure rest, a 3/4 time signature, and a 16-measure rest.

A BANNER FROM THE NORTH - Ilio Volante - DRUM SET

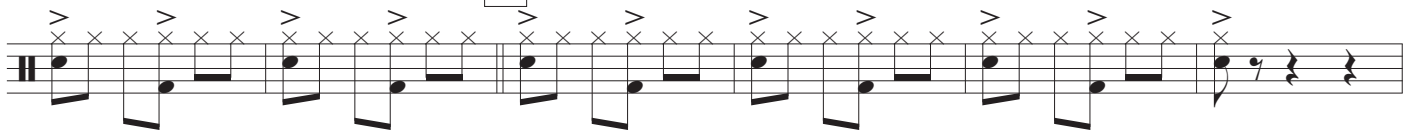
K



mf



L



M

