

Alto Sax. 1

# BRUMALIS

by ILIO VOLANTE

♩ = 110

A

Musical notation for section A, measures 1-4. The first measure is a whole rest. The second measure is a whole rest. The third measure contains a triplet of eighth notes with accents, followed by a quarter rest. The fourth measure is a whole rest. The dynamic marking *mf* is placed below the first triplet.

Musical notation for section B, measures 5-8. The first measure contains a triplet of eighth notes with accents, followed by a quarter rest. The second measure contains a quarter note with an accent, followed by a quarter rest. The third measure contains a triplet of eighth notes with accents, followed by a quarter rest. The fourth measure contains a triplet of eighth notes with accents, followed by a quarter rest. The dynamic marking *f* is placed below the first triplet.

Musical notation for section B, measures 9-12. The first measure contains a triplet of eighth notes with accents, followed by a quarter rest. The second measure contains a quarter note with an accent, followed by a quarter rest. The third measure contains a triplet of eighth notes with accents, followed by a quarter rest. The fourth measure contains a triplet of eighth notes with accents, followed by a quarter rest.

Musical notation for section C, measures 13-16. The first measure contains a triplet of eighth notes with accents, followed by a quarter rest. The second measure contains a quarter note with an accent, followed by a quarter rest. The third measure contains a triplet of eighth notes with accents, followed by a quarter rest. The fourth measure contains a triplet of eighth notes with accents, followed by a quarter rest. The dynamic marking *mp* is placed below the first triplet.

Musical notation for sections D and E, measures 17-20. The first measure is a whole rest. The second measure contains a half note with an accent. The third measure contains a half note with an accent. The fourth measure contains a quarter note with an accent, followed by a quarter rest. The dynamic marking *mf* is placed below the first measure.

Musical notation for section F, measures 21-24. The first measure is a whole rest. The second measure contains a half note with an accent. The third measure contains a half note with an accent. The fourth measure contains a quarter note with an accent, followed by a quarter rest. The dynamic marking *mf* is placed below the first measure.

Musical notation for section G, measures 25-28. The first measure contains a triplet of eighth notes with accents, followed by a quarter rest. The second measure contains a triplet of eighth notes with accents, followed by a quarter rest. The third measure contains a triplet of eighth notes with accents, followed by a quarter rest. The fourth measure contains a triplet of eighth notes with accents, followed by a quarter rest.

Musical notation for section G, measures 29-32. The first measure contains a triplet of eighth notes with accents, followed by a quarter rest. The second measure contains a triplet of eighth notes with accents, followed by a quarter rest. The third measure contains a triplet of eighth notes with accents, followed by a quarter rest. The fourth measure contains a triplet of eighth notes with accents, followed by a quarter rest.

BRUMALIS - Illo Volante - ALTO SAX 1

H

Musical staff H, first line. Starts with a dynamic marking of *f*. The staff contains a series of eighth notes with accents, followed by a triplet of eighth notes.

Musical staff H, second line. Features a first ending bracket labeled "1." and a second ending bracket labeled "2.". The staff includes a repeat sign and a first ending bracket labeled "I". It contains triplet markings and slurs.

Musical staff H, third line. Continues the melodic line with triplet markings and slurs.

Musical staff H, fourth line. Includes a first ending bracket labeled "J". The staff features triplet markings and slurs.

Musical staff H, fifth line. Starts with a dynamic marking of *ff*. Includes a tempo marking of  $\text{♩} = 140$ . The staff contains a first ending bracket labeled "K" and a second ending bracket labeled "2".

Musical staff H, sixth line. Starts with a dynamic marking of *mf*. The staff includes slurs and triplet markings.

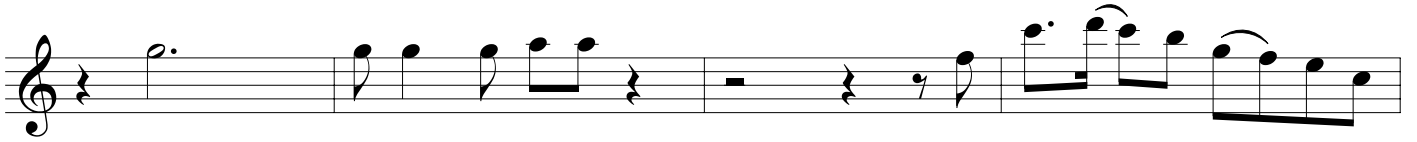
Musical staff H, seventh line. Includes a first ending bracket labeled "L" and a second ending bracket labeled "2". The staff features slurs and triplet markings.

Musical staff H, eighth line. Includes a first ending bracket labeled "M". The staff starts with a dynamic marking of *f* and contains slurs and triplet markings.

Musical staff H, ninth line. Continues the melodic line with slurs and triplet markings.

Musical staff H, tenth line. Starts with a dynamic marking of *rall.* and a tempo marking of  $\text{♩} = 110$ . The staff includes a first ending bracket labeled "N" and a second ending bracket labeled "2". It contains triplet markings and slurs.

BRUMALIS - Ilio Volante - ALTO SAX 1



O



P



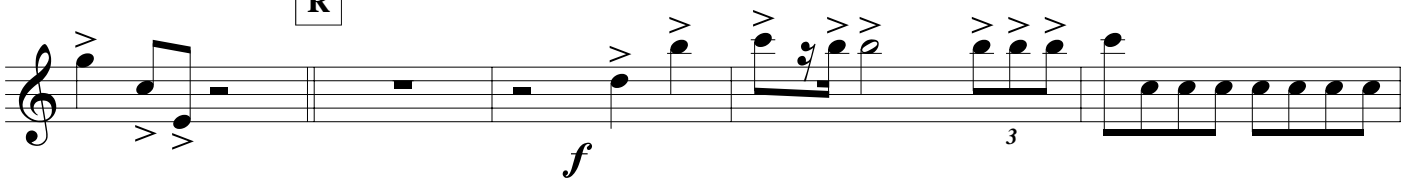
1.

2.

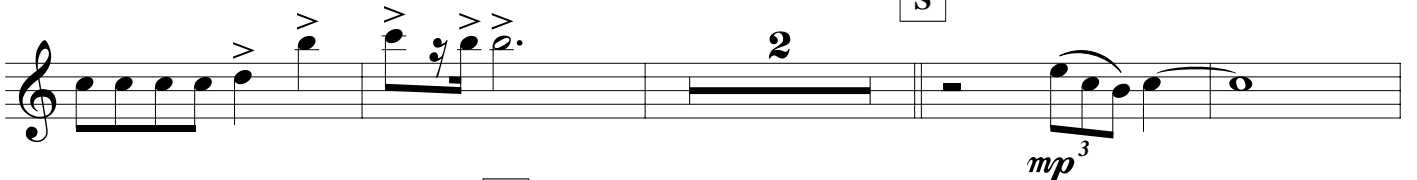
Q



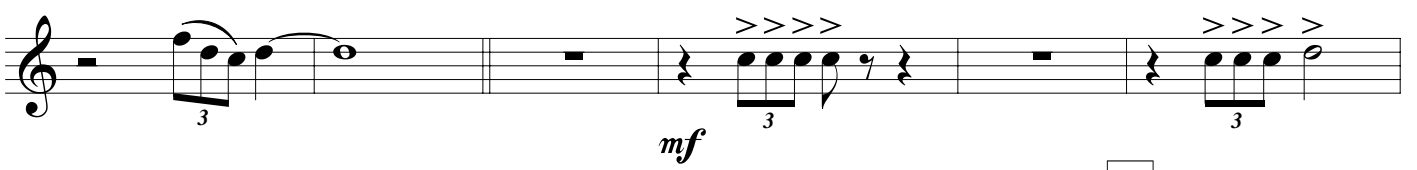
R



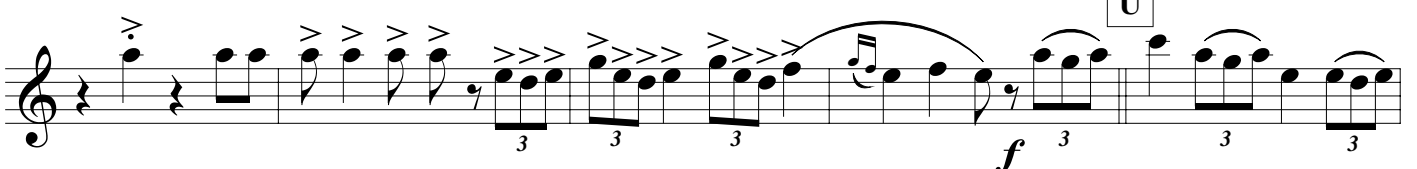
S



T



U



V

