

AN HOUR AND A HALF NORTH

For Trombone & Strings - Composed for the "Concertante Ensemble", Australia

Violino II

$\text{♩} = 112$
pizz.

A by ILIO VOLANTE

Staff A: Treble clef, C major, 4/4 time. Starts with a piano (*p*) pizzicato chord. The melody begins with a quarter note G4, followed by quarter notes A4, B4, and C5. It continues with eighth notes G4-A4, B4-C5, and a quarter note G4. The piece then transitions to arco, with a half note G4 and a half note C5. The staff ends with a repeat sign.

B

Staff B: Treble clef, C major, 4/4 time. Starts with a half rest, followed by a quarter note G4. The melody continues with quarter notes A4, B4, and C5. It then has a half note G4 and a half note C5. The staff ends with a repeat sign.

Staff C: Treble clef, C major, 4/4 time. Starts with a half note G4, followed by quarter notes A4, B4, and C5. It then has a half note G4 and a half note C5. The staff ends with a repeat sign.

C

Staff D: Treble clef, C major, 4/4 time. Starts with a half note G4, followed by quarter notes A4, B4, and C5. It then has a half note G4 and a half note C5. The staff ends with a repeat sign.

D

Staff E: Treble clef, C major, 4/4 time. Starts with a piano (*p*) pizzicato chord. The melody begins with a quarter note G4, followed by quarter notes A4, B4, and C5. It continues with eighth notes G4-A4, B4-C5, and a quarter note G4. The piece then transitions to arco, with a half note G4 and a half note C5. The staff ends with a repeat sign.

Staff F: Treble clef, C major, 4/4 time. Starts with a mezzo-forte (*mf*) pizzicato chord. The melody begins with a quarter note G4, followed by quarter notes A4, B4, and C5. It continues with eighth notes G4-A4, B4-C5, and a quarter note G4. The piece then transitions to arco, with a half note G4 and a half note C5. The staff ends with a repeat sign.

Staff G: Treble clef, C major, 4/4 time. Starts with a mezzo-forte (*mf*) pizzicato chord. The melody begins with a quarter note G4, followed by quarter notes A4, B4, and C5. It continues with eighth notes G4-A4, B4-C5, and a quarter note G4. The piece then transitions to arco, with a half note G4 and a half note C5. The staff ends with a repeat sign.

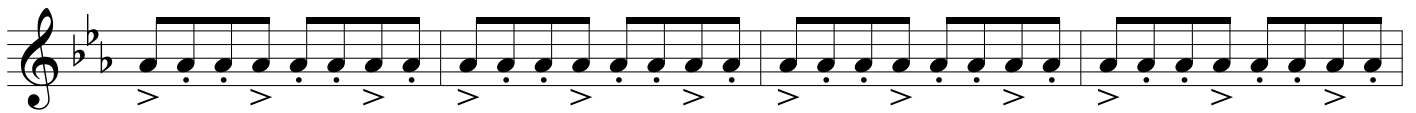
E

Staff H: Treble clef, C major, 4/4 time. Starts with a mezzo-piano (*mp*) pizzicato chord. The melody begins with a quarter note G4, followed by quarter notes A4, B4, and C5. It continues with eighth notes G4-A4, B4-C5, and a quarter note G4. The piece then transitions to arco, with a half note G4 and a half note C5. The staff ends with a repeat sign.

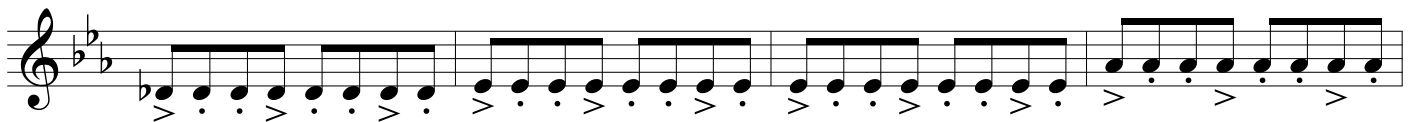
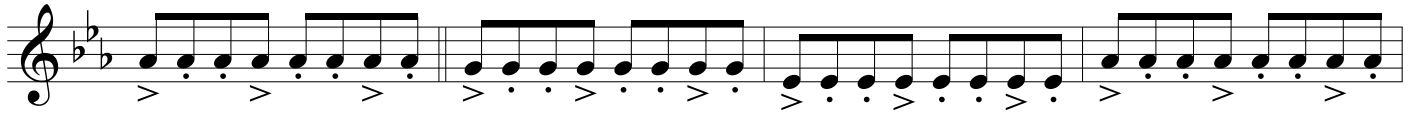
F

Staff I: Treble clef, C major, 4/4 time. Starts with a forte (*f*) arco chord. The melody begins with a quarter note G4, followed by quarter notes A4, B4, and C5. It continues with eighth notes G4-A4, B4-C5, and a quarter note G4. The piece then transitions to arco, with a half note G4 and a half note C5. The staff ends with a repeat sign.

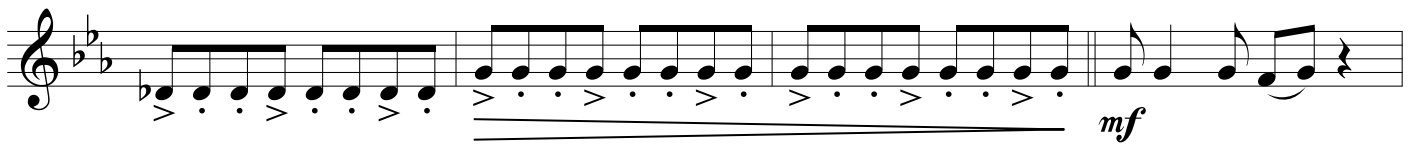
AN HOUR AND A HALF NORTH - Ilio Volante - VIOLIN 2



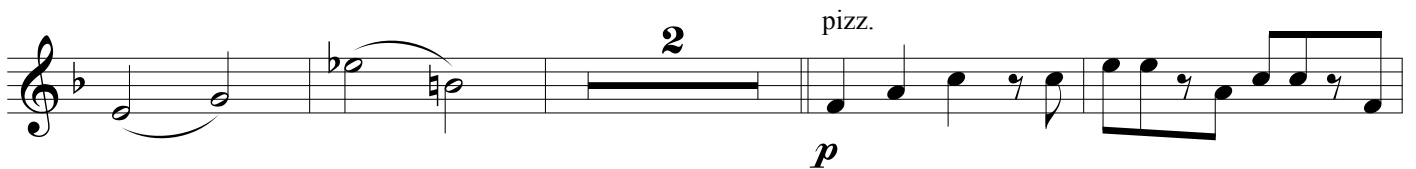
G



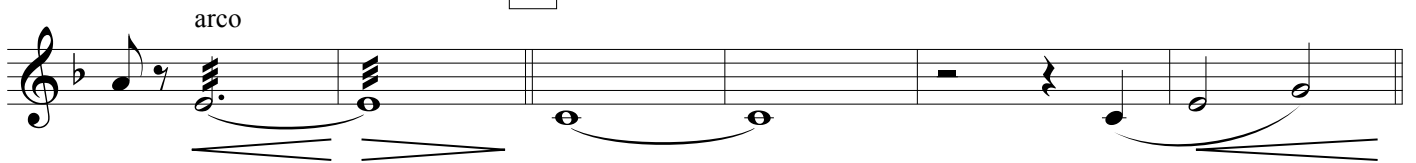
H



I



J



K

