

# MISTICARTE

Concierto Para Saxofón y Banda

IV Congreso Nacional de Directores de Banda

Valencia (España), 7 y 8 de Marzo 2015

Trombone 1

by ILIO VOLANTE

♩ = 100

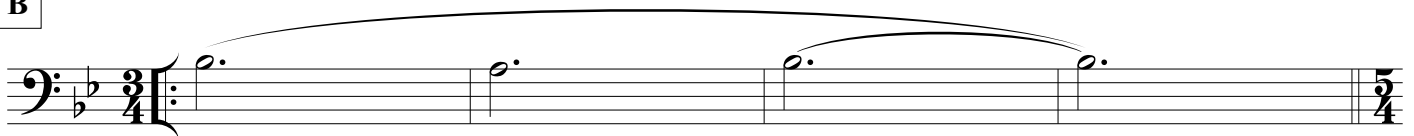
A



*pp*



B



*p*

C



*mp*



D



*mf*



*mp*



♩ = 160



*mf*

*mp*

Copyright © 2015 by Ilio Volante - All Rights Reserved

MISTICARTE - Ilio Volante - TROMBONE 1

E

Staff E: Bass clef, key signature of one flat. Starts with a whole rest. A triplet of eighth notes is followed by a quarter note with an accent. The staff continues with eighth and quarter notes. Dynamics: *mf*, *mp*.

F

Staff F: Bass clef, key signature of one flat. Starts with a quarter note, followed by a whole rest. Then a series of eighth notes. Dynamics: *p*.

Staff continuation: Bass clef, key signature of one flat. Continues with eighth notes. Dynamics: *mf*.

G

Staff G: Bass clef, key signature of one flat. Features a half note with a slur, followed by quarter notes and a half note with a slur. Dynamics: *mf*.

H

Staff H: Bass clef, key signature of one flat. Features eighth notes with accents. Dynamics: *mf*.

I

Staff I: Bass clef, key signature of one flat. Features eighth notes with accents, a triplet of eighth notes, and a half note. Dynamics: *mf*.

in 4  
♩ = 80

J

Staff J: Bass clef, key signature of one flat. Features a half note with a slur. Dynamics: *p*.

Staff continuation: Bass clef, key signature of one flat. Features a half note with a slur.

♩ = 160

Staff continuation: Bass clef, key signature of one flat. Features eighth notes with accents. Dynamics: *mp*, *mf*.

K

Staff K: Bass clef, key signature of one flat. Features a triplet of eighth notes, a quarter note with an accent, another triplet of eighth notes, and a half note with an accent. Dynamics: *f*, *ff*.