

# SWINGING WINDS

For Soprano Sax, Alto Sax Soloists & Wind Orchestra

Sax Soprano (Parte Oboe)

(Soprano Sax - Oboe Part)

Swing! ♩ = ♩<sup>3</sup> ♩

♩ = 180

by ILIO VOLANTE

First staff of music, starting with a treble clef and common time signature. It begins with a dynamic marking of *f*. The melody consists of quarter notes and eighth notes, with a triplet of eighth notes at the end of the first measure.

Second staff of music, continuing the melody from the first staff. It features a triplet of eighth notes at the end of the first measure.

Third staff of music, containing a first ending bracket labeled 'A' and a repeat sign. The music ends with a double bar line and the number '12' above it.

Section B begins with a treble clef and a 7/8 time signature. It starts with a dynamic marking of *mf* and includes a triplet of eighth notes.

Continuation of Section B, featuring a long melodic line with various rhythmic patterns.

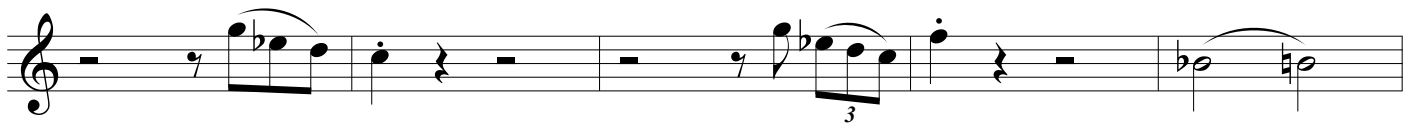
Continuation of Section B, ending with a double bar line.

Section C begins with a treble clef and a common time signature. It starts with a dynamic marking of *p* and includes a flat symbol (b) above a note.

Continuation of Section C, featuring two triplet markings and a first ending bracket labeled '1.' and '2.'.

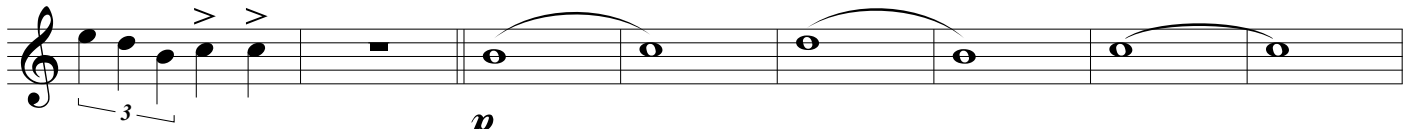
Final staff of music, starting with a dynamic marking of *f* and ending with a triplet of eighth notes.

SWINGING WINDS - Ilio Volante - SOPRANO SAX (OBOE PART)

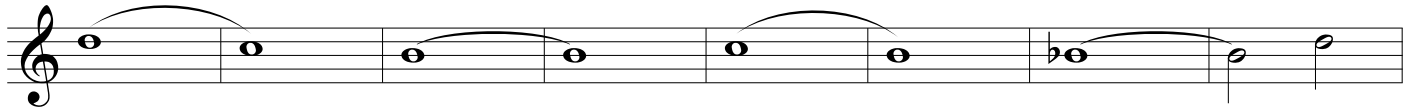


Classic Reading

♩ = 90

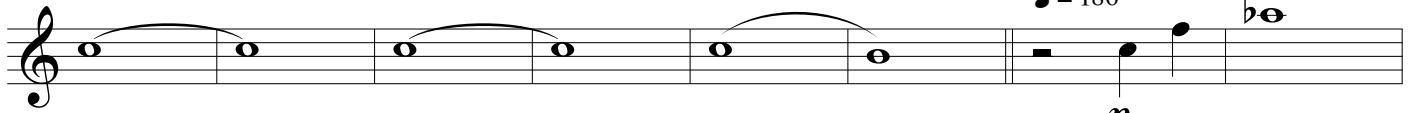


*p*

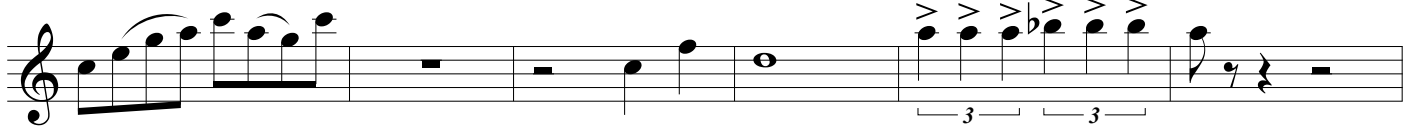


Swing! ♩ = ♩<sup>3</sup>

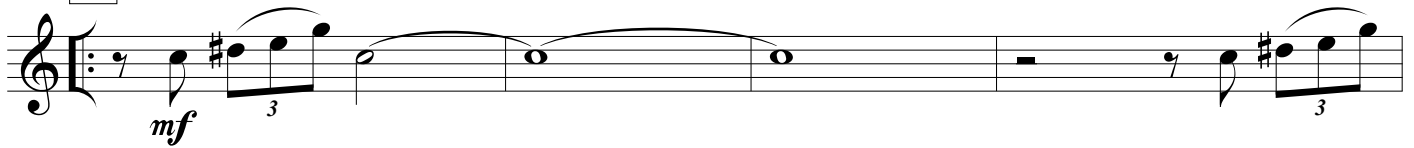
♩ = 180



*p*



D



*mf*

