

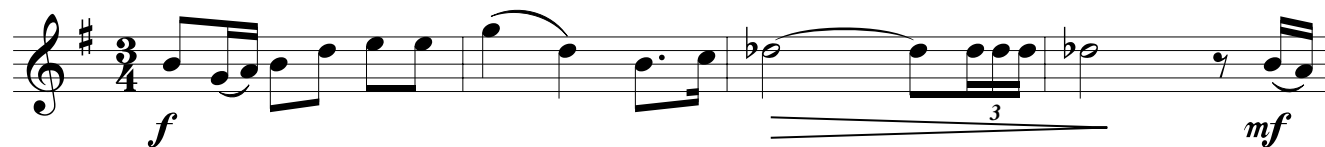
UDIENZA PRELIMINARE

For Wind Quartet

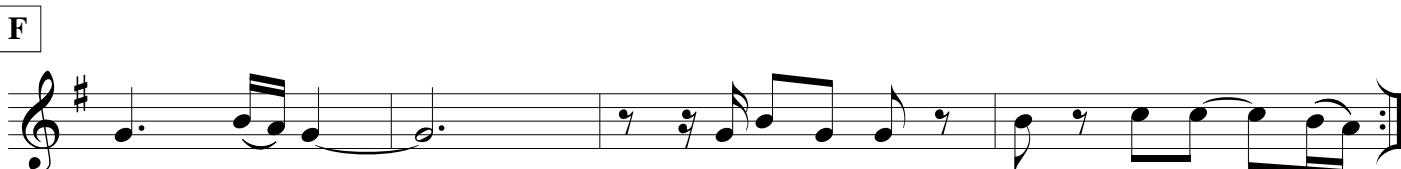
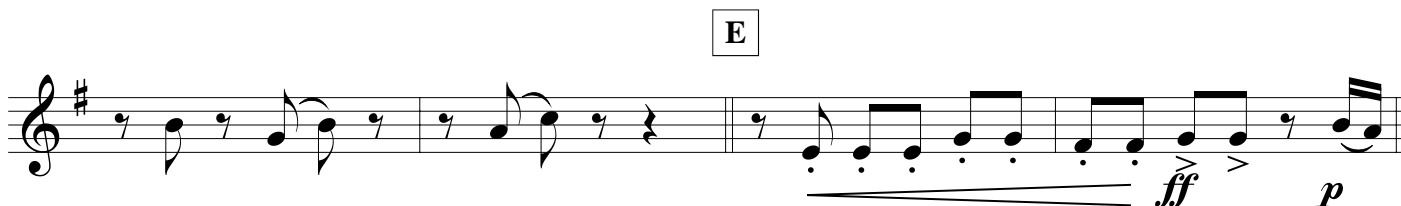
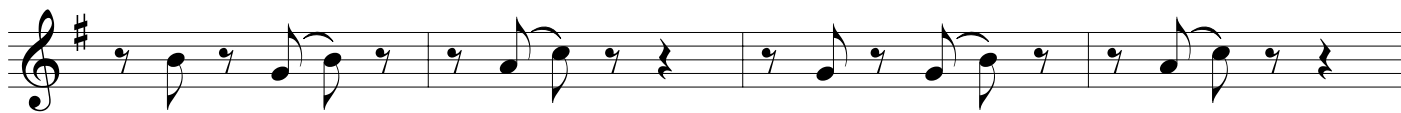
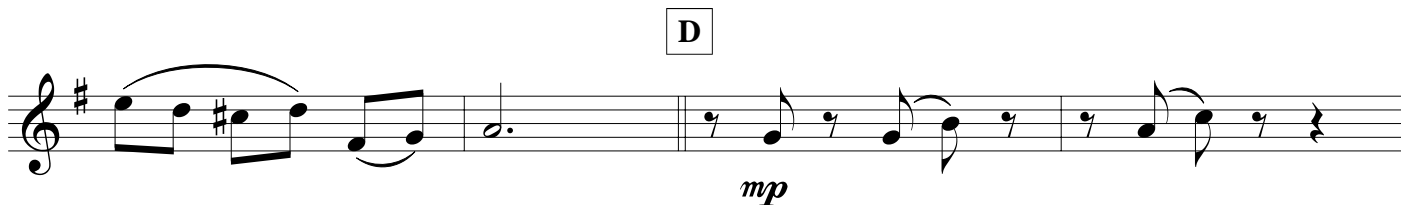
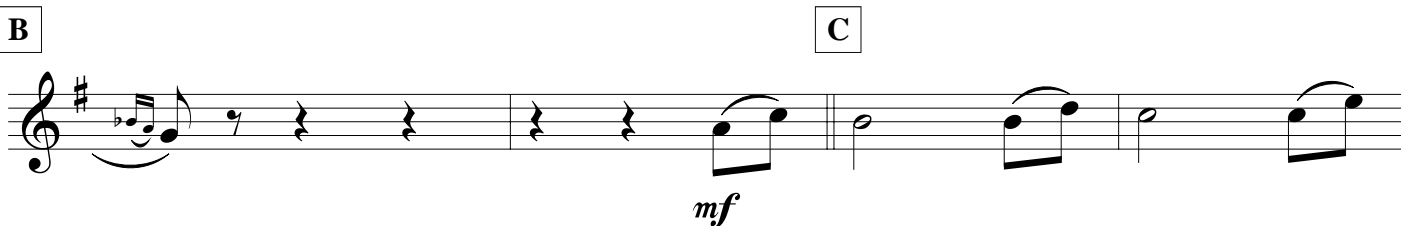
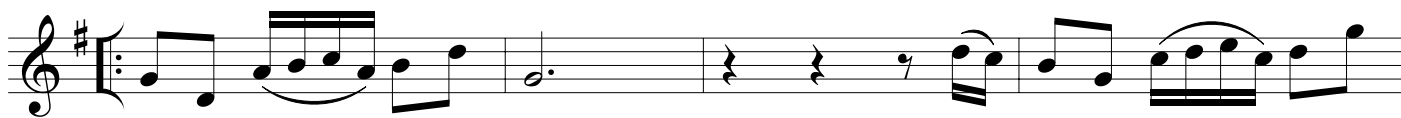
Trumpet in B \flat

$\text{♩} = 100$

by ILIO VOLANTE



A



UDIENZA PRELIMINARE - Ilio Volante - TRUMPET in Bb

G

Musical notation for section G, featuring a treble clef, a key signature of one sharp (F#), and a 4/4 time signature. The melody begins with a half note G4, followed by quarter notes A4, B4, and C5. A dynamic marking of *mf* is present. The section concludes with a double bar line and a key signature change to two flats (Bb).

H

Musical notation for section H, featuring a treble clef, a key signature of two flats (Bb), and a 4/4 time signature. The melody consists of eighth notes, starting with a dynamic marking of *p*.

Musical notation for section H continuation, featuring a treble clef, a key signature of two flats (Bb), and a 4/4 time signature. It includes a triplet of eighth notes and ends with a double bar line.

I

Musical notation for section I, featuring a treble clef, a key signature of two flats (Bb), and a 4/4 time signature. The melody is marked with *mf* and includes a triplet of eighth notes.

Musical notation for section I continuation, featuring a treble clef, a key signature of two flats (Bb), and a 4/4 time signature. It includes a triplet of eighth notes and ends with a double bar line.

J

Musical notation for section J, featuring a treble clef, a key signature of two flats (Bb), and a 4/4 time signature. The melody is marked with *p*, *mf*, and *p*.

K

Musical notation for section K, featuring a treble clef, a key signature of two flats (Bb), and a 3/4 time signature. The melody is marked with *mf* and includes a key signature change to one sharp (F#).

Musical notation for section K continuation, featuring a treble clef, a key signature of one sharp (F#), and a 4/4 time signature. The melody is marked with *f* and includes a dynamic marking of *ff*.

Musical notation for section K continuation, featuring a treble clef, a key signature of one sharp (F#), and a 4/4 time signature. The melody is marked with *f* and *ff*, and includes accents.