

VALSAS

(1-10)

M. Welupek

Valsa 1

M. Welupek

Flute

19

28

32

37

40

45

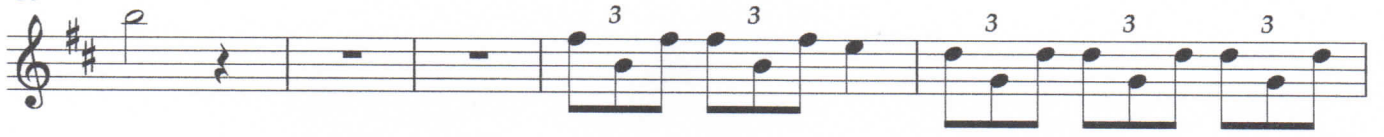
63

77

83



88



93



99



107



Valsa 2

M. Welupek

$\text{♩} = 70$

8

13

18

23

28

33

39

45

52

Valsa 3

M. Welupek

Flute

$\text{♩} = 150$
30

38

47

55

62

67

72

78

82

a

f

3

3

87

3 3 3 3 3 3

♩ = 170

94

4

♩ = 150

Valsa 4

M. Welupek

Flute

11

19

25

30

35

42

57

64

70

tr

tr

6

Valsa 5

M. Welupek

Flute

$\text{♩} = 80$

Re p.

14

20

27

32

38

42

47

53

$\text{♩} = 85$

57



60



Rall.....

Valsa 6

M. Welupek

Flute

25

31

38

46

53

62

69

75

20

19

$\text{♩} = 130$

$\text{♩} = 120$ $\text{♩} = 130$

tr

1. 2.

99

Musical staff for measure 99, featuring a treble clef, a key signature of two sharps (F# and C#), and a sequence of notes: G4, A4, B4, C5, followed by a whole rest, then D5, E5, F#5, G5, A5, B5, C6, and D6.

107

$\bullet = 125$ $\bullet = 120$ $\bullet = 110 = 95$

Musical staff for measure 107, featuring a treble clef, a key signature of two sharps (F# and C#), and a sequence of notes: D5, E5, F#5, G5, A5, B5, C6, D6, E6, F#6, G6, A6, B6, C7, D7, E7, F#7, G7, A7, B7, C8, followed by a whole rest and a final note G7.

115

$\bullet = 50$

Musical staff for measure 115, featuring a treble clef, a key signature of two sharps (F# and C#), and a single note G4.

Valsa 7

M. Welupek

Flute

13

19

26

37

41

45

57

62

1. 2. *tr*

6

7

6

7

8

9

10

11

12

13

14

15

16

17

18

19

20

21

22

23

24

25

26

27

28

29

30

31

32

33

34

35

36

37

38

39

40

41

42

43

44

45

46

47

48

49

50

51

52

53

54

55

56

57

58

59

60

61

62

63

64

65

66

67

68

69

70

71

72

73

74

75

76

77

78

79

80

81

82

83

84

85

86

87

88

89

90

91

92

93

94

95

96

97

98

99

100

Valsa 8

M. Welupek

Flute

22

29

50

55

61

68

Fl.

Fl.

Fl.

Fl.

Fl.

Fl.

Fl.

Valsa 9

M. Welupek

Flute

$\bullet = 120$

6

Fl.

12

Fl.

20

Fl.

$\bullet = 75$

34

Fl.

51

Fl.

58

Fl.

62

Fl.

68

Fl.

$\bullet = 70$

Valsa 10

M. Welupek

♩ = 90

Flute

7

Fl.

13

Fl.

20

Fl.

25

Fl.

31

Fl.

39

Fl.

46

Fl.

53

Fl.