



**Artist page :** <https://www.free-scores.com/Download-PDF-Sheet-Music-farrierpete.htm>

### About the piece

**Title:**  
**Copyright:** © CC-BY-NC-SA 4.0  
**Style:** Jazz  
**Comment:** The Crash at Crush was a one-day publicity stunt in the U.S. state of Texas that took place on September 15, 1896, in which two unmanned locomotives were crashed into each other head-on at high speed. William George Crush, general passenger agent of the Missouri–Kansas–Texas Railroad, conceived the idea in order to demonstrate a staged train wreck as a public spectacle. No admission was charged, and train fares to the crash site – called Crush, s... (more online)

on [free-scores.com](https://www.free-scores.com)

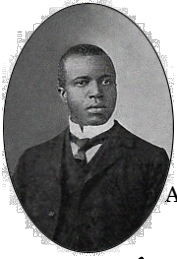


This work is not Public Domain. You must contact the artist for any use outside the private area.

**Prohibited distribution on other website.**



- share your interpretation
- comment
- contact the artist



# Great Crush Collision (1896)

March, dedicated to the Missouri-Kansas-Texas Railway

by **Scott Joplin**,

King of Ragtime, Composer of "The Entertainer" and "Maple Leaf Rag"

Arr. 2021-05-10 FarrierPete

Introduction.

$\text{♩} = 124$

Piano

**Tempo di Marcia**

Pno.

Pno.

Pno.

Pno.

Pno.

Piano score system 1 (measures 31-35). The system is marked with a first ending bracket (1.) and includes dynamic markings such as *mf* and *ff*. The notation features complex chords and melodic lines in both hands.

Piano score system 2 (measures 36-40). This system continues the musical piece with various articulations and dynamic markings.

Piano score system 3 (measures 41-45). The system includes slurs and dynamic markings, showing a continuation of the complex harmonic texture.

Piano score system 4 (measures 46-50). This system features intricate chordal structures and melodic fragments in both staves.

Piano score system 5 (measures 51-55). This system is marked with first and second endings (1. and 2.) and includes dynamic markings like *mf* and *ff*.

Piano score system 6 (measures 56-60). The final system on the page, featuring complex chordal textures and melodic lines.

63

68

74

*The noise of the trains while running at the rate of sixty miles per hour, Whistling for the crossing,*

79

*The noise of the trains*

82

*Whistle before the collision*

*The collision (two additional measures inserted.)*

87

93

Pno.

99

Pno.

1.

2. *(Reverb)*

# The Great Railway Crash at Crush, Texas, 1896

see: [https://en.wikipedia.org/wiki/Crash\\_at\\_Crush](https://en.wikipedia.org/wiki/Crash_at_Crush) Pictures: Wikimedia Commons

