



# Bernard Dewagtere

France, SIN LE NOBLE

## O Holy Night (Cantique de Noël) Adam, Adolphe Charles

### About the artist

Doctor in musicology, conductor and composer.

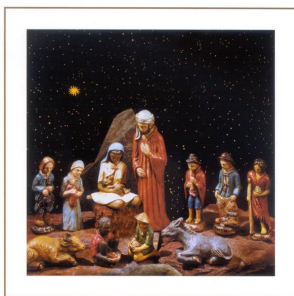
Compositions and arrangements from all eras, in all styles or musical genres and for any instrument or vocal training.

**Qualification:** PhD Musicology

**Associate:** SACEM - IPI code of the artist : 342990

**Artist page :** <https://www.free-scores.com/Download-PDF-Sheet-Music-bernard-dewagtere.htm>

### About the piece



**Title:** O Holy Night [Cantique de Noël]

**Composer:** Adam, Adolphe Charles

**Arranger:** Dewagtere, Bernard

**Copyright:** Copyright © Dewagtere, Bernard

**Instrumentation:** Alto recorder, piano or organ

**Style:** Christmas - Carols

**Comment:** "O Holy Night" ("Cantique de Noël") is a well-known Christmas carol composed by Adolphe Adam in 1847 to the French poem "Minuit, chrétiens" (Midnight, Christians) by Placide Cappeau (1808?1877), a wine merchant and poet, who had been asked by a parish priest to write a Christmas poem.[1] Unitarian minister John Sullivan Dwight,[2] editor of Dwight's Journal of Music, created a singing edition based o... (more online)

### Bernard Dewagtere on [free-scores.com](https://www.free-scores.com)

#### LICENSE

This sheet music requires an authorization  
- for public performances  
- for use by teachers

**Buy this license at :**

<https://www.free-scores.com/licence-partition-uk.php?partition=37819>



- listen to the audio
- share your interpretation
- comment
- pay the licence
- contact the artist

Prohibited distribution on other website.

# Minuit, chrétiens - O Holy Night

*Cantique de Noël*

Adolphe Adam (1847)

Arr. : Bernard Dewagtere

Recorder  
A. or B.

Piano

Musical notation for Recorder A. or B. and Piano, measures 1-3. The Recorder part is in treble clef with a key signature of one sharp (F#) and a time signature of 12/8. The Piano part is in grand staff with a key signature of one sharp (F#) and a time signature of 12/8. The Recorder part begins with a whole rest, followed by a quarter rest, then a quarter note G4, a quarter note A4, and a quarter note B4. The Piano part features a steady eighth-note accompaniment in the right hand and a bass line in the left hand.

4

Pno

Musical notation for Recorder A. or B. and Piano, measures 4-6. The Recorder part continues with a quarter note C5, a quarter note D5, and a quarter note E5. The Piano part continues with the eighth-note accompaniment and bass line.

7

Pno

Musical notation for Recorder A. or B. and Piano, measures 7-9. The Recorder part concludes with a quarter note F#5, a quarter note G5, and a quarter note A5. The Piano part continues with the eighth-note accompaniment and bass line.

Minuit, chrétiens - O Holy Night

2  
10

Piano accompaniment for measures 10-12. The score is in G major (one sharp) and 2/4 time. The vocal line (top staff) features a melodic line with a slur over measures 10-12. The piano accompaniment (bottom two staves) consists of a treble clef staff with eighth-note patterns and a bass clef staff with a simple harmonic accompaniment of quarter notes.

13

Piano accompaniment for measures 13-15. The score is in G major (one sharp) and 2/4 time. The vocal line (top staff) continues the melodic line with a slur. The piano accompaniment (bottom two staves) features a treble clef staff with eighth-note patterns and a bass clef staff with a simple harmonic accompaniment. Measure 14 includes a triplet of eighth notes in the bass line.

16

Piano accompaniment for measures 16-18. The score is in G major (one sharp) and 2/4 time. The vocal line (top staff) continues the melodic line with a slur. The piano accompaniment (bottom two staves) features a treble clef staff with eighth-note patterns and a bass clef staff with a simple harmonic accompaniment. Measure 17 includes a triplet of eighth notes in the bass line.

Minuit, chrétiens - O Holy Night

19

Pno

23

Pno

27

Pno