



# Bernard Dewagtere

France, SIN LE NOBLE

## O Holy Night (Cantique de Noël) Adam, Adolphe Charles

### About the artist

Doctor in musicology, conductor and composer.

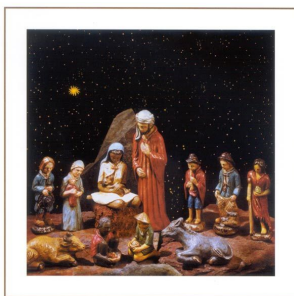
Compositions and arrangements from all eras, in all styles or musical genres and for any instrument or vocal training.

**Qualification:** PhD Musicology

**Associate:** SACEM - IPI code of the artist : 342990

**Artist page :** <https://www.free-scores.com/Download-PDF-Sheet-Music-bernard-dewagtere.htm>

### About the piece



**Title:** O Holy Night [Cantique de Noël]

**Composer:** Adam, Adolphe Charles

**Arranger:** Dewagtere, Bernard

**Copyright:** Copyright © Dewagtere, Bernard

**Instrumentation:** Soprano saxophone, piano or organ

**Style:** Christmas - Carols

**Comment:** "O Holy Night" ("Cantique de Noël") is a well-known Christmas carol composed by Adolphe Adam in 1847 to the French poem "Minuit, chrétiens" (Midnight, Christians) by Placide Cappeau (1808?1877), a wine merchant and poet, who had been asked by a parish priest to write a Christmas poem.[1] Unitarian minister John Sullivan Dwight,[2] editor of Dwight's Journal of Music, created a singing edition based o... (more online)

### Bernard Dewagtere on [free-scores.com](https://www.free-scores.com)

#### LICENSE

This sheet music requires an authorization  
- for public performances  
- for use by teachers

**Buy this license at :**

<https://www.free-scores.com/licence-partition-uk.php?partition=37823>



- listen to the audio
- share your interpretation
- comment
- pay the licence
- contact the artist

Prohibited distribution on other website.

# Minuit, chrétiens - O Holy Night

*Cantique de Noël*

Adolphe Adam (1847)

Arr. : Bernard Dewagtere

Soprano  
Saxophone

Musical score for Soprano Saxophone and Piano, measures 1-3. The Soprano Saxophone part is in treble clef with a key signature of one sharp (F#) and a time signature of 12/8. The Piano part is in bass clef with a key signature of one flat (Bb) and a time signature of 12/8. The Soprano Saxophone part begins with a whole rest, followed by a quarter rest, then a quarter note G4, a quarter note A4, a quarter note B4, and a quarter note C5. The Piano part begins with a quarter rest, followed by a quarter note G2, a quarter note A2, a quarter note B2, and a quarter note C3. The first measure is followed by a repeat sign. The second measure of the Soprano Saxophone part is a half note G4, a half note A4, and a half note B4. The Piano part continues with a quarter note G2, a quarter note A2, a quarter note B2, and a quarter note C3. The third measure of the Soprano Saxophone part is a quarter note C5, a quarter note B4, a quarter note A4, and a quarter note G4. The Piano part continues with a quarter note G2, a quarter note A2, a quarter note B2, and a quarter note C3.

Cl. (Sib)

Musical score for Clarinet in Bb, measures 4-6. The Clarinet part is in treble clef with a key signature of one sharp (F#) and a time signature of 12/8. The part begins with a quarter rest, followed by a quarter note G4, a quarter note A4, a quarter note B4, and a quarter note C5. The first measure is followed by a repeat sign. The second measure of the Clarinet part is a half note G4, a half note A4, and a half note B4. The third measure of the Clarinet part is a quarter note C5, a quarter note B4, a quarter note A4, and a quarter note G4.

Pno

Musical score for Piano, measures 4-6. The Piano part is in bass clef with a key signature of one flat (Bb) and a time signature of 12/8. The part begins with a quarter rest, followed by a quarter note G2, a quarter note A2, a quarter note B2, and a quarter note C3. The first measure is followed by a repeat sign. The second measure of the Piano part is a quarter note G2, a quarter note A2, a quarter note B2, and a quarter note C3. The third measure of the Piano part is a quarter note G2, a quarter note A2, a quarter note B2, and a quarter note C3.

Cl. (Sib)

Musical score for Clarinet in Bb, measures 7-9. The Clarinet part is in treble clef with a key signature of one sharp (F#) and a time signature of 12/8. The part begins with a quarter rest, followed by a quarter note G4, a quarter note A4, a quarter note B4, and a quarter note C5. The first measure is followed by a repeat sign. The second measure of the Clarinet part is a half note G4, a half note A4, and a half note B4. The third measure of the Clarinet part is a quarter note C5, a quarter note B4, a quarter note A4, and a quarter note G4.

Pno

Musical score for Piano, measures 7-9. The Piano part is in bass clef with a key signature of one flat (Bb) and a time signature of 12/8. The part begins with a quarter rest, followed by a quarter note G2, a quarter note A2, a quarter note B2, and a quarter note C3. The first measure is followed by a repeat sign. The second measure of the Piano part is a quarter note G2, a quarter note A2, a quarter note B2, and a quarter note C3. The third measure of the Piano part is a quarter note G2, a quarter note A2, a quarter note B2, and a quarter note C3.

Minuit, chrétiens - O Holy Night

Cl. (Sib)  $\frac{2}{10}$

Pno

This system contains measures 10, 11, and 12. The Clarinet part (top staff) features a melodic line with a key signature of one sharp (F#) and a 2/10 time signature. The melody consists of dotted half notes and quarter notes, with a fermata over the first two measures. The Piano accompaniment (bottom staves) features a steady eighth-note pattern in the right hand and a bass line of dotted half notes in the left hand.

Cl. (Sib)

Pno

This system contains measures 13, 14, and 15. The Clarinet part continues the melodic line with a fermata over measures 13 and 14. The Piano accompaniment includes a complex texture with chords and triplets in the right hand, and a steady eighth-note pattern in the left hand. Measure numbers 13, 14, and 15 are indicated at the start of their respective staves.

Cl. (Sib)

Pno

This system contains measures 16, 17, and 18. The Clarinet part continues the melodic line with a fermata over measures 16 and 17. The Piano accompaniment features a complex texture with chords and triplets in the right hand, and a steady eighth-note pattern in the left hand. Measure numbers 16, 17, and 18 are indicated at the start of their respective staves.

Minuit, chrétiens - O Holy Night

Cl. (Sib)

Pno

Cl. (Sib)

Pno

Cl. (Sib)

Pno