

Canon puzzle

Ale Baldus (1999 - il più tardi possibile)

$\text{♩} = 80$

Musical score for Violini 1, Violini 2, Viole, and Violoncelli. The score is in 4/4 time and B-flat major. Violini 1 has a complex melodic line with many sixteenth notes. Violini 2, Viole, and Violoncelli have rests in the first two measures, then enter in the third measure with a simple harmonic accompaniment.

Musical score for VI. 1, VI. 2, Vla., and Vcs. starting at measure 5. VI. 1 has a complex melodic line with many sixteenth notes. VI. 2 has a simple harmonic accompaniment. Vla. and Vcs. have rests in the first two measures, then enter in the third measure with a simple harmonic accompaniment.

Musical score for VI. 1, VI. 2, Vla., and Vcs. starting at measure 10. VI. 1 has a simple harmonic accompaniment. VI. 2 has a complex melodic line with many sixteenth notes. Vla. and Vcs. have rests in the first two measures, then enter in the third measure with a simple harmonic accompaniment.

16

VI. 1

VI. 2

Vla.

Vcs.

This system contains measures 16 through 19. The first violin (VI. 1) part features a complex, fast-moving melodic line with many sixteenth notes. The second violin (VI. 2) part has a more melodic line with some slurs. The viola (Vla.) part consists of a few chords and single notes. The cello (Vcs.) part has a simple bass line with quarter and eighth notes.

20

VI. 1

VI. 2

Vla.

Vcs.

This system contains measures 20 through 24. The first violin (VI. 1) part continues with its intricate melodic pattern. The second violin (VI. 2) part has a more active line with some slurs. The viola (Vla.) part has a steady eighth-note accompaniment. The cello (Vcs.) part has a simple bass line with quarter notes.

25

VI. 1

VI. 2

Vla.

Vcs.

This system contains measures 25 through 29. The first violin (VI. 1) part continues with its intricate melodic pattern. The second violin (VI. 2) part has a more active line with some slurs. The viola (Vla.) part has a steady eighth-note accompaniment. The cello (Vcs.) part has a simple bass line with quarter notes.

Violini 1

Canon puzzle

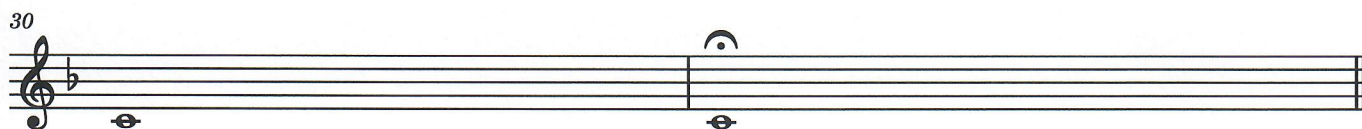
Ale Baldo (1999 - il più tardi possibile)



Violini 2

Canon puzzle

Ale Baldus (1999 - il più tardi possibile)



Viola

Canon puzzle

Ale Baldus (1999 - il più tardi possibile)

♩ = 80
6



12



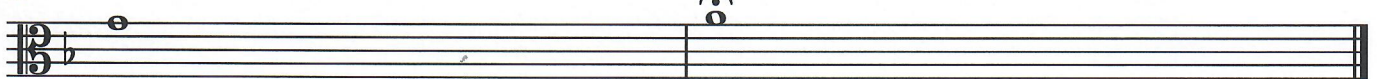
18



24



30



Violoncelli

Canon puzzle

Ale Baldus (1999 - il più tardi possibile)

$\text{♩} = 80$
14



20



26

