



Gustav Anderson

United States (USA), Norwalk

AN INVITE

About the artist

A ROSE BY ANY OTHER NAME.....Hello...in order to keep my sheet music separate from my MP3 music on Freescores I, LEONARD ANDERSON, have established this second account...GUSTAV is my middle name....to hear my MP3's click on LEONARD ANDERSON under INTERPRETER

Qualification: BA, MA, Ed.D, Ph.D in music and education

Artist page : <https://www.free-scores.com/Download-PDF-Sheet-Music-gustavanderson.htm>

About the piece



Title: AN INVITE
Composer: Anderson, Gustav
Arranger: Anderson, Gustav
Copyright: Copyright © Gustav Anderson
Publisher: Anderson, Gustav
Instrumentation: Lead sheet
Style: Latin
Comment: As requested

Gustav Anderson on [free-scores.com](https://www.free-scores.com)



- listen to the audio
- share your interpretation
- comment
- contact the artist

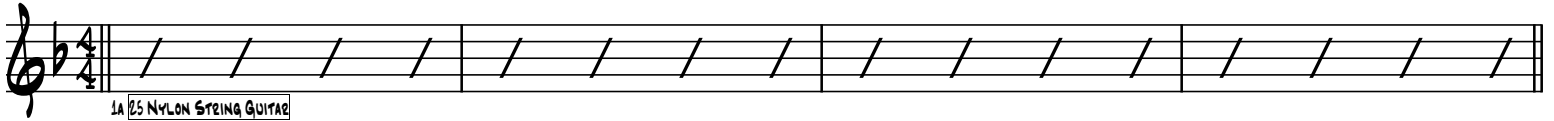
INVITATION

D-6

B \flat 7

E \flat 7

A7



D-9



G13

C13(b9)

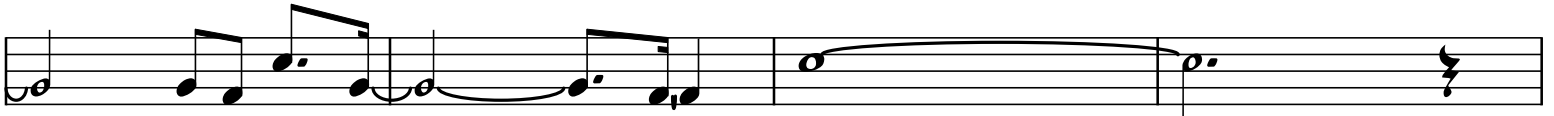


F-9



B \flat 7

E \flat 13



E \flat -7

A \flat 9

A \flat 7(b9)

D \flat -7



F \sharp 9

F \sharp 7(b9)

B-7



B-7

E7(b9)

A-7



F \sharp 87

F9

E7(\sharp 5)(\sharp 9)

A7(\sharp 5)(\sharp 9)



D-9
 378
 G13 C13(b9)
 F-7 Db9(b5)
 G7(#5) C7(#5) F-(Δ7) A7(#5)

The image displays a musical score for a piece titled "INVITATION - Page 2". It consists of four staves of music. The first staff begins with a treble clef and a key signature of one flat (B-flat). The melody starts with a quarter note G4, followed by eighth notes A4, Bb4, and C5, then a half note D5. The second staff continues the melody with a quarter note E5, followed by eighth notes F5, G5, and A5, then a half note B5. The third staff continues with a quarter note C6, followed by eighth notes B5, A5, and G5, then a half note F5. The fourth staff concludes the melody with a quarter note E5, followed by eighth notes D5, C5, and B4, then a half note A4. The score includes several chords: D-9, G13, C13(b9), F-7, Db9(b5), G7(#5), C7(#5), F-(Δ7), and A7(#5). A small number "378" is written below the first staff. The piece ends with a double bar line and a repeat sign.