



Gustav Anderson

United States (USA), Norwalk

MINDLOST SOLO PART

About the artist

A ROSE BY ANY OTHER NAME.....Hello...in order to keep my sheet music separate from my MP3 music on Freescores I, LEONARD ANDERSON, have established this second account...GUSTAV is my middle name....to hear my MP3's click on LEONARD ANDERSON under INTERPRETER

Qualification: BA, MA, Ed.D, Ph.D in music and education

Artist page : <https://www.free-scores.com/Download-PDF-Sheet-Music-gustavanderson.htm>

About the piece



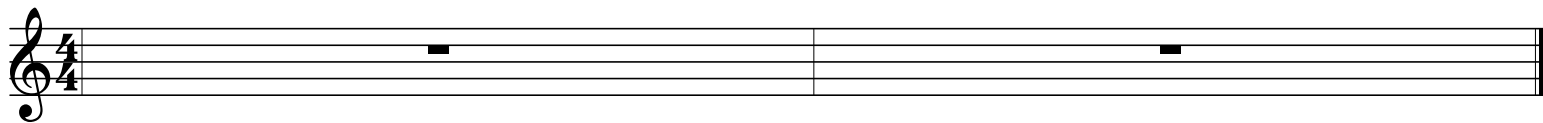
Title: MINDLOST SOLO PART
Composer: Anderson, Gustav
Arranger: Anderson, Gustav
Copyright: Gustav Anderson (c) All Rights Reserved
Publisher: Anderson, Gustav
Instrumentation: Lead sheet
Style: New age - Ambient
Comment: Here are the solo parts as requested

Gustav Anderson on [free-scores.com](https://www.free-scores.com)

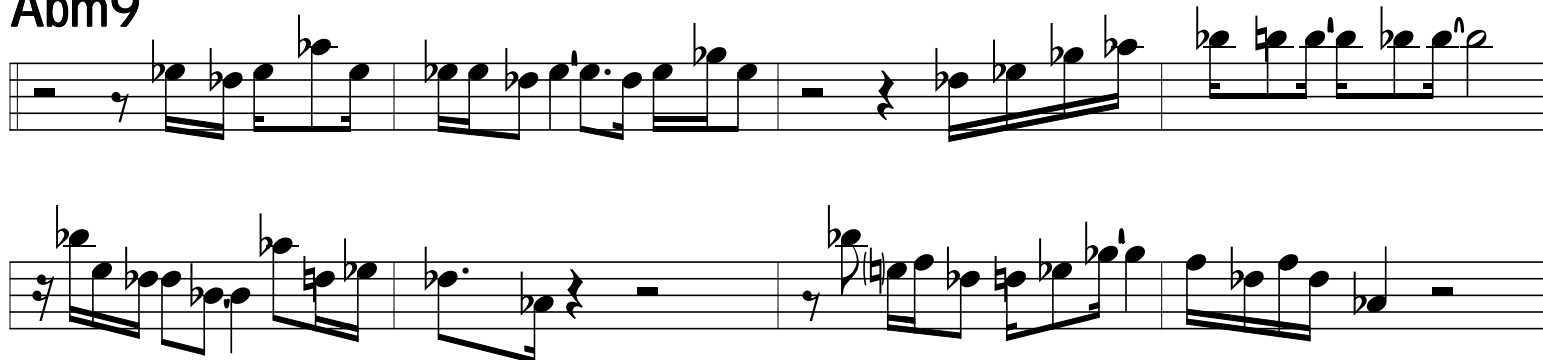


- listen to the audio
- share your interpretation
- comment
- contact the artist

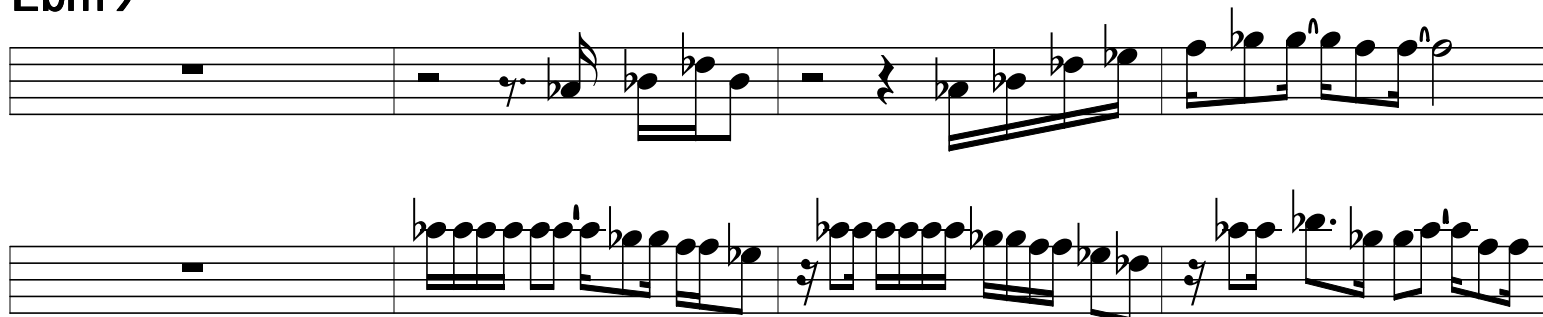
MINDLOST



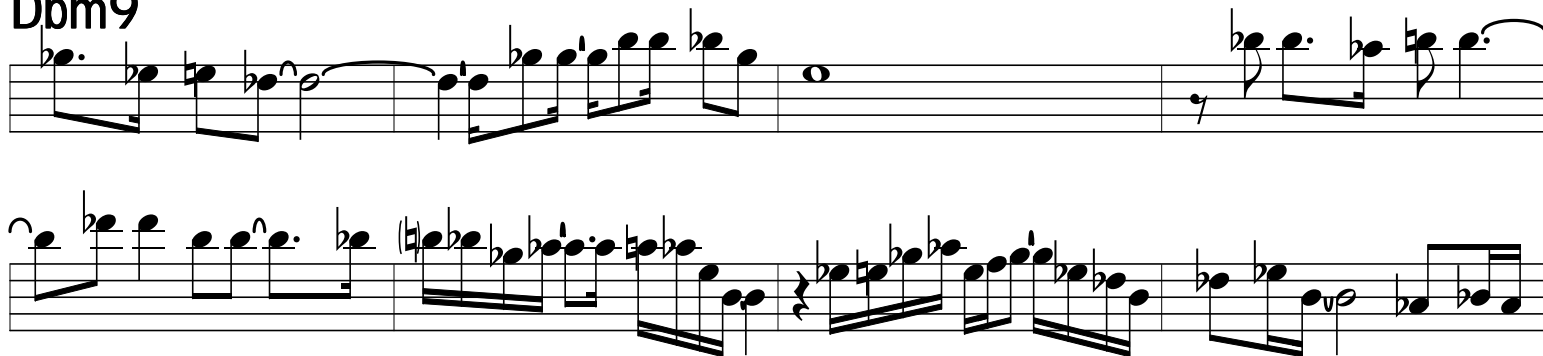
Abm9



Ebm9



Dbm9



Abm9



Abm9

57 Trumpet

Ebm9

Dbm9

Abm9

Abm9

84 Chiff Lead

Ebm9

Two staves of musical notation for the Ebm9 section. The first staff contains a complex melodic line with many beamed notes and slurs. The second staff continues the melody with similar rhythmic patterns.

Dbm9

Two staves of musical notation for the Dbm9 section. The first staff features a melodic line with a prominent dotted quarter note. The second staff continues the melody with various rhythmic values.

Abm9

Two staves of musical notation for the Abm9 section. The first staff shows a melodic line with many beamed notes. The second staff continues the melody and includes a dynamic marking of **f** Acoustic Piano.

Abm9

Two staves of musical notation for the Abm9 section. The first staff features a melodic line with many beamed notes. The second staff continues the melody with various rhythmic values.

Two staves of musical notation for the Ebm9 section. The first staff shows a melodic line with many beamed notes. The second staff continues the melody with various rhythmic values.

Ebm9

Two staves of musical notation for the Ebm9 section. The first staff shows a melodic line with many beamed notes. The second staff continues the melody with various rhythmic values.

Dbm9

Musical staff with treble clef. The key signature has two flats (Bb and Eb). The chord symbol Dbm9 is written above the staff. The music consists of a series of eighth and sixteenth notes, with some rests and a repeat sign.

Musical staff with treble clef. The key signature has two flats (Bb and Eb). The chord symbol Abm9 is written below the staff. The music continues with eighth and sixteenth notes, including a repeat sign.

Musical staff with treble clef. The key signature has two flats (Bb and Eb). The chord symbol Abm9 is written below the staff. The music continues with eighth and sixteenth notes.

Musical staff with treble clef. The key signature has two flats (Bb and Eb). The chord symbol Abm9 is written below the staff. The music continues with eighth and sixteenth notes. A box labeled "82 Saw Wave Lead" is positioned above the staff. The staff below it shows a bass line with eighth notes.

Musical staff with treble clef. The key signature has three flats (Bb, Eb, and Ab). The chord symbol Ebm9 is written below the staff. The music consists of eighth notes.

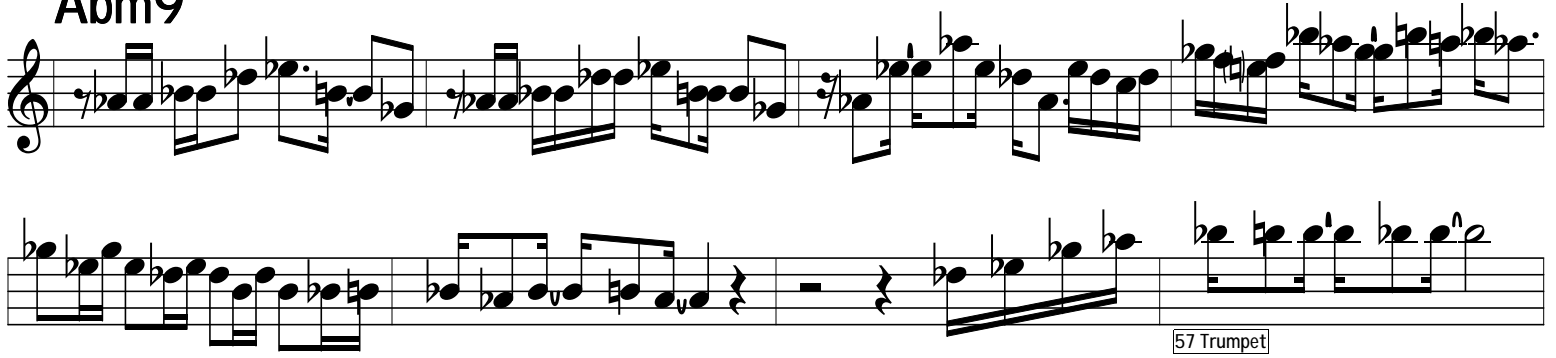
Musical staff with treble clef. The key signature has three flats (Bb, Eb, and Ab). The chord symbol Ebm9 is written below the staff. The music consists of eighth notes.

Musical staff with treble clef. The key signature has three flats (Bb, Eb, and Ab). The chord symbol Ebm9 is written below the staff. The music consists of eighth notes, with a triplet of eighth notes indicated by a bracket and the number 3.

Musical staff with treble clef. The key signature has two flats (Bb and Eb). The chord symbol Dbm9 is written below the staff. The music consists of eighth notes.

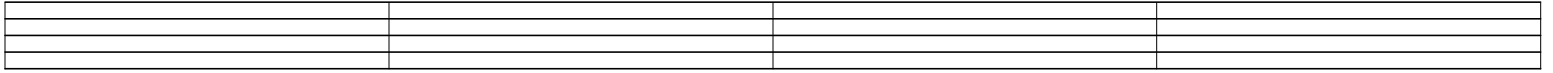
Musical staff with treble clef. The key signature has two flats (Bb and Eb). The chord symbol Dbm9 is written below the staff. The music consists of eighth notes.

Abm9

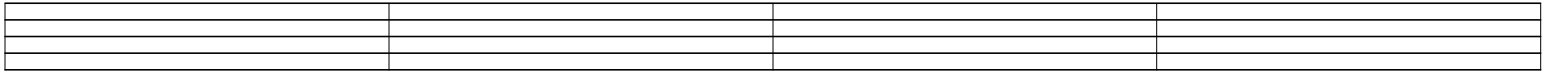


Musical notation for Abm9, featuring a treble clef and a key signature of two flats. The notation consists of two staves of music. The first staff contains a complex melodic line with many beamed notes and slurs. The second staff contains a more rhythmic accompaniment with some rests. A box labeled "57 Trumpet" is located at the end of the second staff.

Abm9

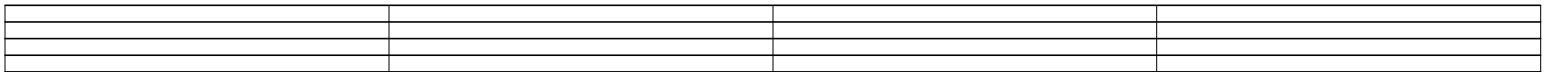


Empty musical staff for Abm9, consisting of five lines.

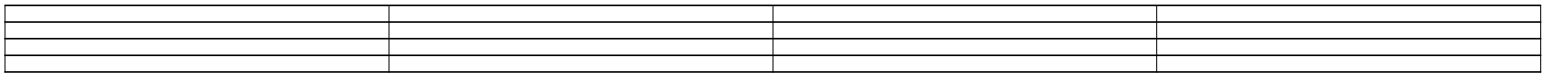


Empty musical staff for Abm9, consisting of five lines.

Ebm9

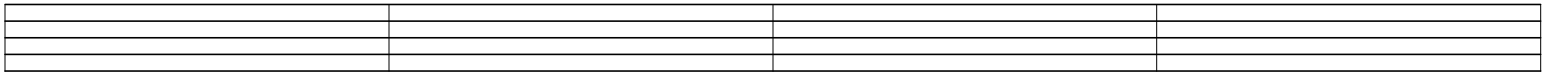


Empty musical staff for Ebm9, consisting of five lines.

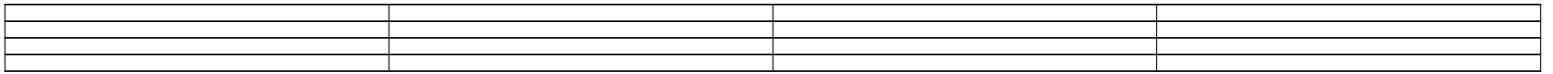


Empty musical staff for Ebm9, consisting of five lines.

Dbm9

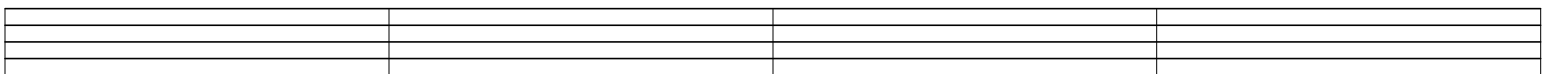


Empty musical staff for Dbm9, consisting of five lines.

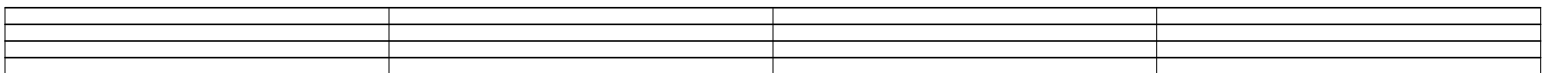


Empty musical staff for Dbm9, consisting of five lines.

Abm9



Empty musical staff for Abm9, consisting of five lines.



Empty musical staff for Abm9, consisting of five lines.

Abm9

