



Soundararajan John Barathi

Arranger, Composer, Publisher, Teacher

About the artist

Coordinator for Church Music & Liturgy
CSI Synod
India

Qualification: Post Graduate in Church Music

Artist page : <http://www.free-scores.com/Download-PDF-Sheet-Music-johnbarathi.htm>

About the piece

Title: Onnumillaymayil [Malayalam]
Composer: Anonymous
Arranger: John Barathi, Soundararajan
Copyright: Copyright © Soundararajan John Barathi
Publisher: John Barathi, Soundararajan
Instrumentation: Voice
Style: Christian

Soundararajan John Barathi on [free-scores.com](http://www.free-scores.com)

LICENSE

This sheet music requires an authorization :

- for public performances
- for use by teachers

Buy this license at :

<http://www.free-scores.com/license?p=aXI06RILQ>



- listen to the audio
- comment
- pay the licence
- contact the artist

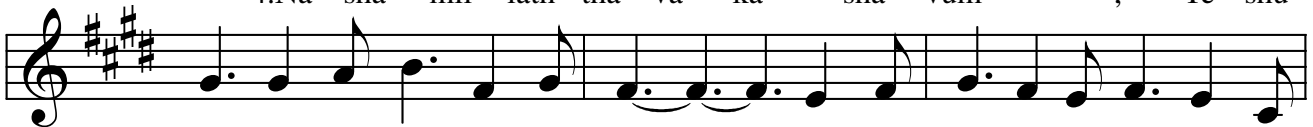
Prohibited distribution on other website.

Words & Music : Anonymous
Music Transcription S. John Barathi

Onnumillaykayil

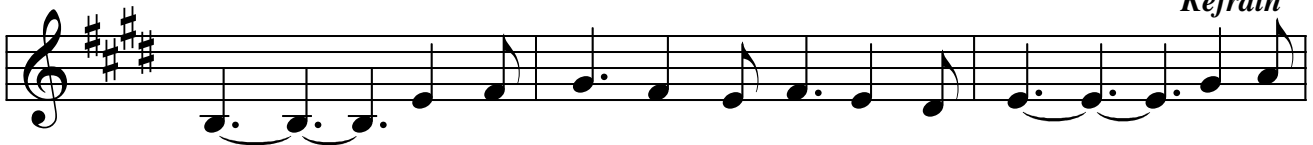


1. On - nu - mil - lay - ka - yil, Nin - nen - nee , Nin - nu -
2. Mo - cha - nam Vee - dum Ja - na - na - vum , Nee - cha
3. An - na Va - stha - dhi Nan - ma - ka - lee , En - na -
4. Na - sha - mil - lath - tha - va - ka - sha - vum , Ye - shu -

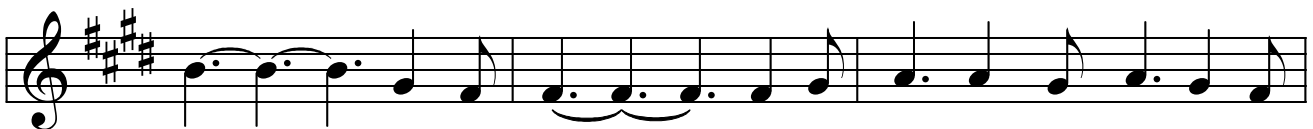


1. de Cha - ya - lil Srush - ti - chu , Nith - ya - may Sne - hi - chi - chen - nen -
2. Pa - pi - yen - nil Va - sip - pan , Nan - nath - ma - vin - te Dha - na - vum
3. mil - la - dhen - meel Cho - rinj - ju , Than - ma - kal Sar - va - thil nin - nan -
4. vin Bhag - ya San - ni - dhi - yum , Nii - dhi - yin Vaa - da - moo - di - ka -

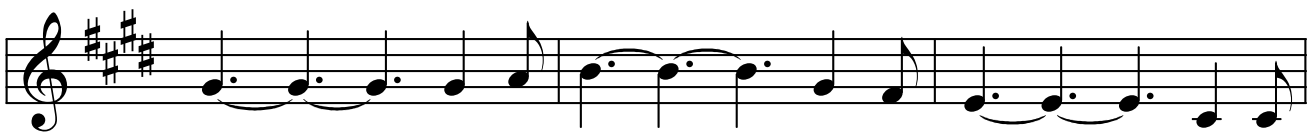
Refrain



1. ne , Puth - re - ne Than - nan - ne Rek - shi - chu Nin Ma -
2. nee , Than - nu Swar - ga - nu - gra - hang - ga - lum
3. nee , Kan - ma - nni - po - le Kaak - kun - nu
4. lum , Than mak - kal - ku Swar - ge La - bhik - kum



ha Kru - pak - kay , Nin - ne Njan Sthu - thich - chee - du - men -



num, , Nin Ma ha Kru - pak -- kay , Nin - ne



Njan Sthu - thi - chee - dum - me - nnum.

CSI sjb Nov 16 2017