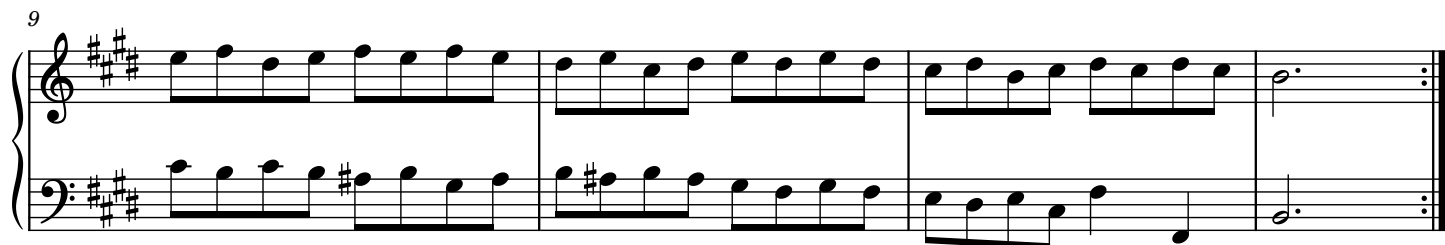


Bourrée

French Suite 6, BWV 817, Mvmt. 7

Johann Sebastian Bach



13



System 1 (Measures 13-16): The music is in A major (three sharps). The right hand starts with a quarter rest, followed by eighth-note runs. The left hand plays a steady eighth-note accompaniment. Measure 16 ends with a repeat sign.

17




System 2 (Measures 17-21): The right hand continues with eighth-note runs. The left hand maintains the eighth-note accompaniment. Measure 21 ends with a repeat sign.

22



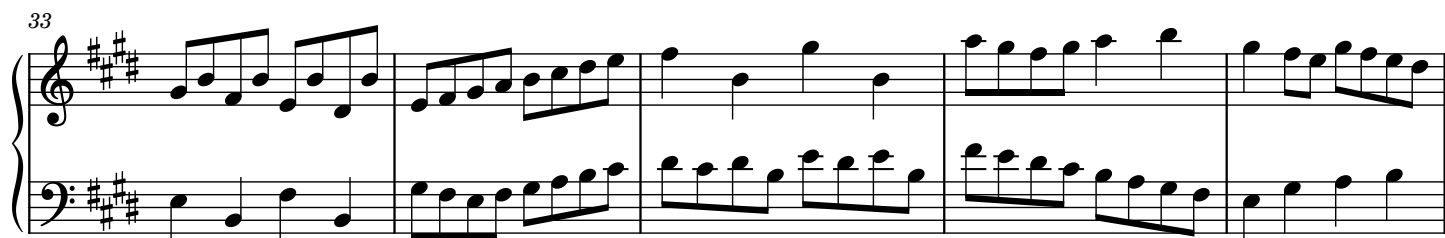
System 3 (Measures 22-27): The right hand features a mix of eighth-note runs and quarter notes. The left hand continues the eighth-note accompaniment. Measure 27 ends with a repeat sign.

28



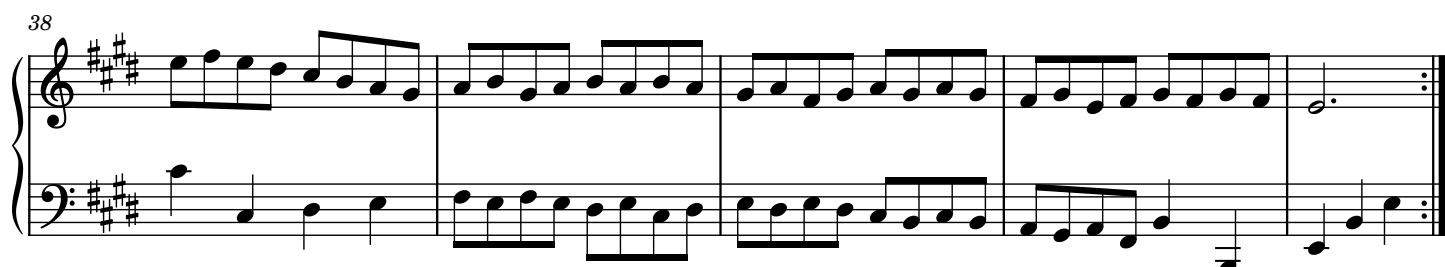
System 4 (Measures 28-32): The right hand plays continuous eighth-note runs. The left hand continues the eighth-note accompaniment. Measure 32 ends with a repeat sign.

33



System 5 (Measures 33-37): The right hand continues with eighth-note runs. The left hand continues the eighth-note accompaniment. Measure 37 ends with a repeat sign.

38



System 6 (Measures 38-42): The right hand continues with eighth-note runs. The left hand continues the eighth-note accompaniment. Measure 42 ends with a double bar line and repeat dots.