

Sonata I BWV 1001

"Sechs Sonaten für Violine"

Johann Sebastian Bach (1685-1750)

2. Fuga

BWV 1001

Violine *Allegro*

4

7

9

11

13

15

18

21

24 Musical staff 24: Treble clef, key signature of one flat (Bb). Measure 24 starts with a triplet of eighth notes (G4, A4, Bb4) marked with a '7' and a trill 'tr' over the Bb4. The staff continues with eighth and sixteenth notes, including another triplet marked with a '7' at the end of the line.

27 Musical staff 27: Treble clef, key signature of one flat (Bb). Measure 27 begins with a triplet of eighth notes marked with a '7'. The staff features a mix of eighth and sixteenth notes with various accidentals.

30 Musical staff 30: Treble clef, key signature of one flat (Bb). Measure 30 starts with a triplet of eighth notes marked with a '7'. The staff contains eighth and sixteenth notes with several sharps and flats.

33 Musical staff 33: Treble clef, key signature of one flat (Bb). Measure 33 begins with a triplet of eighth notes marked with a '7'. The staff continues with eighth and sixteenth notes, including a half note at the end of the line.

36 Musical staff 36: Treble clef, key signature of one flat (Bb). Measure 36 starts with a triplet of eighth notes marked with a '7'. The staff features eighth and sixteenth notes with various accidentals.

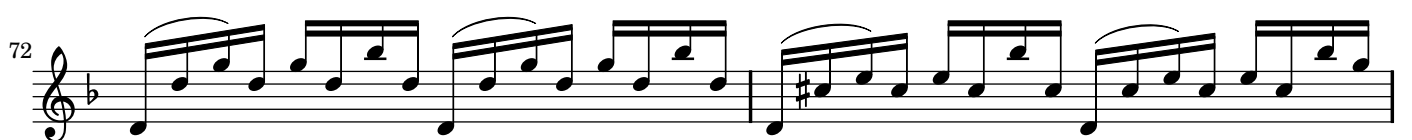
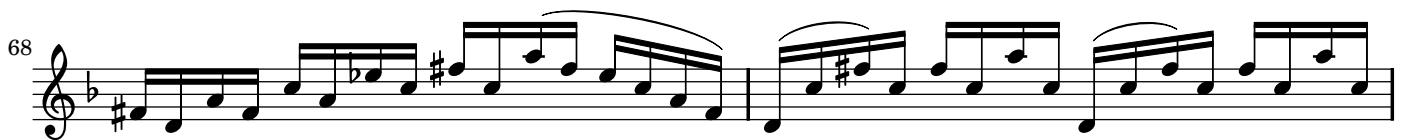
39 Musical staff 39: Treble clef, key signature of one flat (Bb). Measure 39 begins with a triplet of eighth notes marked with a '7'. The staff contains eighth and sixteenth notes with several sharps and flats.

42 Musical staff 42: Treble clef, key signature of one flat (Bb). Measure 42 starts with a triplet of eighth notes marked with a '7'. The staff features eighth and sixteenth notes with various accidentals.

44 Musical staff 44: Treble clef, key signature of one flat (Bb). Measure 44 begins with a triplet of eighth notes marked with a '7'. The staff contains eighth and sixteenth notes with several sharps and flats.

46 Musical staff 46: Treble clef, key signature of one flat (Bb). Measure 46 starts with a triplet of eighth notes marked with a '7'. The staff features eighth and sixteenth notes with various accidentals.

48 Musical staff 48: Treble clef, key signature of one flat (Bb). Measure 48 begins with a triplet of eighth notes marked with a '7'. The staff contains eighth and sixteenth notes with various accidentals.



Sheet music for a piano piece, measures 74-93. The music is written in a single system on a grand staff (treble and bass clefs). The key signature is one flat (B-flat). The time signature is 3/4. The piece features a complex, rhythmic melody with many slurs and ties. The bass line is mostly octaves and chords. The piece ends with a fermata over a final chord.

Sheet music from www.MutopiaProject.org • Free to download, with the freedom to distribute, modify and perform.

Typeset using www.LilyPond.org by Hajo Dezelski. Copyright © 2008. Reference: Mutopia-2008/06/02-1438

Licensed under the Creative Commons Attribution-ShareAlike 3.0 (Unported) License, for details see: <http://creativecommons.org/licenses/by-sa/3.0>