



Mike Magatagan

United States (USA), SierraVista

Chorale: "Durch Adams Fall ist ganz verderbt" for Brass Quartet (BWV 1101)

Bach, Johann Sebastian

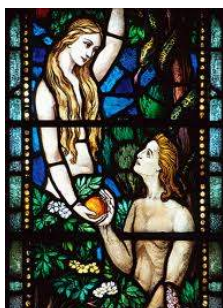
About the artist

I'm a software engineer. Basically, I'm computer geek who loves to solve problems. I have been developing software for the last 25+ years but have recently rekindled my love of music.

Many of my scores are posted with individual parts and matching play-along however, this is not always practical. If you would like individual parts to any of my scores or other specific tailoring, please contact me directly and I will try to accommodate your specific needs.

Artist page : <https://www.free-scores.com/Download-PDF-Sheet-Music-magataganm.htm>

About the piece



| | |
|-------------------------|--|
| Title: | Chorale: "Durch Adams Fall ist ganz verderbt" for Brass Quartet [BWV 1101] |
| Composer: | Bach, Johann Sebastian |
| Arranger: | Magatagan, Mike |
| Copyright: | Public Domain |
| Publisher: | Magatagan, Mike |
| Instrumentation: | Brass Quartet |
| Style: | Baroque |
| Comment: | The Neumeister Collection is a compilation of 82 chorale preludes found in a manuscript copy produced by Johann Gottfried Neumeister (1757–1840). When the manuscript was rediscovered at the Yale University in the 1980s it appeared to contain 31 previously unknown early chorale settings by Johann Sebastian Bach, which were added to the BWV catalogue as Nos. 1090–1120 and published in 1985. This is another of the Bach chorale preludes unearthed in... (more online) |

Mike Magatagan on [free-scores.com](https://www.free-scores.com)



- listen to the audio
- share your interpretation
- comment
- contact the artist



Chorale: "Durch Adams Fall ist ganz verderbt"

J. S. Bach (BWV 1101)

Arranged for Brass Quartet by Mike Magatagan 2017

Chorale (♩ = 90)

Brass Quartet score for measures 1-5. The instruments are B♭ Trumpet, Trombone, Horn in F, and Euphonium. The music is in C major, common time, and begins with a mezzo-forte (*mf*) dynamic. The Euphonium part starts with a rhythmic pattern of eighth notes.

Brass Quartet score for measures 6-9. The instruments are Trumpet (Tr), Trombone (Tb), Flugelhorn (Fh), and Euphonium (Eu). The music continues with the mezzo-forte (*mf*) dynamic. The Trumpet part has a melodic line, while the other instruments provide harmonic support.

Brass Quartet score for measures 10-12. The instruments are Trumpet (Tr), Trombone (Tb), Flugelhorn (Fh), and Euphonium (Eu). The music concludes with a sustained note in the Trumpet part and a final cadence in the other instruments.

13

Tr
Tb
Fh
Eu

16

Tr
Tb
Fh
Eu

19

Tr
Tb
Fh
Eu

22

Tr
Tb
Fh
Eu

This system contains measures 22, 23, and 24. The key signature is one sharp (F#). The parts are: Trumpet (Tr) in G major, playing a simple melodic line; Trombone (Tb) in B-flat major, playing a rhythmic eighth-note pattern; Flute (Fh) in G major, playing a rhythmic eighth-note pattern; and Euphonium (Eu) in B-flat major, playing a rhythmic eighth-note pattern.

25

Tr
Tb
Fh
Eu

This system contains measures 25, 26, and 27. The key signature is one sharp (F#). The parts are: Trumpet (Tr) in G major, playing a simple melodic line; Trombone (Tb) in B-flat major, playing a rhythmic eighth-note pattern; Flute (Fh) in G major, playing a rhythmic eighth-note pattern; and Euphonium (Eu) in B-flat major, playing a rhythmic eighth-note pattern.

28

Tr
Tb
Fh
Eu

This system contains measures 28, 29, and 30. The key signature is one sharp (F#). The parts are: Trumpet (Tr) in G major, playing a simple melodic line; Trombone (Tb) in B-flat major, playing a rhythmic eighth-note pattern; Flute (Fh) in G major, playing a rhythmic eighth-note pattern; and Euphonium (Eu) in B-flat major, playing a rhythmic eighth-note pattern.

31

Tr
Tb
Fh
Eu

This system contains measures 31 through 34. The key signature is one sharp (F#). The parts are: Trumpet (Tr), Trombone (Tb), Flute (Fh), and Euphonium (Eu). Measure 31 shows the Trumpet with a whole rest and the Euphonium with a whole note G2. Measures 32-34 feature more active parts, with the Euphonium playing a descending eighth-note scale in measure 34.

35

Tr
Tb
Fh
Eu

This system contains measures 35 through 38. The key signature is one sharp (F#). The parts are: Trumpet (Tr), Trombone (Tb), Flute (Fh), and Euphonium (Eu). Measure 35 shows the Trumpet with a whole note G3 and the Euphonium with a whole note G2. Measures 36-38 feature more active parts, with the Euphonium playing a descending eighth-note scale in measure 38.

39

Tr
Tb
Fh
Eu

This system contains measures 39 through 42. The key signature is one sharp (F#). The parts are: Trumpet (Tr), Trombone (Tb), Flute (Fh), and Euphonium (Eu). Measure 39 shows the Trumpet with a whole note G3 and the Euphonium with a whole note G2. Measures 40-42 feature more active parts, with the Euphonium playing a descending eighth-note scale in measure 42.

