



Patrice Durand

Fugue en Am BWV 995 (Original en Gm) Bach, Johann Sebastian

About the artist

I offer arrangements and original pieces for solo guitar or small ensembles.
The recordings are not always of good quality but still give an idea.
Thank you for the possible additions of interpretations and / or comments.
Good pick, Patrice

Artist page : <https://www.free-scores.com/Download-PDF-Sheet-Music-patdur21.htm>

About the piece



Title: Fugue en Am BWV 995 [Original en Gm]
Composer: Bach, Johann Sebastian
Arranger: Durand, Patrice
Copyright: Copyright © Patrice Durand
Publisher: Durand, Patrice
Instrumentation: Guitar solo (with tabs)
Style: Baroque

Patrice Durand on [free-scores.com](https://www.free-scores.com)



This work is not Public Domain. You must contact the artist for any use outside the private area.

Prohibited distribution on other website.



- listen to the audio
- share your interpretation
- comment
- contact the artist

fugue en Am

Suite BWV 995 Original en Gm

Music by Johann Sebastian Bach
Révisé par Patrice Durand

♩ = 128

mf

First musical staff with treble clef, key signature of one sharp (F#), and 2/4 time signature. It contains six measures of music with eighth and sixteenth notes.

Second musical staff with treble clef, key signature of one sharp (F#), and 2/4 time signature. It contains six measures of music, including triplets and fingerings (1, 2, 3).

Third musical staff with treble clef, key signature of one sharp (F#), and 2/4 time signature. It contains six measures of music, including a 7/8 time signature change and circled fingerings (0, 1, 2, 3, 4).

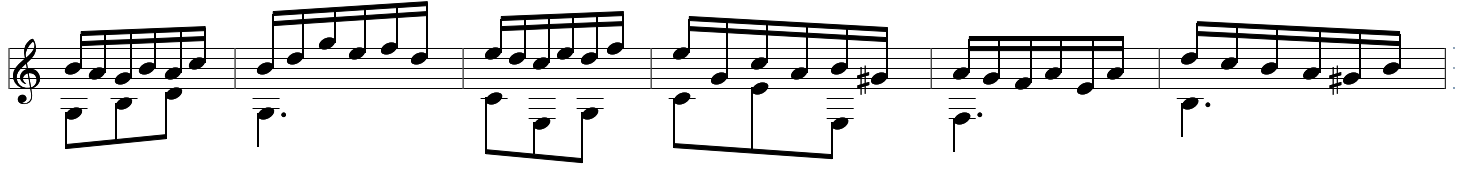
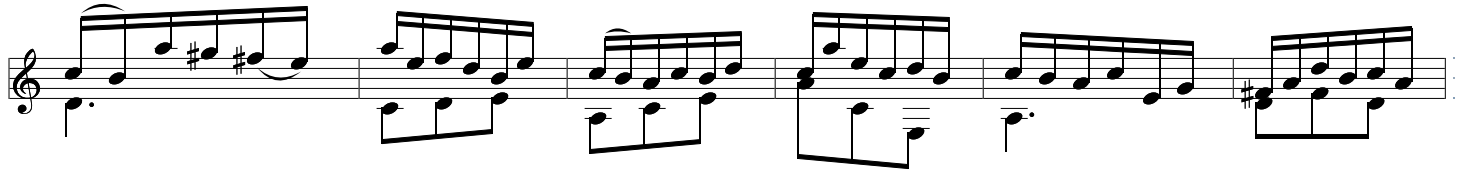
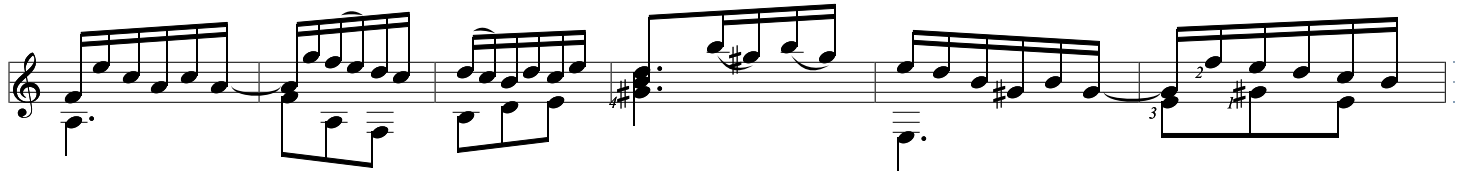
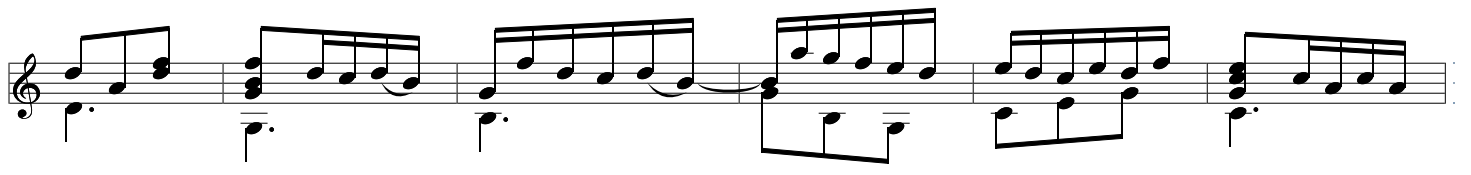
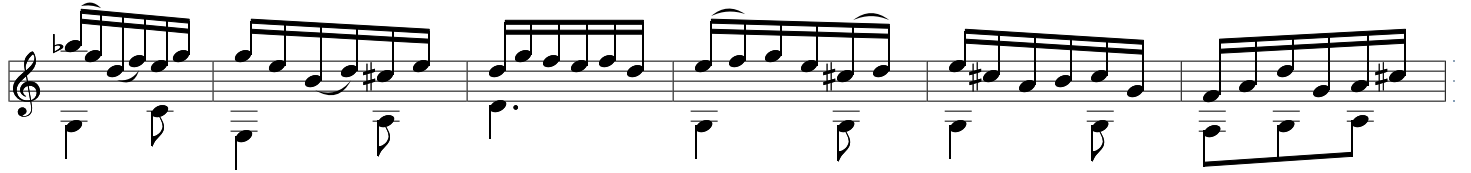
Fourth musical staff with treble clef, key signature of one sharp (F#), and 2/4 time signature. It contains six measures of music with eighth and sixteenth notes.

Fifth musical staff with treble clef, key signature of one sharp (F#), and 2/4 time signature. It contains six measures of music, including a 7/8 time signature change and fingerings (0, 4).

Sixth musical staff with treble clef, key signature of one sharp (F#), and 2/4 time signature. It contains six measures of music with eighth and sixteenth notes.

Seventh musical staff with treble clef, key signature of one sharp (F#), and 2/4 time signature. It contains six measures of music, including a 7/8 time signature change and fingerings (2, 3).

Eighth musical staff with treble clef, key signature of one sharp (F#), and 2/4 time signature. It contains six measures of music with eighth and sixteenth notes.



First musical staff featuring a treble clef and a key signature of one sharp (F#). The melody consists of eighth and sixteenth notes. The bass line includes a triplet of eighth notes, a pair of eighth notes, and a triplet of eighth notes. Fingering numbers 3, 2, and 7 are indicated below the staff.

Second musical staff continuing the melody. It features a trill-like ornament over a note and a slur over a group of notes. The bass line continues with eighth and sixteenth notes.

Third musical staff with a key signature change to two sharps (F# and C#). The melody continues with eighth and sixteenth notes. The bass line includes a triplet of eighth notes.

Fourth musical staff continuing the melody. It features a slur over a group of notes and a pair of eighth notes. The bass line includes a pair of eighth notes and a pair of eighth notes.

Fifth musical staff with a key signature change to one sharp (F#). The melody includes a long note with a slur. The bass line includes a pair of eighth notes and a pair of eighth notes.

Sixth musical staff continuing the melody. It features a slur over a group of notes and a pair of eighth notes. The bass line includes a pair of eighth notes and a pair of eighth notes.

Seventh musical staff with a key signature change to two sharps (F# and C#). The melody continues with eighth and sixteenth notes. The bass line includes a pair of eighth notes and a pair of eighth notes.

Eighth musical staff with a key signature change to one sharp (F#). The melody includes a pair of eighth notes and a pair of eighth notes. The bass line includes a pair of eighth notes and a pair of eighth notes. The staff concludes with a double bar line.