



Paul R Palmer

Arranger, Composer, Interpreter, Publisher

United States (USA), Pittsburgh

About the artist

Paul Palmer is a reclusive classical guitarist from Pittsburgh. He is currently studying with Chad Becks, renowned performer, composer and teacher.

Personal web: <http://mysite.verizon.net/vzevuty6/paulsfreeguitarscores/>

About the piece



Title: WTK Book 2 Fugue 20
Composer: Bach, Johann Sebastian
Arranger: Palmer, Paul R
Licence: Copyright © Palmer, Paul R.
Instrumentation: Guitar solo (standard notation)
Style: Baroque

Paul R Palmer on [free-scores.com](http://www.free-scores.com)

<http://www.free-scores.com/Download-PDF-Sheet-Music-paulrpalmer.htm>

- Contact the artist
- Write feedback comments
- Share your MP3 recording
- Web page and online audio access with QR Code :

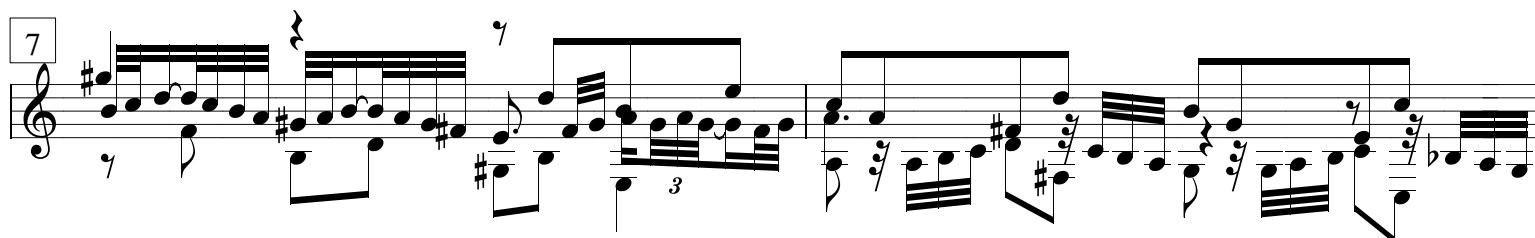
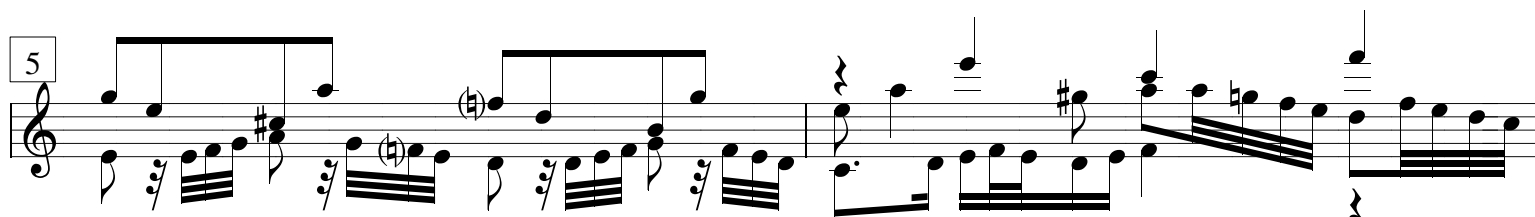
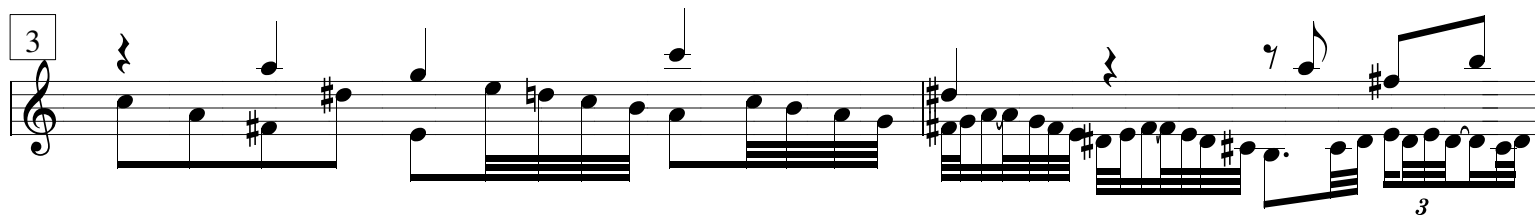


This work is not Public Domain. You must contact the artist for any use outside the private area.

Fugue

from the Well-Tempered Clavier
Book 2, Number 20

J. S. Bach



9

Musical notation for measures 9 and 10. Measure 9 features a treble clef with a melodic line of eighth notes and a bass line of quarter notes. Measure 10 continues the melodic line with a slur over the first half and a fermata over the second half.

11

Musical notation for measures 11 and 12. Measure 11 includes a triplet of eighth notes in the treble clef. Measure 12 features a triplet of eighth notes in the bass clef.

13

Musical notation for measures 13 and 14. Measure 13 shows a treble clef with a melodic line and a bass line. Measure 14 includes a triplet of eighth notes in the treble clef.

15

Musical notation for measures 15 and 16. Measure 15 features a treble clef with a melodic line and a bass line. Measure 16 includes a triplet of eighth notes in the treble clef.

17

Musical notation for measures 17 and 18. Measure 17 features a treble clef with a melodic line and a bass line. Measure 18 includes a triplet of eighth notes in the bass clef.

19

Musical notation for measures 19 and 20. Measure 19 contains a treble clef, a key signature of one sharp (F#), and a 2/4 time signature. The melody consists of eighth and sixteenth notes. Measure 20 features a triplet of eighth notes in the right hand and a triplet of eighth notes in the left hand.

21

Musical notation for measures 21 and 22. Measure 21 includes a treble clef, a key signature of one sharp (F#), and a 2/4 time signature. It features a triplet of eighth notes in the left hand and a melodic line in the right hand. Measure 22 continues the melodic line with a triplet of eighth notes in the left hand.

23

Musical notation for measures 23 and 24. Measure 23 shows a treble clef, a key signature of one sharp (F#), and a 2/4 time signature. The right hand plays a series of chords, while the left hand plays a triplet of eighth notes. Measure 24 continues with chords in the right hand and a triplet of eighth notes in the left hand.

25

Musical notation for measures 25 and 26. Measure 25 features a treble clef, a key signature of one sharp (F#), and a 2/4 time signature. Both hands play a rapid sixteenth-note scale. Measure 26 continues the scale with a triplet of eighth notes in the left hand.

27

Musical notation for measures 27 and 28. Measure 27 includes a treble clef, a key signature of one sharp (F#), and a 2/4 time signature. It features a triplet of eighth notes in the left hand and a melodic line in the right hand. Measure 28 continues with a triplet of eighth notes in the left hand and a melodic line in the right hand.