



Bernard Dewagtere

France, SIN LE NOBLE

Waltz No4 in A Major (6 Valses (Anh 14)) Beethoven, Ludwig van

About the artist

Doctor in musicology, conductor and composer.

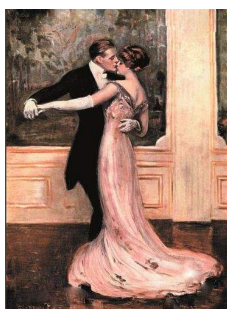
Compositions and arrangements from all eras, in all styles or musical genres and for any instrument or vocal training.

Qualification: PhD Musicology

Associate: SACEM - IPI code of the artist : 342990

Artist page : <https://www.free-scores.com/Download-PDF-Sheet-Music-bernard-dewagtere.htm>

About the piece



Title: Waltz No4 in A Major [6 Valses (Anh 14)]

Composer: Beethoven, Ludwig van

Arranger: Dewagtere, Bernard

Copyright: Copyright © Bernard Dewagtere

Publisher: Dewagtere, Bernard

Instrumentation: String Trio: Violon, Viola, Cello

Style: Romantic

Bernard Dewagtere on [free-scores.com](https://www.free-scores.com)

LICENSE

This sheet music requires an authorization
- for public performances
- for use by teachers

Buy this license at :

<https://www.free-scores.com//license?p=aOtPTsGwz7>



- listen to the audio
- share your interpretation
- comment
- pay the licence
- contact the artist

Prohibited distribution on other website.

6 Valses (Anh 14)

Valse n°4 en La Majeur

Ludwig van Beethoven (1770 – 1827)

Transc. : Bernard Dewagtere

Moderato

Violon

Alto

Violoncelle

p *sf* *sf* *p*

p *sf* *sf* *p*

p *sf* *sf* *p*

Detailed description: This block contains the first three measures of the score for Violon, Alto, and Violoncelle. The Violon part starts with a treble clef, a key signature of two sharps (F# and C#), and a 3/4 time signature. It begins with a piano (*p*) dynamic and a half note G4, followed by a quarter note A4, and a half note B4. A repeat sign follows, with a first ending leading to a half note G4, quarter note A4, and half note B4. The second ending leads to a half note G4, quarter note A4, and half note B4. The Alto part starts with a bass clef and a 3/4 time signature. It begins with a piano (*p*) dynamic and a half note G3, followed by a quarter note A3, and a half note B3. A repeat sign follows, with a first ending leading to a half note G3, quarter note A3, and half note B3. The second ending leads to a half note G3, quarter note A3, and half note B3. The Violoncelle part starts with a bass clef and a 3/4 time signature. It begins with a piano (*p*) dynamic and a half note G2, followed by a quarter note A2, and a half note B2. A repeat sign follows, with a first ending leading to a half note G2, quarter note A2, and half note B2. The second ending leads to a half note G2, quarter note A2, and half note B2. Dynamics include *p*, *sf*, and *sf*.

Vln.

Alt.

Vlc.

sf *sf* *p*

sf *sf* *p*

sf *sf* *p*

Detailed description: This block contains measures 4, 5, and 6 of the score for Violon (Vln.), Alto, and Violoncelle (Vlc.). The Violon part starts with a treble clef, a key signature of two sharps (F# and C#), and a 3/4 time signature. It begins with a piano (*p*) dynamic and a half note G4, followed by a quarter note A4, and a half note B4. A repeat sign follows, with a first ending leading to a half note G4, quarter note A4, and half note B4. The second ending leads to a half note G4, quarter note A4, and half note B4. The Alto part starts with a bass clef and a 3/4 time signature. It begins with a piano (*p*) dynamic and a half note G3, followed by a quarter note A3, and a half note B3. A repeat sign follows, with a first ending leading to a half note G3, quarter note A3, and half note B3. The second ending leads to a half note G3, quarter note A3, and half note B3. The Violoncelle part starts with a bass clef and a 3/4 time signature. It begins with a piano (*p*) dynamic and a half note G2, followed by a quarter note A2, and a half note B2. A repeat sign follows, with a first ending leading to a half note G2, quarter note A2, and half note B2. The second ending leads to a half note G2, quarter note A2, and half note B2. Dynamics include *sf* and *p*.

Vln.

Alt.

Vlc.

p *p*

p *p*

p *p*

Detailed description: This block contains measures 7, 8, and 9 of the score for Violon (Vln.), Alto, and Violoncelle (Vlc.). The Violon part starts with a treble clef, a key signature of two sharps (F# and C#), and a 3/4 time signature. It begins with a piano (*p*) dynamic and a half note G4, followed by a quarter note A4, and a half note B4. A repeat sign follows, with a first ending leading to a half note G4, quarter note A4, and half note B4. The second ending leads to a half note G4, quarter note A4, and half note B4. The Alto part starts with a bass clef and a 3/4 time signature. It begins with a piano (*p*) dynamic and a half note G3, followed by a quarter note A3, and a half note B3. A repeat sign follows, with a first ending leading to a half note G3, quarter note A3, and half note B3. The second ending leads to a half note G3, quarter note A3, and half note B3. The Violoncelle part starts with a bass clef and a 3/4 time signature. It begins with a piano (*p*) dynamic and a half note G2, followed by a quarter note A2, and a half note B2. A repeat sign follows, with a first ending leading to a half note G2, quarter note A2, and half note B2. The second ending leads to a half note G2, quarter note A2, and half note B2. Dynamics include *p* and *Fine*.

6 Vales (Anh 14)

2
12

Vln.

Alt.

Vlc.

sf

sf

sf

16

Vln.

Alt.

Vlc.

sf *p* *sf*

sf *p* *sf*

sf *p* *sf*

20

Vln.

Alt.

Vlc.

1. 2. TRIO

sf *p* *p* *p*

sf *p* *p* *p*

sf *p* *p* *p*

6 Vales (Anh 14)

24

Vln. *p*

Alt. *p*

Vlc. *p*

28

Vln. *p* *mf*

Alt. *p* *mf*

Vlc. *p* *mf*

32

Vln.

Alt.

Vlc.

36

Vln. *poco rit.* *mf* *p* *D.C. al Fine*

Alt. *mf* *p* *D.C. al Fine*

Vlc. *mf* *p* *D.C. al Fine*