



Bernard Dewagtere

France, SIN LE NOBLE

Waltz No1 in Lab (Desire) (6 Valses (Anh 14)) Beethoven, Ludwig van

About the artist

Doctor in musicology, conductor and composer.

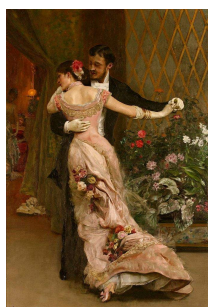
Compositions and arrangements from all eras, in all styles or musical genres and for any instrument or vocal training.

Qualification: PhD Musicology

Associate: SACEM - IPI code of the artist : 342990

Artist page : <https://www.free-scores.com/Download-PDF-Sheet-Music-bernard-dewagtere.htm>

About the piece



Title: Waltz No1 in Lab (Desire) [6 Valses (Anh 14)]

Composer: Beethoven, Ludwig van

Arranger: Dewagtere, Bernard

Copyright: Copyright © Bernard Dewagtere

Publisher: Dewagtere, Bernard

Instrumentation: Recorder (S. or T.), piano (or organ)

Style: Romantic

Bernard Dewagtere on [free-scores.com](https://www.free-scores.com)

LICENSE

This sheet music requires an authorization
- for public performances
- for use by teachers

Buy this license at :

<https://www.free-scores.com//license?p=ao8fjQ01li>



- listen to the audio
- share your interpretation
- comment
- pay the licence
- contact the artist

Prohibited distribution on other website.

6 Valses (Anh. 14)

Valse n°1 en Lab (Le désir)

Ludwig van Beethoven (1770 – 1827)

Transc. : Bernard Dewagtere

Moderato

Flûte à bec Soprano

Flute part: *p e dolce*

Piano part: *p e dolce*

Measures 1-3: Flute and Piano parts. The piano accompaniment features triplet patterns in the right hand and a simple bass line in the left hand.

Fl. à b. S.

Measures 4-7: Bass Flute and Piano parts. The piano accompaniment continues with triplet patterns and includes dynamic markings *cresc.* and *f*.

Fl. à b. S.

Measures 8-11: Bass Flute and Piano parts. The piano accompaniment includes first and second endings for the flute part, marked with *1.* and *2.* and dynamic marking *p*.

6 Valses (Anh. 14)

2
12

Fl. à b. S.

cresc.

cresc.

16

Fl. à b. S.

f *p* *mf*

f *p* *mf*

20

Fl. à b. S.

cresc. *f*

cresc. *f*

Fl. à b. S.

24

cresc.

24

cresc.

Fl. à b. S.

28

ff

ff

dim.

28

Fl. à b. S.

32

p *mf*

1. 2.

32

p *mf*

1. 2.