



Bernard Dewagtere

France, SIN LE NOBLE

L'Arlésienne (Suite n°2) – 6. Intermezzo Bizet, Georges

About the artist

Doctor in musicology, conductor and composer.

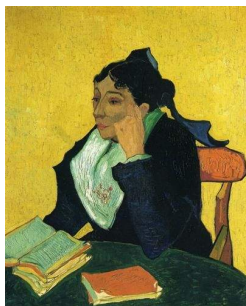
Compositions and arrangements from all eras, in all styles or musical genres and for any instrument or vocal training.

Qualification: PhD Musicology

Associate: SACEM - IPI code of the artist : 342990

Artist page : <https://www.free-scores.com/Download-PDF-Sheet-Music-bernard-dewagtere.htm>

About the piece



Title: L'Arlésienne (Suite n°2) – 6. Intermezzo

Composer: Bizet, Georges

Arranger: Dewagtere, Bernard

Copyright: Copyright © Bernard Dewagtere

Publisher: Dewagtere, Bernard

Instrumentation: Bassoon, Piano

Style: Romantic

Bernard Dewagtere on [free-scores.com](https://www.free-scores.com)

LICENSE

This sheet music requires an authorization
- for public performances
- for use by teachers

Buy this license at :

<https://www.free-scores.com//license?p=atAWmsdys3>



- listen to the audio
- share your interpretation
- comment
- pay the licence
- contact the artist

Prohibited distribution on other website.

L'Arlésienne (Suite n°2)

6. Intermezzo

Georges Bizet (1872)

Transc. : Bernard Dewagtere

Maestoso $\text{♩} = 88$

Basson

Piano

Measures 1-5. Bassoon part is mostly rests. Piano part starts with a melody in the right hand and accompaniment in the left hand. Dynamics include *ff* and *pp*.

Bn.

Piano

Measures 6-10. Bassoon part is mostly rests. Piano part continues the melody and accompaniment. Dynamics include *pp*, *p*, and *ff*.

Bn.

Piano

Measures 11-15. Bassoon part is mostly rests. Piano part continues the melody and accompaniment. Dynamics include *pp* and *p*. A *rit.* marking is present above the piano part.

L'Arlesienne (Suite n°2)

2
16 Allegro moderato

Bn.

mp

sonore

p

Detailed description: This system covers measures 16 to 19. The Bn. part (bass clef) starts with a whole rest in measure 16, then plays a melodic line with a slur over measures 17-19. The piano part (treble and bass clefs) features a rhythmic accompaniment of eighth notes in the right hand and a bass line with eighth notes and rests in the left hand. Dynamics include *mp* and *sonore* for the Bn. part, and *p* for the piano part.

Bn.

20

20

Detailed description: This system covers measures 20 to 23. The Bn. part (bass clef) has a whole rest in measure 20, followed by a melodic line with a slur over measures 21-23. The piano part (treble and bass clefs) continues with the rhythmic accompaniment. Dynamics include *mp* and *sonore* for the Bn. part, and *p* for the piano part.

Bn.

24

mf

f

24

ff

dim. molto

Detailed description: This system covers measures 24 to 27. The Bn. part (bass clef) has a whole rest in measure 24, then plays a melodic line with a slur over measures 25-27. The piano part (treble and bass clefs) continues with the rhythmic accompaniment. Dynamics include *mf* and *f* for the Bn. part, and *ff* and *dim. molto* for the piano part.

L'Arlesienne (Suite n°2)

28

Bn.

3

p *cresc.*

28

3

p *cresc.*

32

Bn.

f *p*

32

f *p*

36

Bn.

sf *p* *sf* *p* *cresc. molto*

36

sf *p* *sf* *p* *cresc. molto*

L'Arlésienne (Suite n°2)

4
40

Bn.

ff *dim.* *p* *cresc. molto*

40

ff *dim.* *p* *cresc. molto*

44

Bn.

rit. molto **1° Tempo**

ff *cresc.* *ff*

44

ff *cresc.* *ff*

49

Bn.

dolce *p*

dolce *p*

49

dolce *pp*

3

54

Bn.

f *p*

58

Bn.

p *dolce* *pp*

62

Bn.

f *ff* *beaucoup plus lent*