



Bernard Dewagtere

France, SIN LE NOBLE

L'Arlésienne (Suite n°2) – 6. Intermezzo Bizet, Georges

About the artist

Doctor in musicology, conductor and composer.

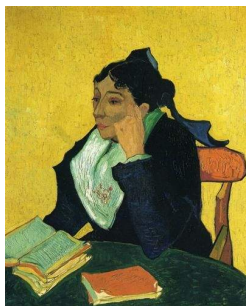
Compositions and arrangements from all eras, in all styles or musical genres and for any instrument or vocal training.

Qualification: PhD Musicology

Associate: SACEM - IPI code of the artist : 342990

Artist page : <https://www.free-scores.com/Download-PDF-Sheet-Music-bernard-dewagtere.htm>

About the piece



Title: L'Arlésienne (Suite n°2) – 6. Intermezzo

Composer: Bizet, Georges

Arranger: Dewagtere, Bernard

Copyright: Copyright © Bernard Dewagtere

Publisher: Dewagtere, Bernard

Instrumentation: Trumpet (Bb) or Bugle or Cornet, piano

Style: Romantic

Bernard Dewagtere on [free-scores.com](https://www.free-scores.com)

LICENSE

This sheet music requires an authorization
- for public performances
- for use by teachers

Buy this license at :

<https://www.free-scores.com//license?p=arjpdR2Fe6>



- listen to the audio
- share your interpretation
- comment
- pay the licence
- contact the artist

Prohibited distribution on other website.

L'Arlésienne (Suite n°2)

6. Intermezzo

Georges Bizet (1872)

Transc. : Bernard Dewagtere

Maestoso ♩ = 88

Trompette en Sib

Musical score for Trompette en Sib and Piano, measures 1-5. The Trompette en Sib part is mostly silent. The Piano part features a melody in the right hand and accompaniment in the left hand. Dynamics include *ff* and *pp*.

Trp. (Sib)

Musical score for Trp. (Sib) and Piano, measures 6-10. The Trp. (Sib) part is mostly silent. The Piano part features a melody in the right hand and accompaniment in the left hand. Dynamics include *pp*, *p*, and *ff*.

Trp. (Sib)

Musical score for Trp. (Sib) and Piano, measures 11-15. The Trp. (Sib) part is mostly silent. The Piano part features a melody in the right hand and accompaniment in the left hand. Dynamics include *pp* and *p*. A *rit.* marking is present above the piano part.

L'Arlésienne (Suite n°2)

Allegro moderato

Trp. (Sib)

2
16

mp

sonore

p

Trp. (Sib)

20

p

mp

Trp. (Sib)

24

mf

f

ff

dim. molto

Trp. (Sib)

28

3

p

cresc.

Trp. (Sib)

32

f

p

f

p

Trp. (Sib)

36

sf < *p* < *sf* < *p* < *cresc. molto*

sf < *p* < *sf* < *p* < *cresc. molto*

L'Arlésienne (Suite n°2)

4
40

Trp. (Sib)

ff *dim.* *p* *cresc. molto*

40

ff *dim.* *p* *cresc. molto*

44

Trp. (Sib)

ff *cresc.* *rit. molto* **1° Tempo** *ff*

44

ff *cresc.* *rit. molto* **1° Tempo** *ff*

49

Trp. (Sib)

dolce *p*

49

dolce *p*

dolce *pp* 3

3

Trp. (Sib)

54

f *p*

This system contains measures 54 to 57. The trumpet part (Sib) begins at measure 54 with a half note G4, followed by a quarter note A4, a quarter note B4, and a quarter note C5. A slur covers the notes from A4 to C5. The piano accompaniment starts with a half note G3, followed by a half note F3. A slur covers the notes from F3 to C4. The piano part features a series of chords and moving lines in both hands, with a dynamic shift from *f* to *p* around measure 56.

Trp. (Sib)

58

p *dolce* *pp*

This system contains measures 58 to 61. The trumpet part (Sib) starts at measure 58 with a quarter note G4, followed by a quarter note A4, a quarter note B4, and a quarter note C5. A slur covers the notes from A4 to C5. The piano accompaniment begins with a half note G3, followed by a half note F3. A slur covers the notes from F3 to C4. The piano part features a series of chords and moving lines in both hands, with a dynamic shift from *p* to *pp* around measure 60. The tempo marking *dolce* is present.

Trp. (Sib)

62

f *ff* *beaucoup plus lent*

This system contains measures 62 to 65. The trumpet part (Sib) starts at measure 62 with a half note G4, followed by a half note A4, a half note B4, and a half note C5. A slur covers the notes from A4 to C5. The piano accompaniment begins with a half note G3, followed by a half note F3. A slur covers the notes from F3 to C4. The piano part features a series of chords and moving lines in both hands, with a dynamic shift from *f* to *ff* around measure 63. The tempo marking *beaucoup plus lent* is present.