



Bernard Dewagtere

France, SIN LE NOBLE

L'Arlésienne (Suite n°2) – 7. Menuet Bizet, Georges

About the artist

Doctor in musicology, conductor and composer.

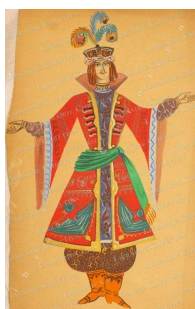
Compositions and arrangements from all eras, in all styles or musical genres and for any instrument or vocal training.

Qualification: PhD Musicology

Associate: SACEM - IPI code of the artist : 342990

Artist page : <https://www.free-scores.com/Download-PDF-Sheet-Music-bernard-dewagtere.htm>

About the piece



Title: L'Arlésienne (Suite n°2) – 7. Menuet

Composer: Bizet, Georges

Arranger: Dewagtere, Bernard

Copyright: Copyright © Bernard Dewagtere

Publisher: Dewagtere, Bernard

Instrumentation: Clarinet, Piano

Style: Romantic

Bernard Dewagtere on [free-scores.com](https://www.free-scores.com)

LICENSE

This sheet music requires an authorization
- for public performances
- for use by teachers

Buy this license at :

<https://www.free-scores.com//license?p=ax4tmcMWvZ>



- listen to the audio
- share your interpretation
- comment
- pay the licence
- contact the artist

Prohibited distribution on other website.

L'Arlésienne (Suite n°2)

7. Menuet

Georges Bizet (1872)

Transc. : Bernard Dewagtere

Andantino quasi Allegretto ♩ = 74

Clarinete en Sib

Clarinet in Bb part: Treble clef, 3/4 time signature. Measures 1-5. The melody begins in measure 3 with a quarter note G4, followed by eighth notes A4, Bb4, C5, D5, E5, F5, G5. Measure 4 has a quarter rest, then a quarter note G5. Measure 5 has a quarter note F5, followed by eighth notes E5, D5, C5, Bb4, A4. The word *dolce* is written below the staff.

Piano part: Grand staff, 3/4 time signature. Measures 1-5. The bass line consists of a steady eighth-note accompaniment: G2, A2, Bb2, C3, D3, E3, F3, G3.

Cl. (Sib)

Clarinet in Bb part: Treble clef, 3/4 time signature. Measures 6-11. Measure 6 starts with a quarter note G4, followed by eighth notes A4, Bb4, C5, D5, E5, F5, G5. Measure 7 has a quarter note G5. Measure 8 has a quarter note F5, followed by eighth notes E5, D5, C5, Bb4, A4. Measure 9 has a quarter note G4, followed by eighth notes A4, Bb4, C5, D5, E5, F5, G5. Measure 10 has a quarter note G5. Measure 11 has a quarter note F5, followed by eighth notes E5, D5, C5, Bb4, A4. Dynamics *pp* and *p* are indicated.

Piano part: Grand staff, 3/4 time signature. Measures 6-11. The bass line continues with the eighth-note accompaniment. Dynamics *pp* and *p* are indicated.

Cl. (Sib)

Clarinet in Bb part: Treble clef, 3/4 time signature. Measures 12-15. Measure 12 starts with a quarter note G4, followed by eighth notes A4, Bb4, C5, D5, E5, F5, G5. Measure 13 has a quarter note G5. Measure 14 has a quarter note F5, followed by eighth notes E5, D5, C5, Bb4, A4. Measure 15 has a quarter note G4, followed by eighth notes A4, Bb4, C5, D5, E5, F5, G5. A crescendo hairpin is shown.

Piano part: Grand staff, 3/4 time signature. Measures 12-15. The bass line continues with the eighth-note accompaniment. A crescendo hairpin is shown.

L'Arlésienne (Suite n°2)

Cl. (Sib) ²₁₇

più f

17

più f

Cl. (Sib) ²²

cres - - cen - - do sf

22

cres - - cen - - do sf

Cl. (Sib) ²⁷

p più f

27

p più f

Cl. (Sib) ³²

poco sf p

32

poco sf p

Cl. (Sib)

36

Cl. (Sib)

40

Cl. (Sib)

44

Cl. (Sib)

48

L'Arlésienne (Suite n°2)

4
52

Cl. (Sib)

56

Cl. (Sib)

60

Cl. (Sib)

64

Cl. (Sib)

Cl. (Sib)

68

Cl. (Sib)

72

più f

Cl. (Sib)

76

poco sf *p*

Cl. (Sib)

80

L'Arlésienne (Suite n°2)

Cl. (Sib)

6
84

f *pp dolcissimo*

Cl. (Sib)

88

f *pp dolcissimo*

Cl. (Sib)

91

p *pp*

smor - - zan - - do

Cl. (Sib)

94

p *pp*